

WAAS CH <b>61299</b> <b>W28A</b>	APP CRS <b>275°</b>	Rwy Idg TDZE <b>998</b> Apt Elev <b>1026</b>	<b>9000</b>
--	------------------------	--	-------------

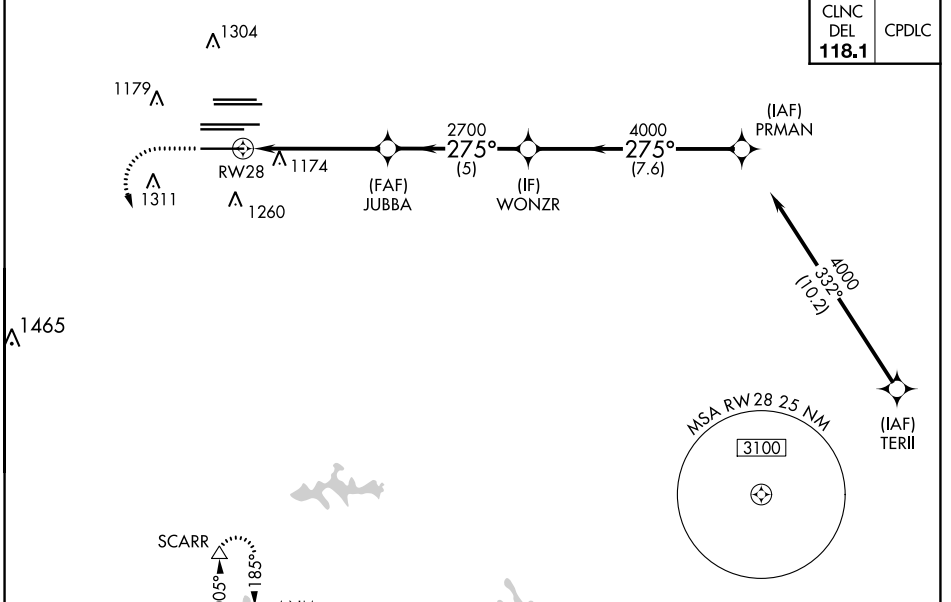
# RNAV (GPS) Y RWY 28

HARTSFIELD-JACKSON ATLANTA INTL (ATL)

▼ For uncompensated Baro-VNAV systems, LNAV/VNAV NA below -7°C (20°F) or above 54°C (130°F). Simultaneous approach authorized with Rwy 26R or 26L or 27R, or Rwys 26R and 27R. DME/DME RNP-0.3 NA. LNAV procedure NA during simultaneous operations. Use of FD or AP providing RNAV track guidance required during simultaneous operations.

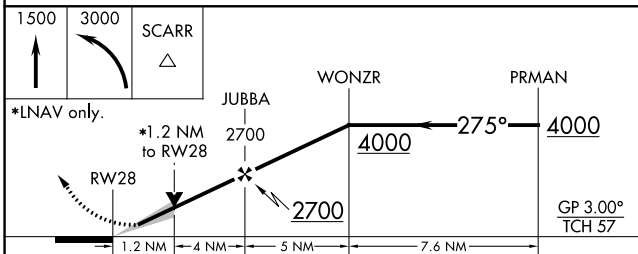
ALSIF-2  
 MISSED APPROACH: Climb to 1500 then climbing left turn to 3000 direct SCARR and hold.

D-ATIS ARR <b>119.65</b>	ATLANTA APP CON <b>127.9 379.9</b>	ATLANTA TOWER 8L-26R 8R-26L 9L-27R 9R-27L 10-28 RWYS				ALL RWYS <b>121.9</b>	GND CON (8L-26R,8R-26L) (9L-27R,9R-27L) 10-28	ALL RWYS <b>254.4</b>
DEP <b>125.55</b>	<b>127.9 379.9</b>	<b>119.1 125.325</b>	<b>123.85</b>	<b>119.3 119.5</b>	<b>254.4</b>	<b>121.9</b>	<b>121.75 121.65</b>	<b>254.4</b>

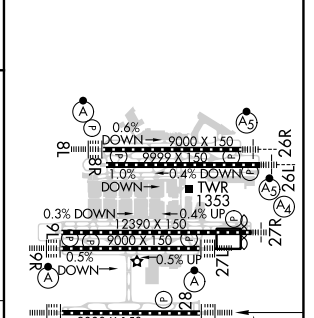


CINC DEL <b>118.1</b>	CPDLC
-----------------------------	-------

**RADAR REQUIRED**



ELEV 1026	<b>D</b>	TDZE 998
-----------	----------	----------



CATEGORY	A	B	C	D
LPV DA		1198/18	200 (200-½)	
LNAV/VNAV DA		1250/24	252 (300-½)	
LNAV MDA	1440/24	442 (500-½)	1440/45	442 (500-¾)

HIRL all Rwys  
 TDZ/CL Rwys 8L, 9R, 10, 26R,  
 27L and 28