

ILS PRM RWY 9R (SA CAT I) (CLOSE PARALLEL)

HARTSFIELD-JACKSON ATLANTA INTL (ATL)

| | | |
|---|------------------------|---|
| LOC/DME I-FUN 108.9 Chan 26 | APP CRS 095° | Rwy Idg 9000 TDZE 1026 Apt Elev 1026 |
|---|------------------------|---|

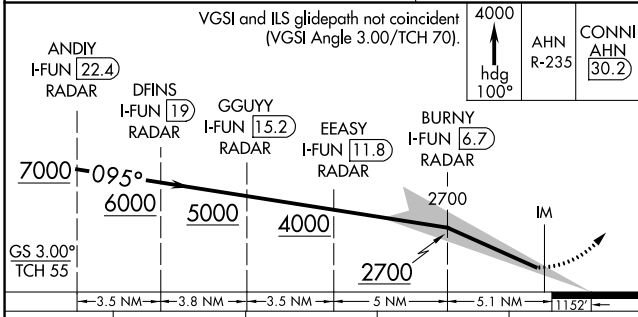
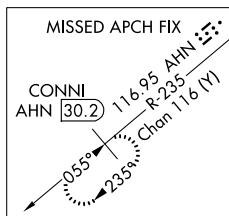
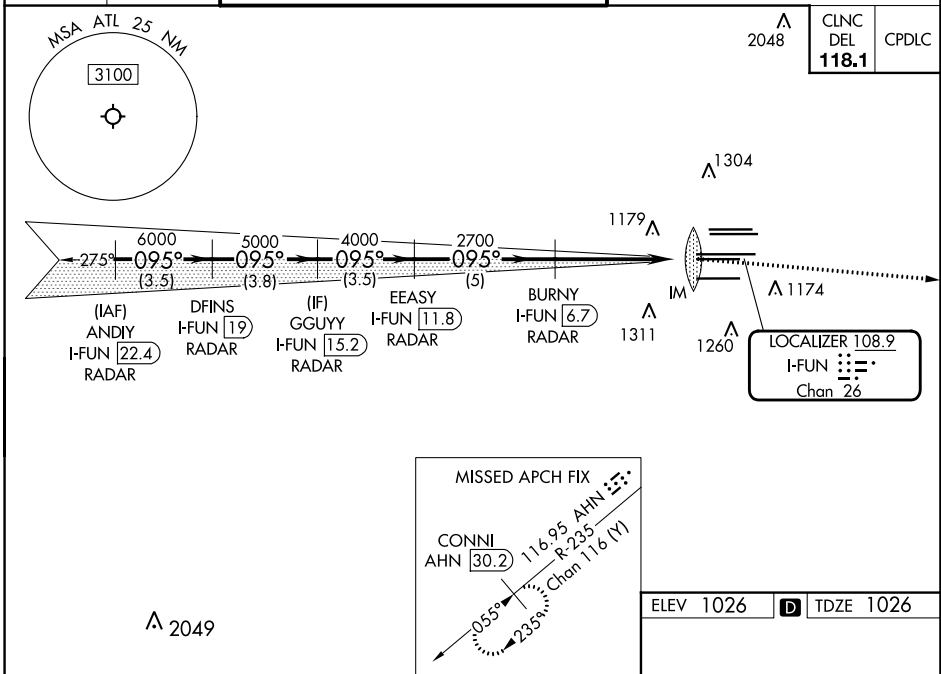
RADAR required for procedure entry, DME.

Requires specific OPSPEC, MSPEC, or LOA approval. Simultaneous approach authorized. Use of FD or AP required during simultaneous operations. Dual VHF comm required. See additional requirements on AAUP.

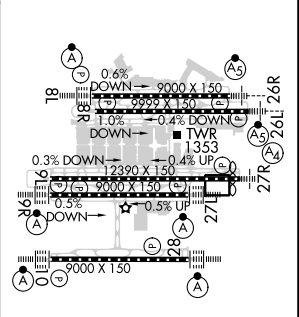
ALSF-2
MISSED APPROACH: Climb to 4000 on heading 100° and AHN VOR/DME R-235 to CONNI/AHN 30.2 DME and hold.

| | | | |
|--|---------------------------------------|---|--|
| D-ATIS ARR 119.65 DEP 125.55 | ATLANTA APP CON 127.9 379.9 | ATLANTA TOWER 8L-26R 8R-26L 9L-27R 9R-27L 10-28 RWYS 119.1 125.325 123.85 119.3 119.5 254.4 PRM 132.55 | ALL RWYS 121.9 121.75 121.65 254.4 |
|--|---------------------------------------|---|--|

| |
|---|
| GND CON (8L-26R,8R-26L) (9L-27R,9R-27L) 10-28 RWYS 121.9 121.75 121.65 254.4 |
|---|



| | |
|-----------|-----------|
| ELEV 1026 | TDZE 1026 |
|-----------|-----------|



SA CATEGORY I ILS - SPECIAL AIRCREW & AIRCRAFT CERTIFICATION REQUIRED

RA 196/14 150 DA 1176

HIRL all Rwws
TDZ/CL Rwws 8L, 9R, 10, 26R, 27L and 28

SE-4, 22 FEB 2024 to 21 MAR 2024

SE-4, 22 FEB 2024 to 21 MAR 2024