

ATLANTA, GEORGIA

AL-26 (FAA)

23334

# ILS PRM RWY 28 (CAT II) (CLOSE PARALLEL)

## HARTSFIELD-JACKSON ATLANTA INTL (ATL)

|   |                        |   |
|---|------------------------|---|
| LOC/DME I-PKU<br><b>111.75</b><br>Chan <b>54(Y)</b> | APP CRS<br><b>275°</b> | Rwy ldg<br><b>9000</b><br>TDZE<br><b>998</b><br>Apt Elev<br><b>1026</b> |
|---|------------------------|---|

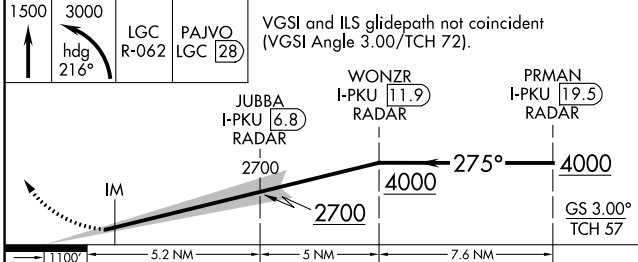
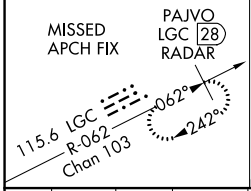
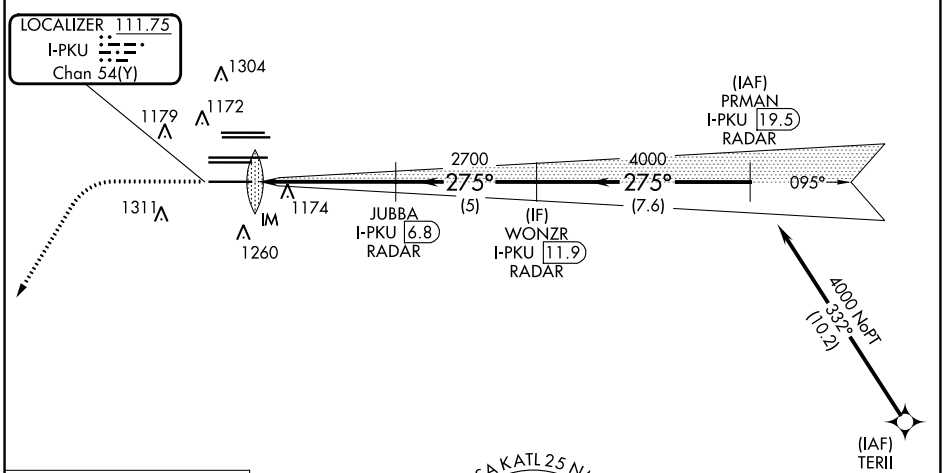
RNAV 1-GPS or RADAR required for procedure entry.  
From TERII: RNAV 1-GPS required. DME or RADAR required.

|            |   |
|------------|---|
| ALSF-2<br> | MISSED APPROACH: Climb to 1500 then climbing left turn to 3000 on heading 216° and LGC VORTAC R-062 to PAJVO/LGC 28 DME/RADAR and hold. |
|------------|---|

Simultaneous approach authorized. Use of FD or AP required during simultaneous operations. Dual VHF comm required. See additional requirements on AAUP.

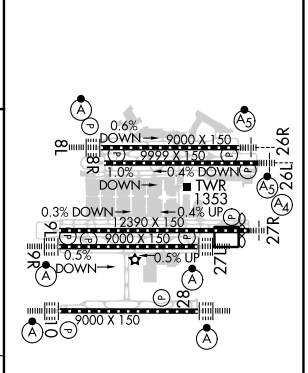
|  |                                       |  |  |   |
|--|---------------------------------------|--|--|---|
| D-ATIS<br>ARR <b>119.65</b><br>DEP <b>125.55</b> | ATLANTA APP CON<br><b>127.9 379.9</b> | ATLANTA TOWER<br>8L-26R 8R-26L 9L-27R 9R-27L 10-28 RWYS<br><b>119.1 125.325 123.85 119.3 119.5 254.4</b><br>PRM <b>133.425</b> | ALL RWYS<br>(8L-26R,8R-26L) (9L-27R,9R-27L) 10-28 RWYS<br><b>121.9 121.75 121.65 254.4</b> | GND CON<br><b>121.9 121.75 121.65 254.4</b> |
|--|---------------------------------------|--|--|---|

|                          |       |
|--------------------------|-------|
| CLNC DEL<br><b>118.1</b> | CPDLC |
|--------------------------|-------|



|                   |                    |                  |                |   |
|-------------------|--------------------|------------------|----------------|---|
| 1500              | 3000               | LGC R-062        | PAJVO LGC [28] | VGSi and ILS glidepath not coincident (VGSi Angle 3.00/TCH 72). |
| hdg 216°          |                    |                  |                |   |
| JUBBA I-PKU [6.8] | WONZR I-PKU [11.9] | PRM I-PKU [19.5] |                |   |
| IM                | 2700               | 4000             | 4000           | GS 3.00° TCH 57   |
| 1100'             | 5.2 NM             | 5 NM             | 7.6 NM         |   |
| CATEGORY          | A                  | B                | C              | D   |
| S-ILS 28          | RA 188/12          |                  | 100 DA 1098    |   |

|           |          |
|-----------|----------|
| ELEV 1026 | TDZE 998 |
|-----------|----------|



HIRL all Rwys  
TDZ/CL Rwys 8L, 9R,  
10, 26R, 27L and 28

SE-4, 22 FEB 2024 to 21 MAR 2024

SE-4, 22 FEB 2024 to 21 MAR 2024

ATLANTA, GEORGIA  
Amdt 5 07OCT21

33°38'N-84°26'W

HARTSFIELD-JACKSON ATLANTA INTL (ATL)

# ILS PRM RWY 28 (CAT II) (CLOSE PARALLEL)