

ATLANTA, GEORGIA

AL-26 (FAA)

23334

LOC/DME I-OMO <b>111.55</b> Chan <b>52 (Y)</b>	APP CRS <b>095°</b>	Rwy Idg <b>9000</b> TDZE <b>1000</b> Apt Elev <b>1026</b>
--	------------------------	---

# ILS PRM RWY 10 (CAT II & III)

(CLOSE PARALLEL)  
HARTSFIELD-JACKSON ATLANTA INTL (ATL)

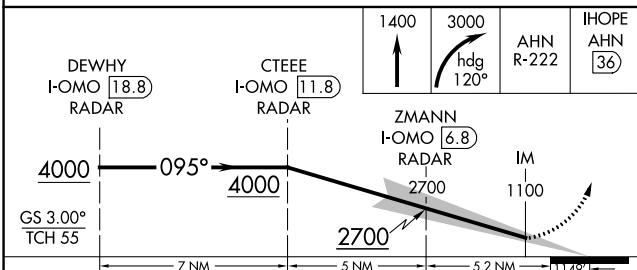
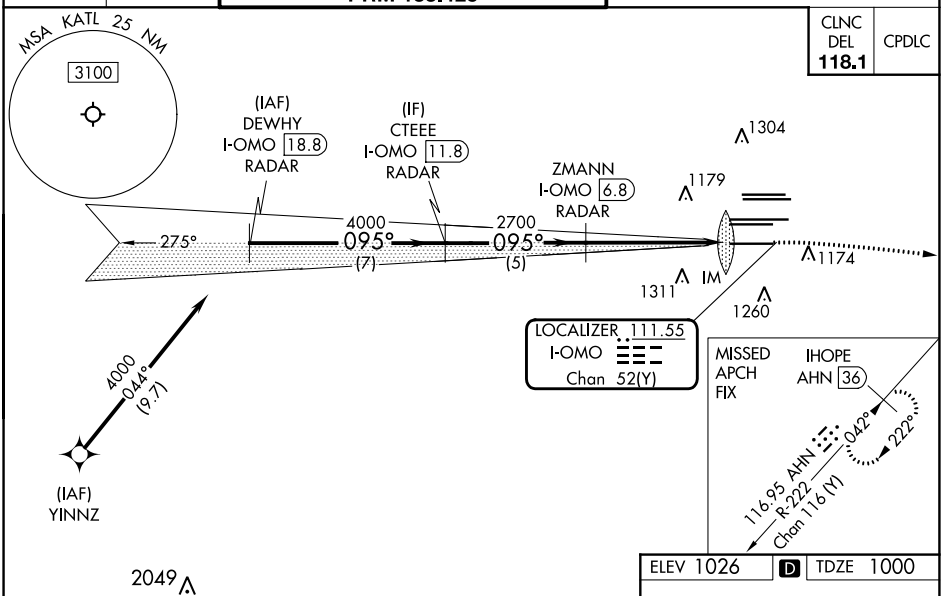
DME or RADAR required.  
RNP APCH - GPS from YINNZ.

Simultaneous approach authorized. Procedure NA when glide slope not available (ILS procedures only). Dual VHF Comm required. See additional requirements on AAPP.

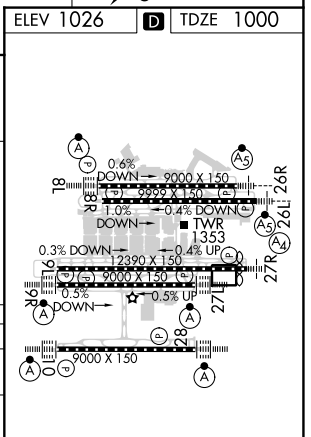
ALSF-2

MISSED APPROACH: Climb to 1400 then climbing right turn to 3000 on heading 120° and AHN R-222 to IHOPE/AHN 36 DME and hold.

D-ATIS ARR <b>119.65</b> DEP <b>125.55</b>	ATLANTA APP CON <b>127.9 379.9</b>	ATLANTA TOWER 8L-26R 8R-26L 9L-27R 9R-27L 10-28 RWYS <b>119.1 125.325 123.85 119.3 119.5 254.4</b> <b>PRM 133.425</b>	ALL RWYS <b>121.9 121.75 121.65 254.4</b>	GND CON (8L-26R,8R-26L) (9L-27R,9R-27L) 10-28 RWYS
--	--	--	---	---



CATEGORY	A	B	C	D
S-ILS 10	CAT II RA 110/12 100 DA 1100			
S-ILS 10	CAT III RVR 07			



**CATEGORY II & III ILS - SPECIAL AIRCREW & AIRCRAFT CERTIFICATION REQUIRED**

HIRL all Rwys  
TDZ/CL Rwys 8L, 9R, 10, 26R, 27L and 28

SE-4, 22 FEB 2024 to 21 MAR 2024

SE-4, 22 FEB 2024 to 21 MAR 2024

ATLANTA, GEORGIA  
Amdt 5 30DEC21

33°38'N-84°26'W HARTSFIELD-JACKSON ATLANTA INTL (ATL)  
**ILS PRM RWY 10 (CAT II & III) (CLOSE PARALLEL)**