

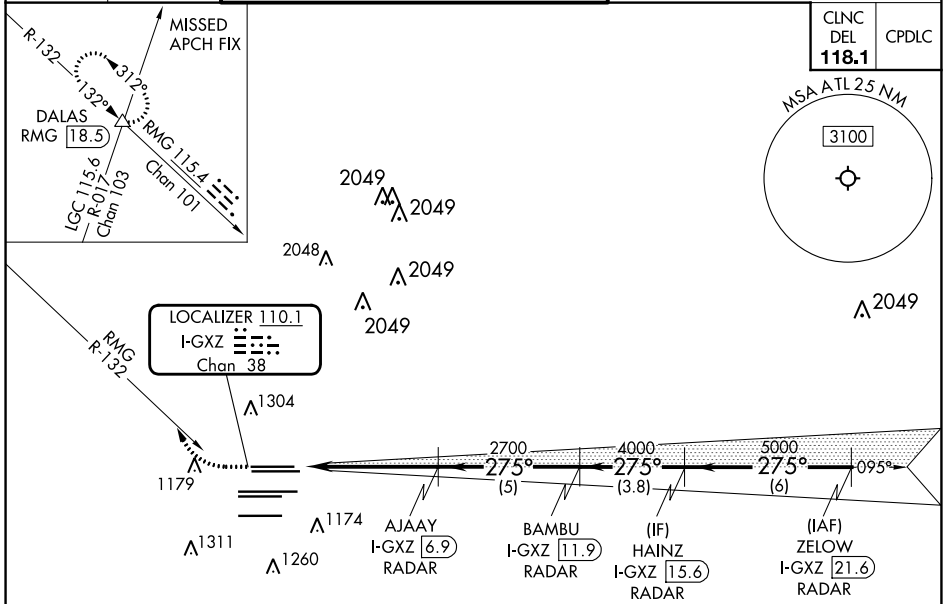
LOC/DME I-GXZ <b>110.1</b> Chan <b>38</b>	APP CRS <b>275°</b>	Rwy Idg TDZE Apt Elev	26R <b>8500</b> <b>990</b> <b>1026</b>	26L <b>9999</b> <b>996</b> <b>1026</b>
---	------------------------	-----------------------------	---	---

# ILS or LOC RWY 26R

HARTSFIELD-JACKSON ATLANTA INTL (ATL)

RADAR required.		Rwy 26R MALSR	Rwy 26L MALSR	MISSED APPROACH: Climb to 1800 then climbing right turn to 4000 on RMG VORTAC R-132 to DALAS INT/RMG 18.5 DME and hold.
Simultaneous approach authorized. For inop ALS, increase sidestep Rwy 26L Cats A and B visibility 1/4 SM.				

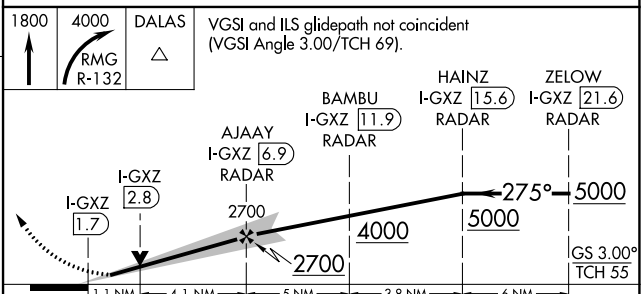
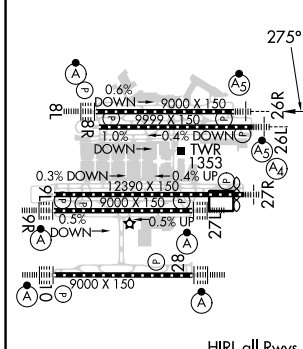
D-ATIS ARR <b>119.65</b>	ATLANTA APP CON DEP <b>127.9 379.9</b>	ATLANTA TOWER 8L-26R 8R-26L 9L-27R 9R-27L 10-28 RWYS				ALL RWYS (8L-26R, 8R-26L) (9L-27R, 9R-27L) 10-28 RWYS	GND CON 10-28 <b>121.75</b>	ALL RWYS <b>121.65 254.4</b>
DEP <b>125.55</b>	<b>127.9 379.9</b>	<b>119.1 125.325 123.85 119.3 119.5 254.4</b>	<b>121.9</b>	<b>121.75</b>	<b>121.65</b>	<b>254.4</b>		



SE-4, 22 FEB 2024 to 21 MAR 2024

SE-4, 22 FEB 2024 to 21 MAR 2024

ELEV 1026	<b>D</b>	TDZE 26R 990
		TDZE 26L 996



HIRL all Rwy's TDZ/CL Rwy's 8L, 9R, 10, 26R, 27L and 28					
FAF to MAP 5.2 NM					
Knots	60	90	120	150	180
Min:Sec	5:12	3:28	2:36	2:05	1:44
CATEGORY	A		B		C
S-ILS 26R	1190/18		200 (200-1/2)		D
S-LOC 26R	1420/24	430 (400-1/2)	1420/40		430 (400-3/4)
SIDESTEP 26L	1420/55	424 (400-1)	1420-1/4	1420-1/4	424 (400-1/4)