

LOC/DME I-OMO <b>111.55</b> Chan <b>52 (Y)</b>	APP CRS <b>095°</b>	Rwy ldg <b>9000</b> TDZE <b>1000</b> Apt Elev <b>1026</b>
--	------------------------	---

# ILS RWY 10 (CAT II & III)

HARTSFIELD-JACKSON ATLANTA INTL (ATL)

DME or RADAR required. RNP APCH - GPS from YINNZ.

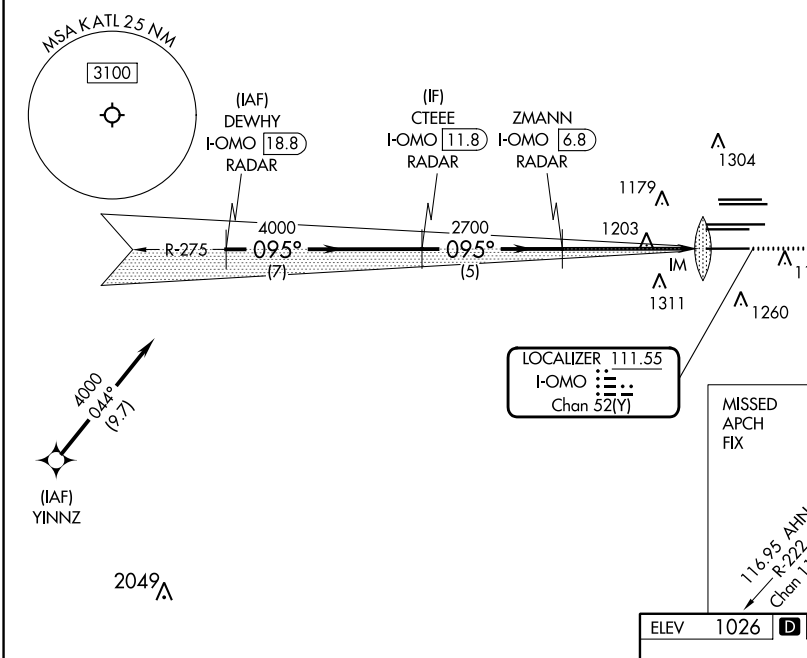
Simultaneous approach authorized with Rwy 9L or 8R or 8L, or Rwy's 9L and 8L.

ALSF-2

MISSED APPROACH: Climb to 1400 then climbing right turn to 3000 on heading 120° and AHN R-222 to IHOPE/AHN 36 DME and hold.

D-ATIS ARR <b>119.65</b> DEP <b>125.55</b>	ATLANTA APP CON <b>127.9 379.9</b>	ATLANTA TOWER 8L-26R 8R-26L 9L-27R 9R-27L 10-28 RWYS <b>119.1 125.325 123.85 119.3 119.5 254.4</b>					ALL RWYS <b>121.9</b>	GND CON 8L-26R,8R-26L 9L-27R,9R-27L 10-28 RWYS <b>121.75 121.65 254.4</b>
--	--	--	--	--	--	--	-----------------------------	---

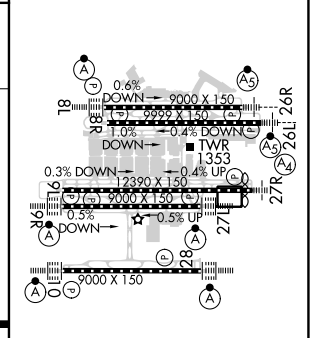
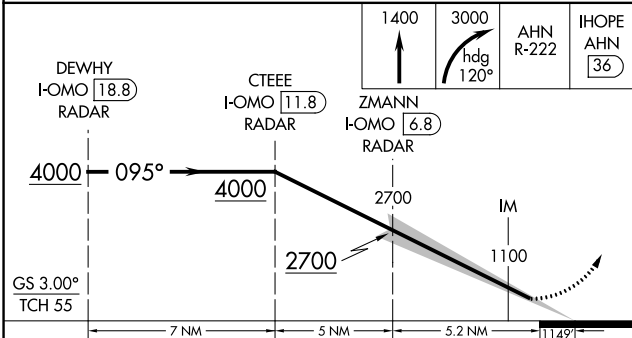
CLNC DEL <b>118.1</b>	CPDLC
-----------------------------	-------



SE-4, 22 FEB 2024 to 21 MAR 2024

SE-4, 22 FEB 2024 to 21 MAR 2024

ELEV 1026	D	TDZE 1000
-----------	---	-----------



CATEGORY	A	B	C	D
S-ILS 10	CAT II RA 110/12 100 DA 1100			
S-ILS 10	CAT III RVR 07			
<b>CATEGORY II &amp; III ILS - SPECIAL AIRCREW &amp; AIRCRAFT CERTIFICATION REQUIRED</b>				

HIRL all Rwy's  
TDZ/CL Rwy's 8L,  
9R, 10, 26R, 27L and 28