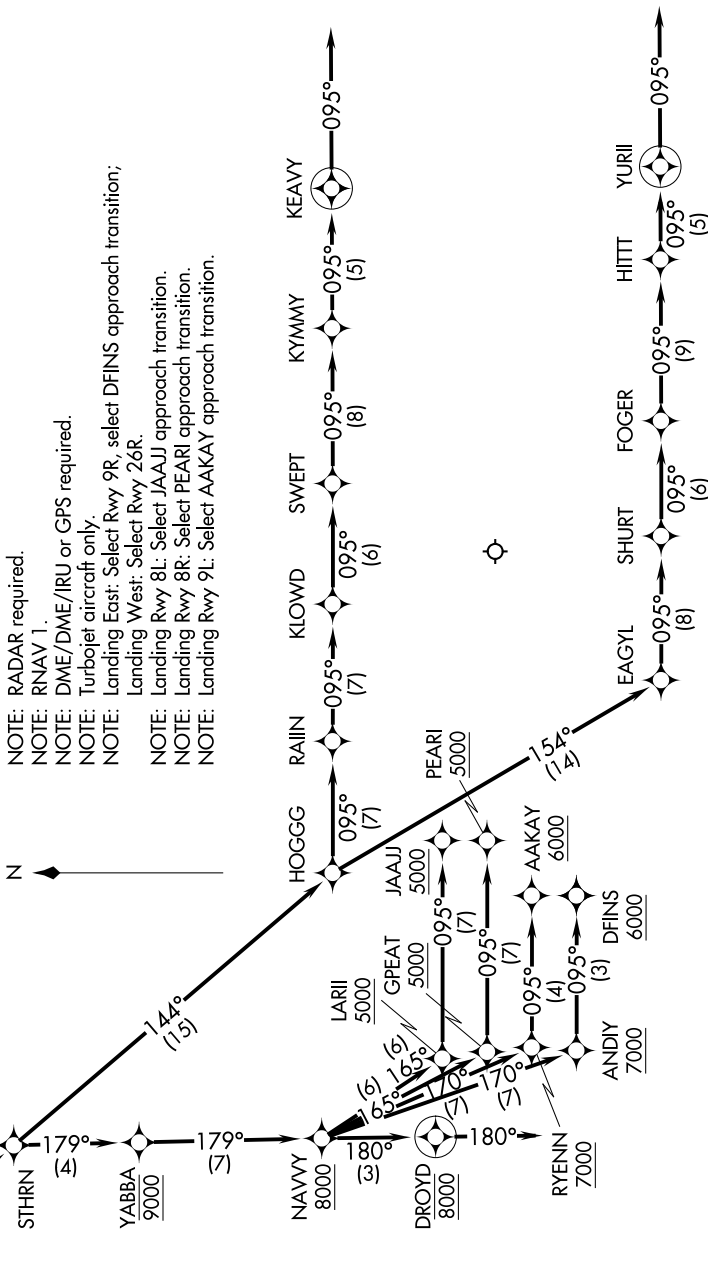


GLAVN ONE ARRIVAL (RNAV) Arrival Routes

SE-4, 22 FEB 2024 to 21 MAR 2024

D-ATIS ARR
119.65
ATLANTA APP CON
128.0 379.9

GLAVN
Landing West: Expect 14000
Landing East: Expect 12000 and 250K



- NOTE: RADAR required.
- NOTE: RNAV 1.
- NOTE: DME/DME/IRU or GPS required.
- NOTE: Turboprop aircraft only.
- NOTE: Landing East: Select Rwy 9R, select DFINS approach transition;
- NOTE: Landing West: Select Rwy 26R.
- NOTE: Landing Rwy 8L: Select JAAJ approach transition.
- NOTE: Landing Rwy 8R: Select PEARL approach transition.
- NOTE: Landing Rwy 9L: Select AAKAY approach transition.

(NARRATIVE CONTINUED ON FOLLOWING PAGE)

NOTE: Chart not to scale.

SE-4, 22 FEB 2024 to 21 MAR 2024

GLAVN ONE ARRIVAL (RNAV) Arrival Routes