

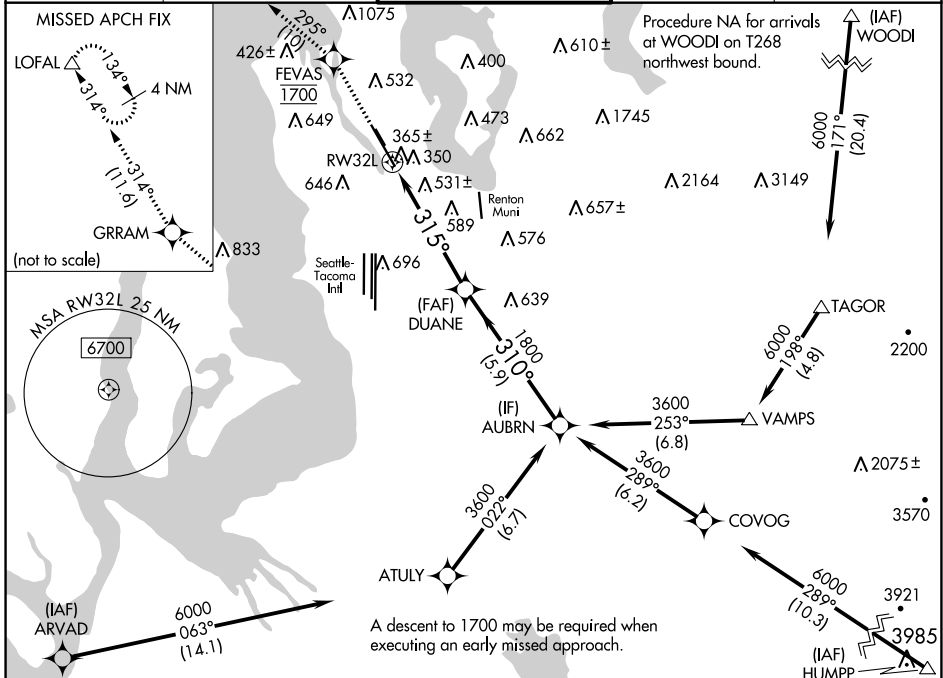
WAAS CH 89057 W32A	APP CRS 315°	Rwy Idg TDZE 22 Apt Elev 22
--	------------------------	---

RNAV (GPS) Y RWY 32L

BOEING FLD/KING COUNTY INTL (BFI)

RNP APCH - GPS.		MISSED APPROACH: Climb direct FEVAS, cross FEVAS at 1700, then climb to 3000 on the RNAV missed approach route to LOFAL and hold.	
RADAR required for missed approach.			
<p>▼ For uncompensated Baro-VNAV systems, LNAV/VNAV NA below -6°C or above 54°C. Circling NA for Cats C and D northeast of Rwy 14L-32R. Circling Rwy 32R NA at night. Rwy 32L helicopter visibility reduction below ¾ SM NA.</p>			

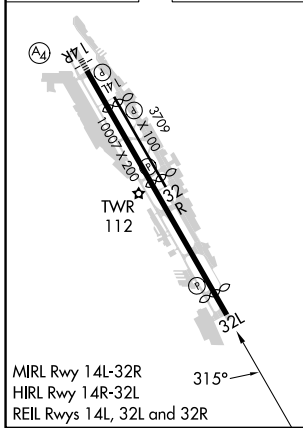
ATIS 127.75	SEATTLE APP CON 125.9 306.9	BOEING TOWER 120.6 257.8	GND CON 121.9	CLNC DEL 132.4
-----------------------	---------------------------------------	------------------------------------	-------------------------	--------------------------



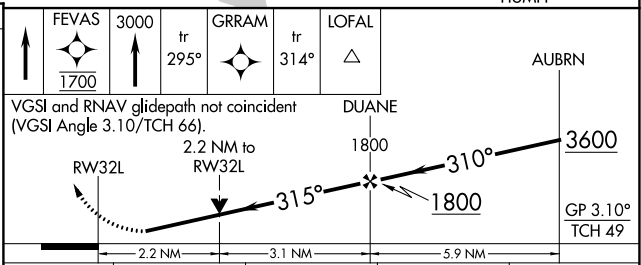
NW-1, 30 NOV 2023 to 28 DEC 2023

NW-1, 30 NOV 2023 to 28 DEC 2023

ELEV 22	D	TDZE 22
---------	----------	---------



MIRL Rwy 14L-32R
HIRL Rwy 14R-32L
REIL Rwy 14L, 32L and 32R



CATEGORY	A	B	C	D
LPV DA		478-1 3/8	456 (500-1 1/2)	
LNAV/VNAV DA		884-2 1/2	862 (900-2 1/2)	
LNAV MDA	800-1 778 (800-1)	800-1 1/4 778 (800-1 1/4)	800-2 1/2 778 (800-2 1/2)	960-3 938 (1000-3)
CIRCLING	800-1 778 (800-1)	900-1 1/4 878 (900-1 1/4)	960-2 3/4 938 (1000-2 3/4)	960-3 938 (1000-3)