

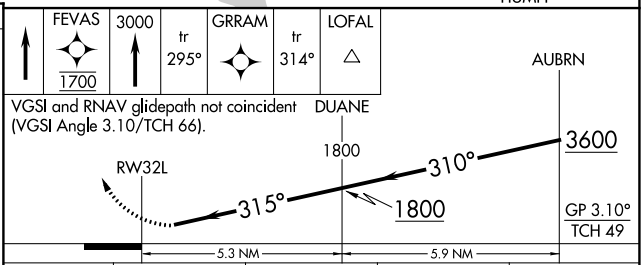
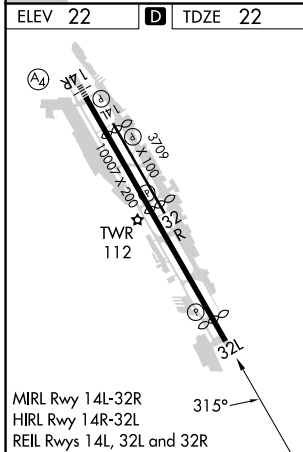
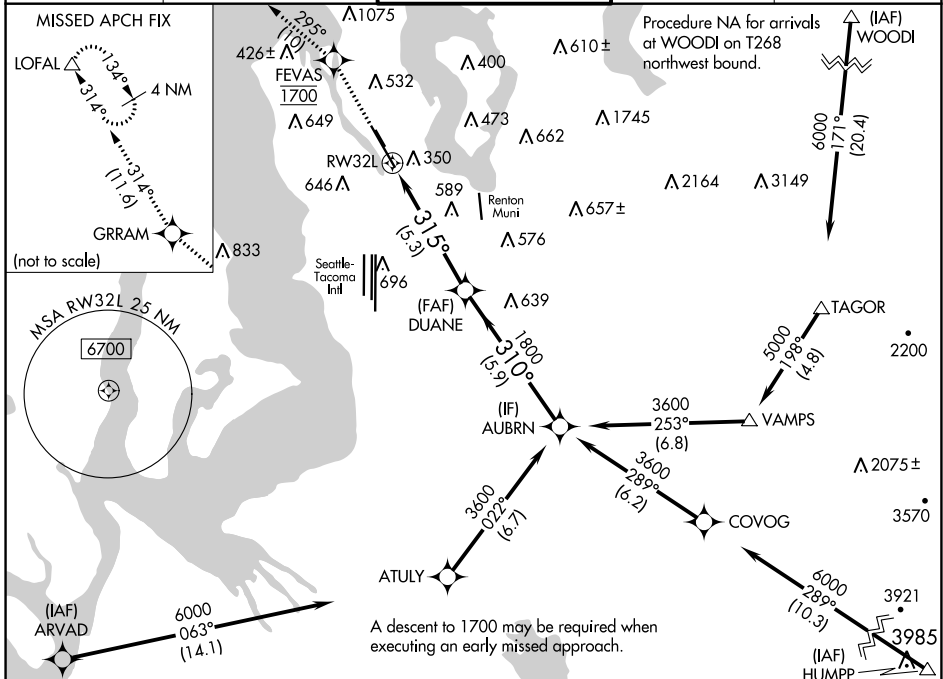
APP CRS <b>315°</b>	Rwy Idg TDZE Apt Elev	<b>9120</b> <b>22</b> <b>22</b>
------------------------	-----------------------------	---------------------------------------

# RNAV (RNP) Z RWY 32L

BOEING FLD/KING COUNTY INTL (BFI)

RNP AR APCH - GPS.	MISSED APPROACH: Climb direct FEVAS, cross FEVAS at 1700, then climb to 3000 on the RNAV missed approach route to LOFAL and hold.
RADAR required for missed approach.	
<p>▼ For uncompensated Baro-VNAV systems, procedure NA below -6°C or above 54°C.</p> <p>▲</p>	

ATIS <b>127.75</b>	SEATTLE APP CON <b>125.9 306.9</b>	BOEING TOWER <b>120.6 257.8</b>	GND CON <b>121.9</b>	CLNC DEL <b>132.4</b>
-----------------------	---------------------------------------	------------------------------------	-------------------------	--------------------------



CATEGORY	A	B	C	D
RNP 0.10 DA		567-1 $\frac{1}{8}$	545 (600-1 $\frac{1}{8}$ )	
RNP 0.15 DA		681-1 $\frac{1}{8}$	659 (700-1 $\frac{1}{8}$ )	
RNP 0.30 DA		836-2 $\frac{1}{2}$	814 (900-2 $\frac{1}{2}$ )	

## AUTHORIZATION REQUIRED

NW-1, 30 NOV 2023 to 28 DEC 2023

NW-1, 30 NOV 2023 to 28 DEC 2023