

SKYKO ONE ARRIVAL

NW-1, 10 AUG 2023 to 07 SEP 2023

SEATTLE APP CON
123.9 338.2
BFI ATIS
127.75
RIN ATIS
126.95
SEA D-ATIS
118.0

ARRIVAL ROUTE DESCRIPTION

EPHRATA TRANSITION (EPH.SKYKO1): From over EPH VORTAC on EPH R-266 and PAE R-085 to SKYKO. Thence
ODESS TRANSITION (ODESS.SKYKO1): From over ODESS on EPH R-082 to EPH VORTAC, then on EPH R-266 and PAE R-085 to SKYKO. Thence

. from SKYKO on PAINE VOR/DME (PAE) R-085 to cross HUVUS between 10000 and 13000, then on SEATTLE VORTAC (SEA) SEA R-023 to cross HETHR between 10000 and 13000, thence

LANDING NORTH: Fly heading 163°. Expect RADAR vectors to final approach course.
LANDING SOUTH: Fly heading 250°. Expect RADAR vectors to final approach course.

LOST COMMUNICATIONS: Maintain last assigned altitude. From over HETHR, proceed direct SEA VORTAC and hold.



PAINE
N47°49.86'
W121°46.74'
110.6 PAE :--:--:
Chan 43

HUVUS
N47°49.86'
W121°46.74'
13000
10000

HETHR
N47°33.54'
W122°08.70'
13000
10000

SKYKO
N47°46.03'
W121°25.73'
16000
13000

EPHRATA
112.6 EPH :--:--:
Chan 73
N47°22.68'
W119°25.44'
FL180

MOSES LAKE
115.0 MAWH :--:--:
Chan 97
FL180

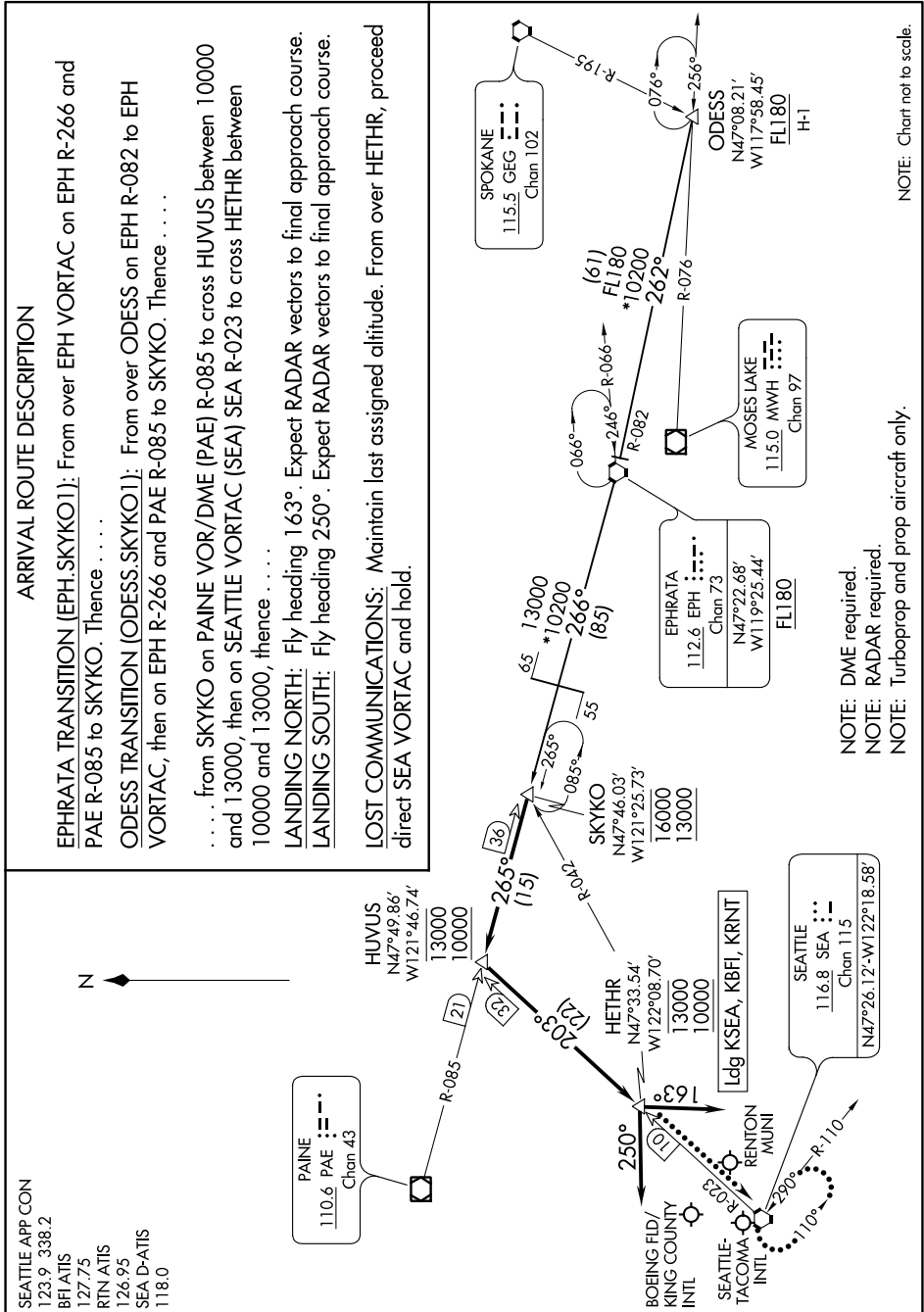
ODESS
N47°08.21'
W117°58.45'
FL180
H-1

SPOKANE
115.5 GEG :--:--:
Chan 102

SEATTLE
116.8 SEA :--:--:
Chan 115
N47°26.12'-W122°18.58'

SKYKO ONE ARRIVAL

NW-1, 10 AUG 2023 to 07 SEP 2023



NOTE: DME required.
 NOTE: RADAR required.
 NOTE: Turboprop and prop aircraft only.

NOTE: Chart not to scale.