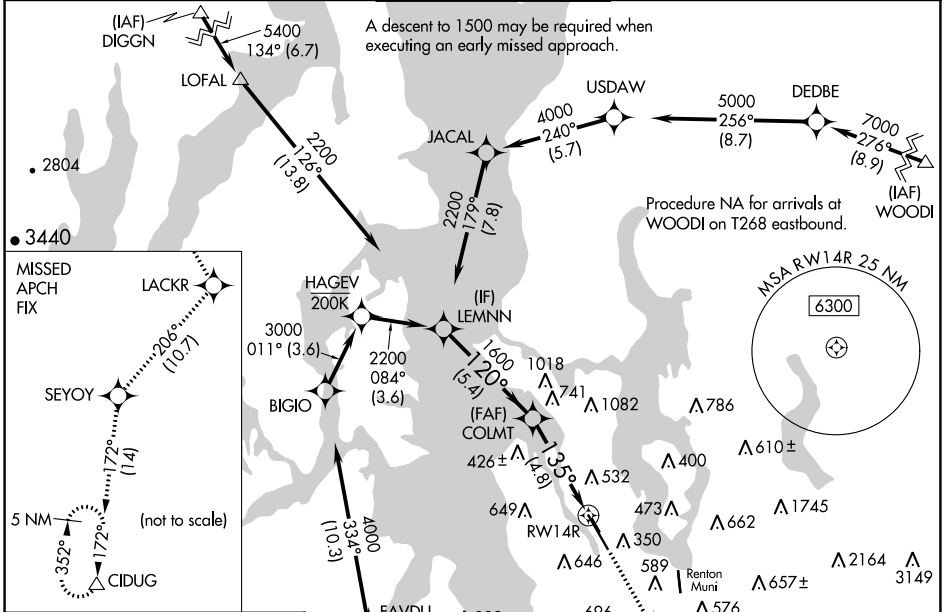


APP CRS	Rwy Idg	<b>9120</b>
<b>135°</b>	TDZE	<b>18</b>
	Apt Elev	<b>22</b>

# RNAV (RNP) Z RWY 14R

BOEING FLD/KING COUNTY INTL (BFI)

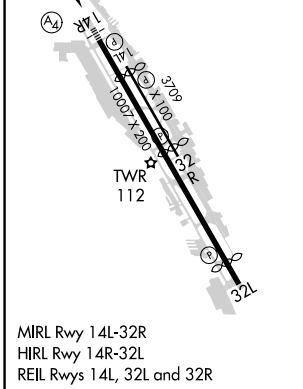
RNP AR APCH - GPS.		RADAR required for missed approach.		MALSF	MISSED APPROACH: Climb direct OCEZE, cross OCEZE at 1500, then climb to 5000 on the RNAV missed approach route to CIDUG and hold.
<p>▼ For uncompensated Baro-VNAV systems, procedure NA below -6°C or above 54°C. For inop ALS, increase RNP 0.15 visibility to 1 3/8 SM.</p>					
ATIS	SEATTLE APP CON	BOEING TOWER	GND CON	CLNC DEL	
<b>127.75</b>	<b>125.9 306.9</b>	<b>120.6 257.8</b>	<b>121.9</b>	<b>132.4</b>	



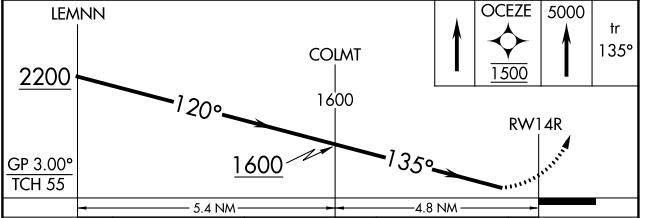
NW-1, 10 AUG 2023 to 07 SEP 2023

NW-1, 10 AUG 2023 to 07 SEP 2023

ELEV 22	<b>D</b>	TDZE 18
---------	----------	---------



MIRL Rwy 14L-32R  
 HIRL Rwy 14R-32L  
 REIL Rwy 14L, 32L and 32R



CATEGORY	A	B	C	D
RNP 0.10 DA		448/50	430 (500-1)	
RNP 0.15 DA		522-1 1/4	504 (500-1 1/4)	
RNP 0.30 DA		708-1 3/4	690 (700-1 3/4)	

## AUTHORIZATION REQUIRED