

WAAS CH <b>81936</b> <b>W01A</b>	APP CRS <b>007°</b>	Rwy Idg <b>4199</b> TDZE <b>492</b> Apt Elev <b>492</b>
--	------------------------	---

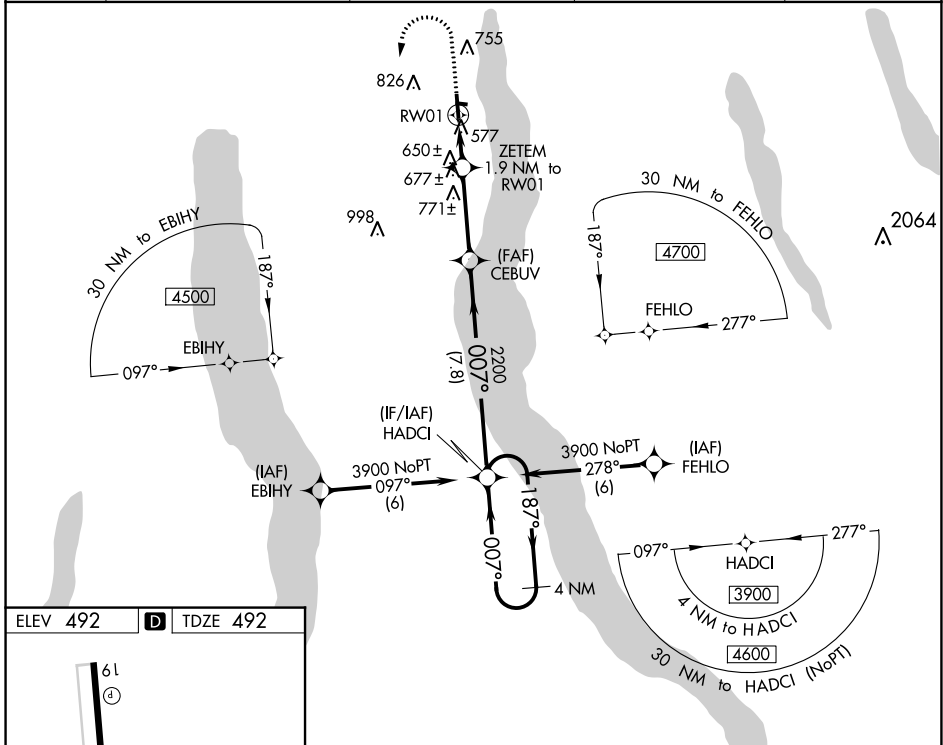
# RNAV (GPS) RWY 1

FINGER LAKES RGNL (ØG7)

**▽** For uncompensated Baro-VNAV systems, LNAV/VNAV NA below -15°C (5°F) or above 54°C (130°F). Baro-VNAV and VDP NA when using Syracuse altimeter setting. Rwy 1 helicopter visibility reduction below 3/4 SM NA. DME/DME RNP-0.3 NA. When local altimeter setting not received, use Syracuse altimeter setting and increase all DA 86 feet and all visibility 1/4 SM, increase all MDA 100 feet.

**△** NA MISSED APPROACH: Climb to 1000 then climbing left turn to 3900 direct HADCI and hold, continue climb-in-hold to 3900.

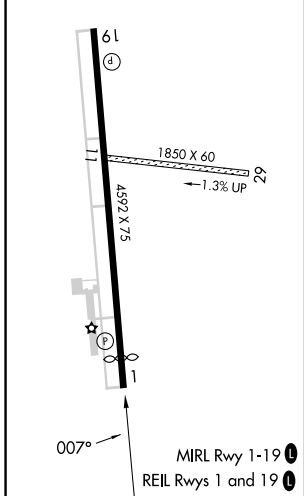
AWOS-3 <b>120.0</b>	SYRACUSE APP CON <b>126.125 269.125</b>	ROCHESTER APP CON <b>119.55 269.6</b> (W-NW)	ELMIRA APP CON ★ <b>124.3 257.8</b> (SW-SE)	UNICOM <b>122.8</b> (CTAF) <b>Ø</b>
------------------------	--	---	--	--



NE-2, 18 MAY 2023 to 15 JUN 2023

NE-2, 18 MAY 2023 to 15 JUN 2023

ELEV <b>492</b>	<b>D</b>	TDZE <b>492</b>
-----------------	----------	-----------------



	1000	3900	HADCI	4 NM Holding Pattern
	↑	↻	✧	
	* LNAV only		ZETEM	CEBUV
	* 1.2 NM to 1.9 NM to RWY 1		2200	2200
	* 1120		007°	007°
	1.2 NM		0.7 NM	3.3 NM
	7.8 NM			
CATEGORY	A	B	C	D
LPV DA	742-7/8	250 (300-7/8)		NA
LNAV/VNAV DA	959-1 1/8	467 (500-1 1/8)		NA
LNAV MDA	900-1	408 (500-1)		NA
CIRCLING	980-1 488 (500-1)	1180-1 688 (700-1)		NA