

APP CRS **190°**
 Rwy Idg **5201**
 TDZE **726**
 Apt Elev **726**

RNAV (GPS) RWY 19

JAMES A RHODES (JRO)

RNP APCH - GPS.

Procedure NA at night.
 Rwy 19 helicopter visibility reduction below 1 SM NA.

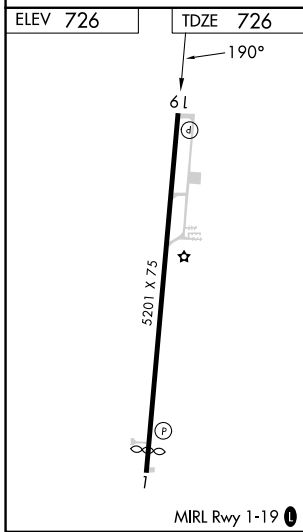
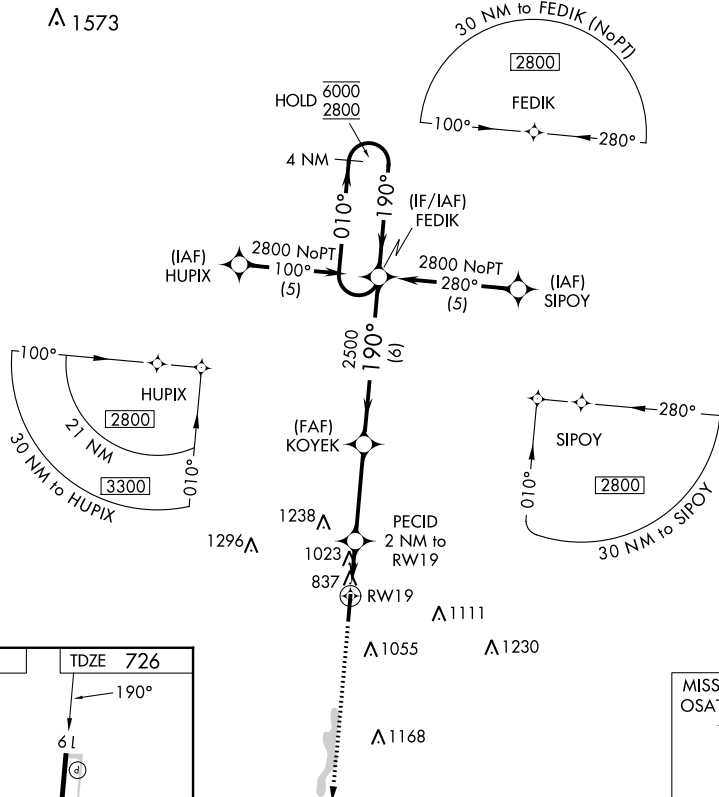
MISSED APPROACH: Climb to 2800 direct OSATE and hold.

AWOS-3
118.825

HUNTINGTON APP CON
128.4 270.1

UNICOM
122.7 (CTAF) 0

▲ 1573



2800 OSATE ↑	VGSi and descent angles not coincident (VGSi Angle 4.00/TCH 45).		FEDIK 4 NM Holding Pattern	
	RWY 19 3.32° TCH 40	KOYEK 2500	190°	010° → 6000 ← 190° 2800
RWY 19 2 NM to RWY 19	PECID 2 NM to RWY 19	1460	2500	6 NM
CATEGORY	A	B	C	D
LNAV MDA	1280-1	554 (600-1)	1280-1½ 554 (600-1½)	554 (600-1½)
CIRCLING	1340-1 614 (700-1)	1480-1 754 (800-1)	1680-3	954 (1000-3)

EC-2, 18 MAY 2023 to 15 JUN 2023

EC-2, 18 MAY 2023 to 15 JUN 2023