

APP CRS	Rwy Idg	4870
010°	TDZE	722
	Apt Elev	726

RNAV (GPS) RWY 1

JAMES A RHODES (JRO)

RNP APCH - GPS.

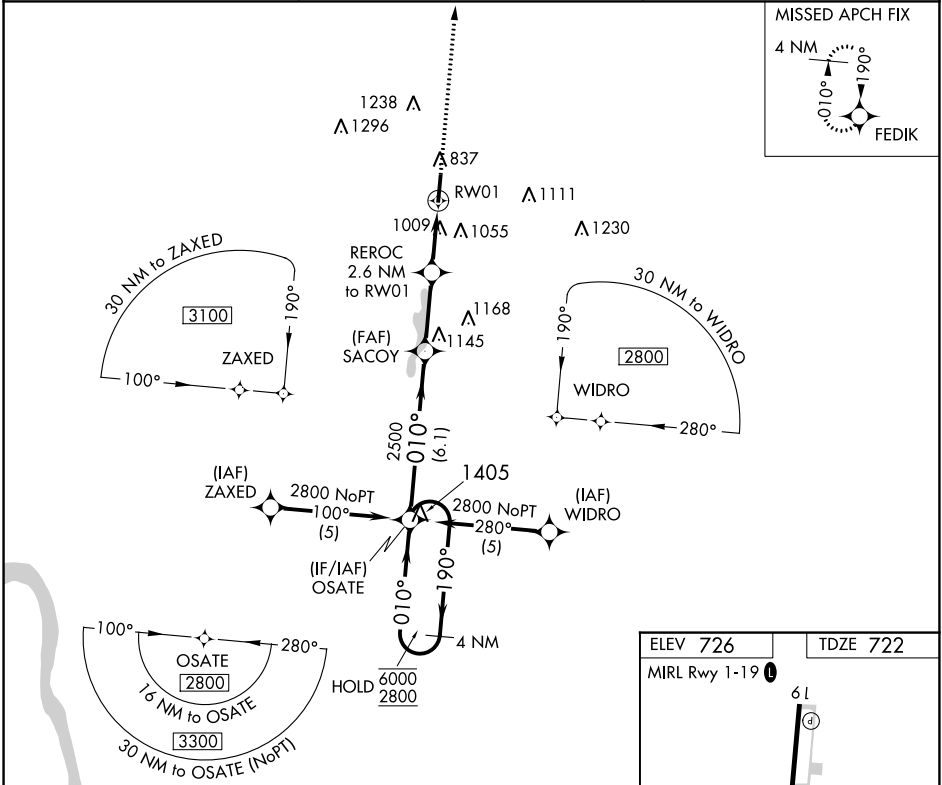
MISSED APPROACH:
Climb to 2800 direct
FEDIK and hold.



Procedure NA at night. Rwy 1 helicopter visibility reduction below 1 SM NA.

AWOS-3 118.825	HUNTINGTON APP CON 128.4 270.1	UNICOM 122.7(CTAF) 0
--------------------------	--	--------------------------------

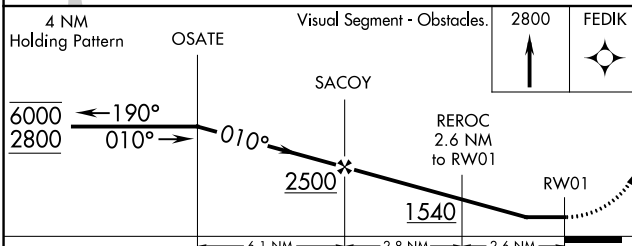
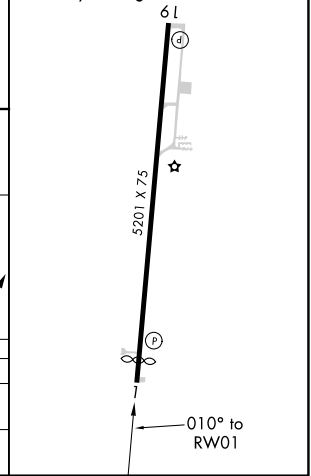
MISSED APCH FIX



EC-2, 18 MAY 2023 to 15 JUN 2023

EC-2, 18 MAY 2023 to 15 JUN 2023

ELEV 726	TDZE 722
MIRL Rwy 1-19 0	



CATEGORY	A	B	C	D
RNAV MDA	1300-1	578 (600-1)	1300-1½	578 (600-1½)
CIRCLING	1340-1 614 (700-1)	1480-1 754 (800-1)	1680-3	954 (1000-3)