

BOLINGBROOK, ILLINOIS

AL-6535 (FAA)

23054

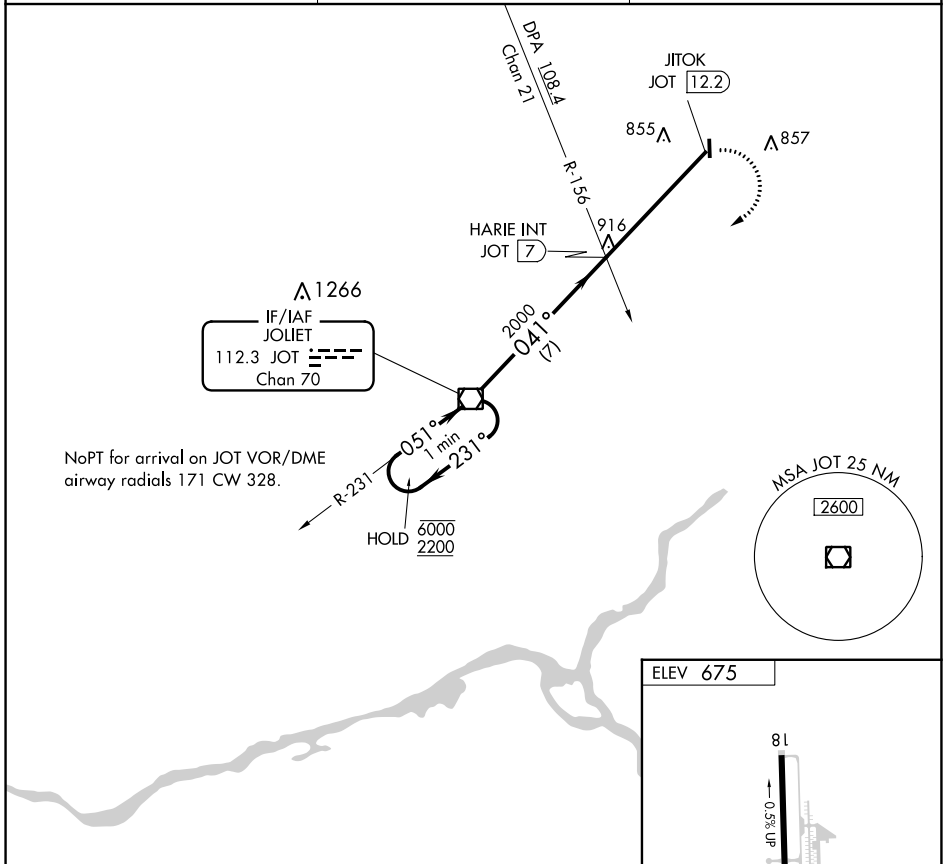
VOR/DME JOT 112.3 Chan 70	APP CRS 041°	Rwy Idg TDZE Apt Elev	N/A N/A 675
---	------------------------	-----------------------------	--

VOR-A

BOLINGBROOK'S CLOW INTL (1C5)

NA Procedure NA at night. Use Lewis University altimeter setting.	MISSED APPROACH: Climbing right turn to 2200 direct JOT VOR/DME and hold.
--	---

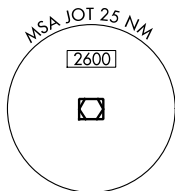
LOT AWOS-3PT 126.675	CHICAGO APP CON 119.35 354.075	CTAF 122.9
--------------------------------	--	----------------------



NoPT for arrival on JOT VOR/DME airway radials 171 CW 328.

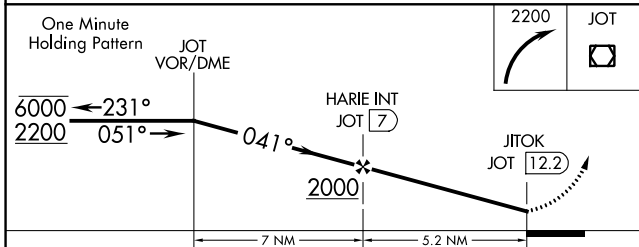
IF/IAF JOLIET
112.3 JOT
Chan 70

HOLD 6000/2200



ELEV 675

81
0.5% UP
3360 X 775
36
MRL Rwy 18-36



CATEGORY	A	B	C	D	FAF to MAP 5.2 NM					
CIRCLING	1180-1 505 (600-1)	1220-1 545 (600-1)	NA		Knots	60	90	120	150	180
					Min:Seq	5:12	3:28	2:36	2:05	1:44

BOLINGBROOK, ILLINOIS
Amdt 1B 15AUG19

41°42'N - 88°08'W

BOLINGBROOK'S CLOW INTL (1C5)
VOR-A

EC-3, 18 MAY 2023 to 15 JUN 2023

EC-3, 18 MAY 2023 to 15 JUN 2023