

WAAS CH 69205 W17A	APP CRS 170°	Rwy Ldg TDZE 763 Apt Elev 763	5000
--	------------------------	---	-------------

RNAV (GPS) RWY 17

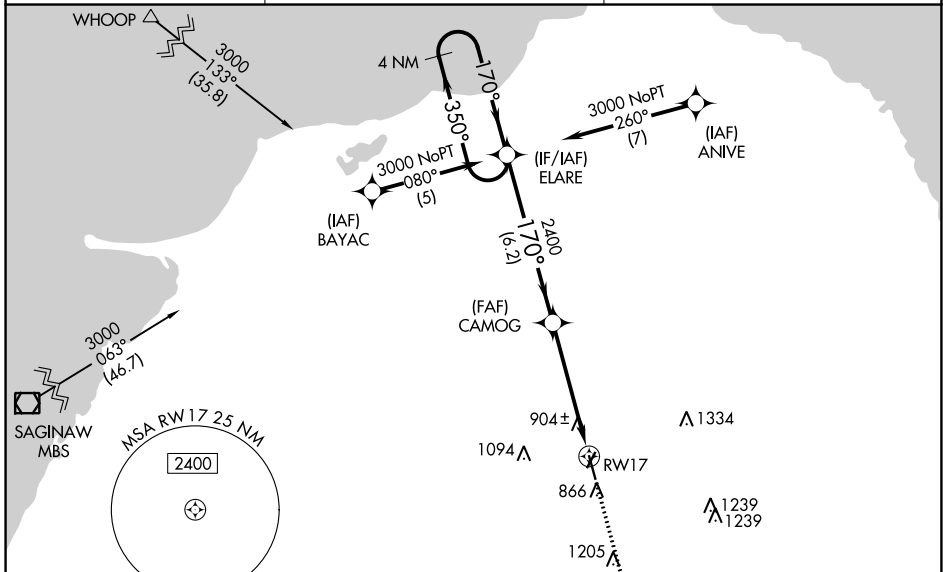
HURON COUNTY MEML (BAX)

RNP APCH.

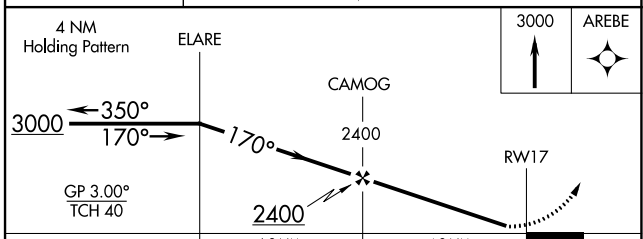
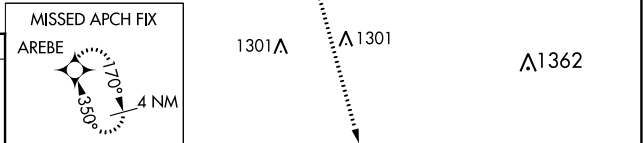
Baro-VNAV NA when using MBS Intl altimeter setting. For uncompensated Baro-VNAV systems, LNAV/VNAV NA below -16°C or above 54°C. When local altimeter setting not received, use MBS Intl altimeter setting and increase all DA 129 feet and all MDA 140 feet, increase LPV all Cats visibility 3/8 mile; increase LNAV Cat C 1/2 mile. Rwy 17 helicopter visibility reduction below 3/4 SM NA.

MISSED APPROACH: Climb to 3000 direct AREBE and hold.

AWOS-3 118.6	CLEVELAND CENTER 126.75 348.75	UNICOM 123.075 (CTAF) 0
------------------------	--	-----------------------------------



ELEV 763	TDZE 763
----------	----------



CATEGORY	A	B	C	D
LPV DA		1075-1	312 (400-1)	NA
LNAV/VNAV DA		1352-2	589 (600-2)	NA
LNAV MDA	1220-1	457 (500-1)	1220-1 1/4 457 (500-1 1/4)	NA

EC-1, 18 MAY 2023 to 15 JUN 2023

EC-1, 18 MAY 2023 to 15 JUN 2023