

WAAS CH <b>87104</b> <b>W18A</b>	APP CRS <b>185°</b>	Rwy Idg <b>4999</b> TDZE <b>418</b> Apt Elev <b>418</b>
--	------------------------	---

# RNAV (GPS) RWY 18

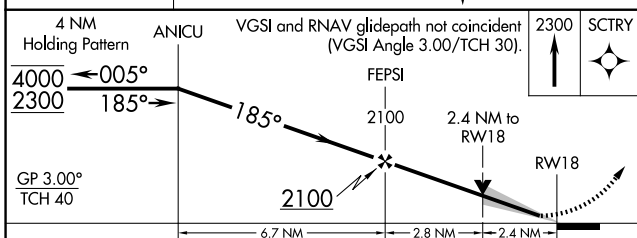
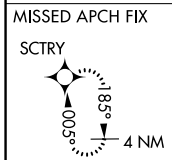
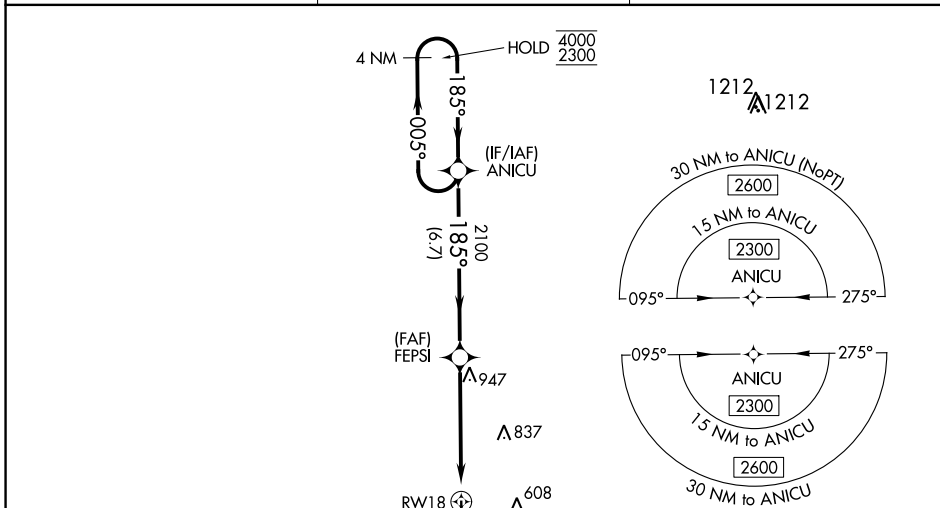
PERRY-HOUSTON COUNTY (PXE)

RNP APCH-GPS.

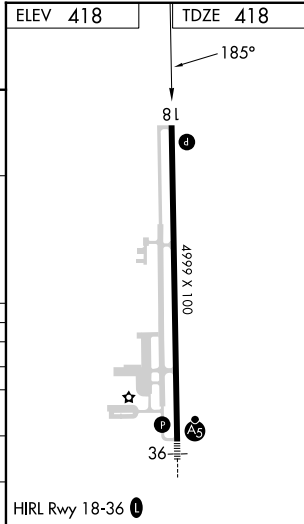
▼ Baro-VNAV and VDP NA when using Middle Georgia Rgnl altimeter setting.  
 ▲ For uncompensated Baro-VNAV systems, LNAV/VNAV NA below -15°C or above 54°C.  
 When local altimeter setting not received, use Middle Georgia Rgnl altimeter setting and increase LPV DA to 656 feet; increase LNAV/VNAV DA to 857 feet and all visibilities ½ SM. Increase all MDAs 40 feet; and Circling visibility Cat A and D ¼ SM.

MISSED APPROACH: Climb to 2300 direct SCTRY and hold.

AWOS-3 <b>123.825</b>	ATLANTA APP CON ★ <b>124.2 279.6</b>	UNICOM <b>122.725 (CTAF) 0</b>
--------------------------	---	-----------------------------------



CATEGORY	A	B	C	D
LPV DA		618-¾	200 (200-¾)	
LNAV/VNAV DA		819-1⅛	401 (500-1⅛)	
LNAV MDA	1200-1 782 (800-1)	1200-1¼ 782 (800-1¼)	1200-2½ 782 (800-2½)	782 (800-2½)
CIRCLING	1200-1 782 (800-1)	1200-1¼ 782 (800-1¼)	1200-2½ 782 (800-2½)	1280-2¾ 862 (900-2¾)



SE-4, 18 MAY 2023 to 15 JUN 2023

SE-4, 18 MAY 2023 to 15 JUN 2023