

VOR/DME BSV 112.4 Chan 71	APP CRS 296°	Rwy Idg 4971 TDZE 1134 Apt Elev 1136
-----------------------------------------------	------------------------	-----------------------------------------------------------------

VOR RWY 28

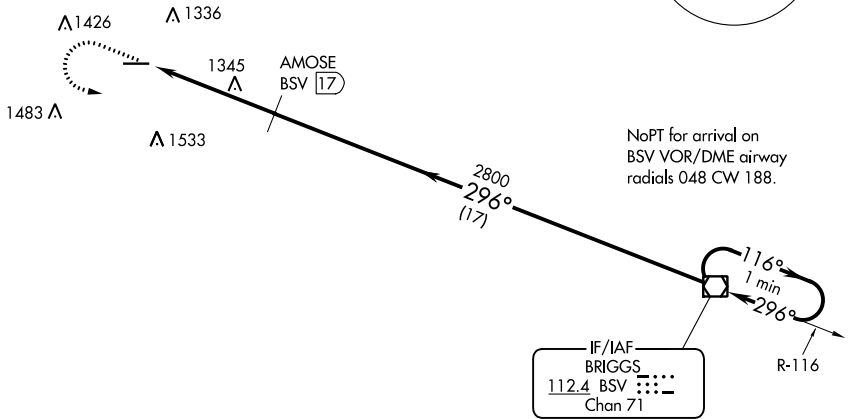
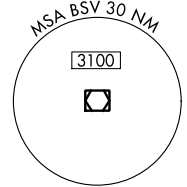
WAYNE COUNTY (BJJ)

⚠ DME required. Helicopter visibility reduction below ¾ SM NA.
⚠ When local altimeter setting not received, use Akron-Canton Rgnl altimeter setting and increase all MDA 60 feet and visibility Circling Cat C/D ¼ SM.

MISSED APPROACH: Climb to 2800 then left turn direct BSV VOR/DME and hold.

ASOS 118,075	CLEVELAND APP CON * 118.6 371.875	CLNC DEL 121.75	UNICOM 122.8 (CTAF) 0
------------------------	---------------------------------------------	---------------------------	---------------------------------

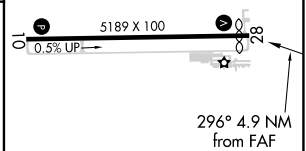
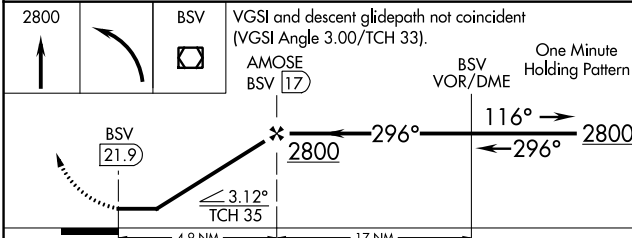
DME REQUIRED



NoPT for arrival on BSV VOR/DME airway radials 048 CW 188.

IF/IAF
BRIGGS
112.4 BSV
Chan 71

ELEV 1136	TDZE 1134
-----------	-----------



CATEGORY	A	B	C	D
S-28	1660-1 526 (600-1)	1660-1¼ 526 (600-1¼)	1660-1½ 526 (600-1½)	1660-1¾ 526 (600-1¾)
CIRCLING	1660-1 524 (600-1)	1700-1¼ 564 (600-1¼)	1800-1¾ 664 (700-1¾)	1840-2¼ 704 (800-2¼)

REIL Rwy 10 and 28 0
HIRL Rwy 10-28 0

FAF to MAP 4.9 NM

Knots	60	90	120	150	180
Min:Sec	4:54	3:16	2:27	1:58	1:38

EC-2, 18 MAY 2023 to 15 JUN 2023

EC-2, 18 MAY 2023 to 15 JUN 2023