

WAAS CH 82215 W28A	APP CRS 277°	Rwy Idg 4971 TDZE 1134 Apt Elev 1136
--	------------------------	---

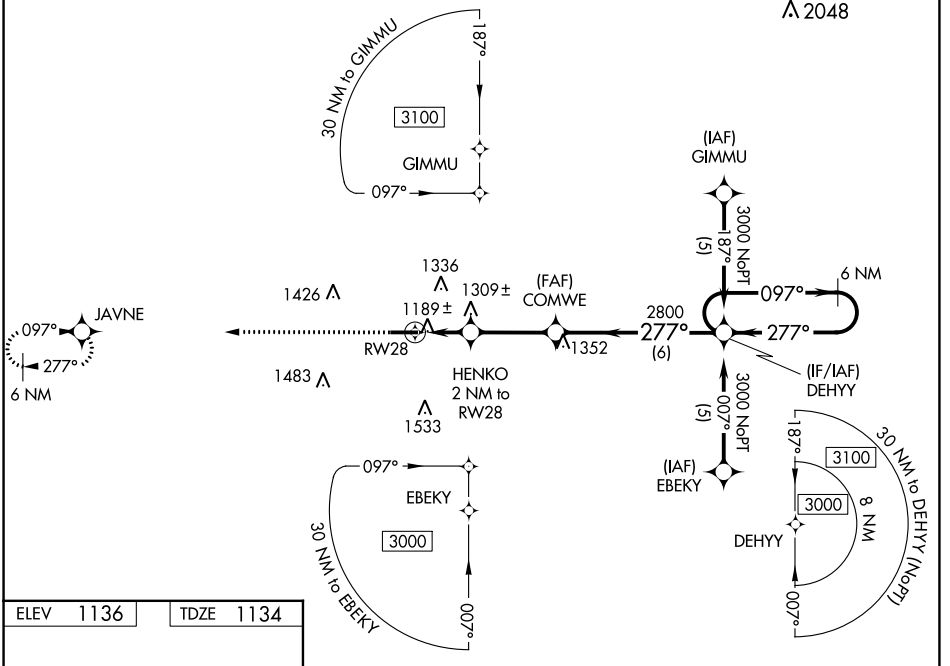
RNAV (GPS) RWY 28

WAYNE COUNTY (BJJ)

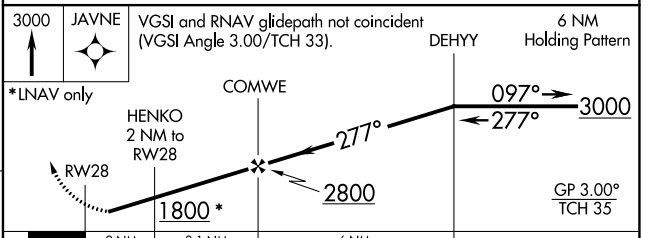
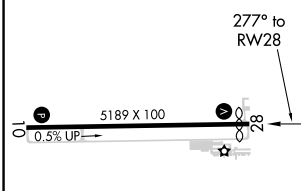
⚠ Baro-VNAV NA when using Akron-Canton Rgnl altimeter setting. For uncompensated Baro-VNAV systems, LNAV/VNAV NA below -17°C (2°F) or above 54°C (130°F). Helicopter visibility reduction below 3/4 SM NA. When local altimeter setting not received, use Akron-Canton Rgnl altimeter setting: increase LPV DA to 1458 feet, LNAV/VNAV DA to 1649 feet, and visibility LPV all Cats 1/2 SM and LNAV/VNAV all Cats 3/4 SM; increase all MDA 60 feet and visibility LNAV Cat C/D 1/2 SM and Circling Cat C/D 1/4 SM.

MISSED APPROACH: Climb to 3000 direct JAVNE and hold.

ASOS 118.075	CLEVELAND APP CON * 118.6 371.875	CLNC DEL 121.75	UNICOM 122.8 (CTAF) 0
------------------------	---	---------------------------	---------------------------------



ELEV 1136	TDZE 1134
-----------	-----------



CATEGORY	A	B	C	D
LPV DA	1398-1 264 (300-1)			
LNAV/VNAV DA	1589-1 1/8 455 (500-1 1/8)			
LNAV MDA	1560-1	426 (500-1)	1560-1 1/4	426 (500-1 1/4)
CIRCLING	1600-1 464 (500-1)	1700-1 564 (600-1)	1800-1 3/4 664 (700-1 3/4)	1840-2 1/4 704 (800-2 1/4)

REIL Rwy 10 and 28 0
HIRL Rwy 10-28 0

40°52'N-81°53'W

WAYNE COUNTY (BJJ)

RNAV (GPS) RWY 28

EC-2, 18 MAY 2023 to 15 JUN 2023

EC-2, 18 MAY 2023 to 15 JUN 2023