

APP CRS	Rwy Idg	<b>4899</b>
<b>083°</b>	TDZE	<b>634</b>
	Apt Elev	<b>634</b>

# RNAV (GPS) RWY 8

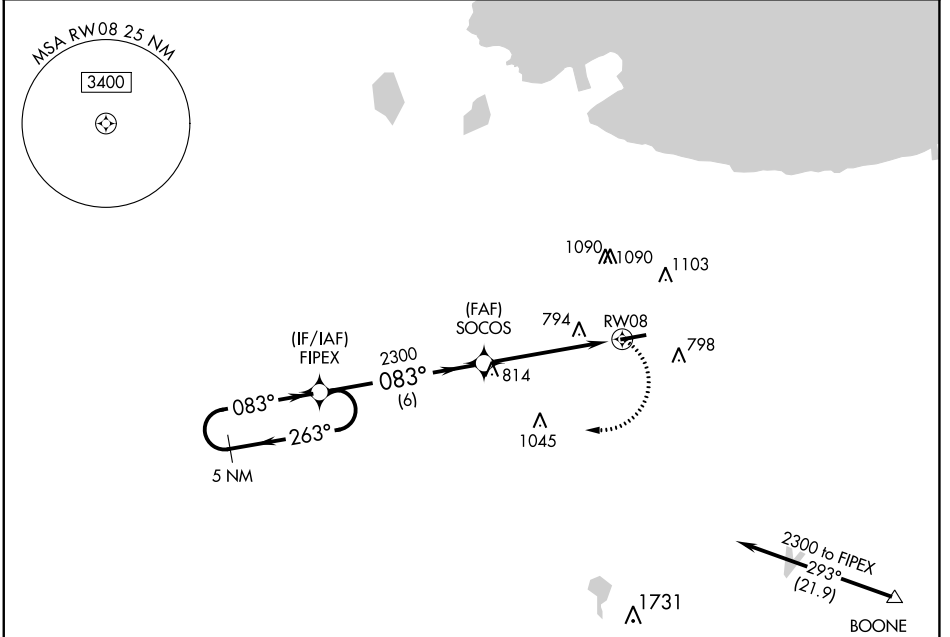
GRIFFITH-MERRILLVILLE (Ø5C)

RNP APCH.  
 ▼ Obtain local altimeter setting on CTAF; when not received use Chicago Midway  
 ▲ NA Init altimeter setting and increase all MDAs 60 feet. Visibility reduction by  
 helicopters NA. Procedure NA at night.

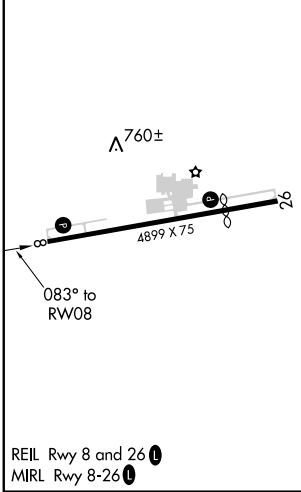
MISSED APPROACH: Climbing right  
 turn to 2300 direct FIPEX and hold.

CHICAGO APP CON  
**133.1 285.6**

UNICOM  
**123.0 (CTAF) 0**



ELEV 634	TDZE 634
----------	----------



5 NM Holding Pattern	VGSi and descent angles not coincident (VGSi Angle 3.50/TCH 44).		2300	FIPEX
	FIPEX	SOCOS		
	2300	2300		RWY 08
		3.04° TCH 41		
		6 NM	5 NM	

CATEGORY	A	B	C	D
LNAY MDA	1080-1	446 (500-1)		NA
<input checked="" type="checkbox"/> CIRCLING	1200-1	566 (600-1)		NA

EC-2, 18 MAY 2023 to 15 JUN 2023

EC-2, 18 MAY 2023 to 15 JUN 2023