

WAAS CH <b>86833</b> <b>W17A</b>	APP CRS <b>173°</b>	Rwy Idg TDZE Apt Elev	<b>5701</b> <b>2918</b> <b>2918</b>
--	------------------------	-----------------------------	---

# RNAV (GPS) RWY 17

PERRYTON OCHILTREE COUNTY (PYX)

RNP APCH - GPS.

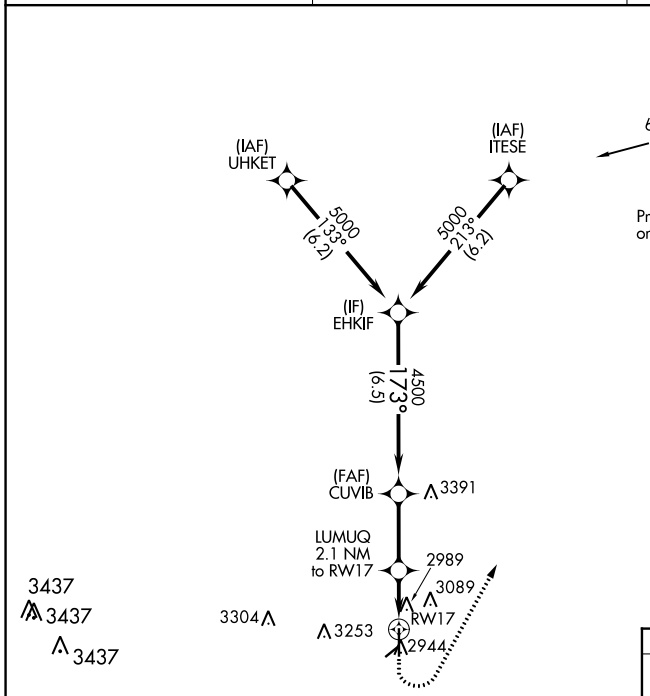
**⚠** Circling NA to Rwy 4 and 22. For uncompensated Baro-VNAV systems, LNAV/VNAV NA below -20°C or above 54°C.

**MISSED APPROACH:** Climb to 3400 then climbing left turn to 6000 direct ZALIK and hold.

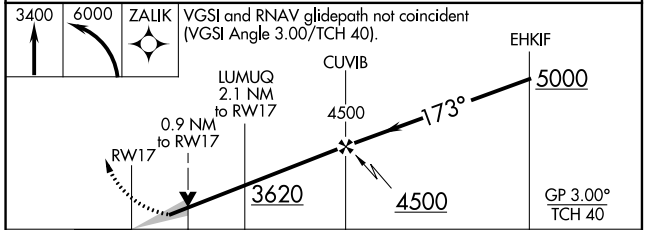
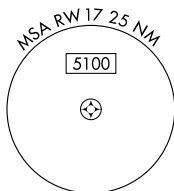
AWOS-3  
**118.175**

KANSAS CITY CENTER  
**126.95 379.2**

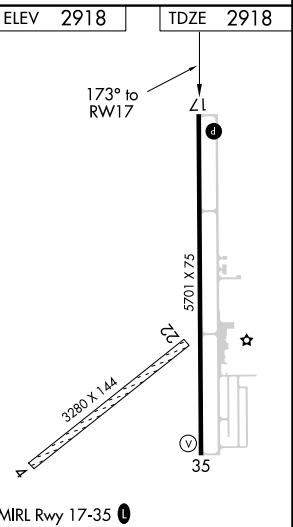
UNICOM  
**122.8 (CTAF) 0**



Procedure NA for arrivals at ZALIK on V507 southeast bound.



CATEGORY	A	B	C	D
LPV DA	3168-3/4	250 (300-3/4)		NA
LNAV/VNAV DA	3190-7/8	272 (300-7/8)		NA
LNAV MDA	3240-1	322 (400-1)		NA
<b>C</b> CIRCLING	3300-1 382 (400-1)	3580-1 662 (700-1)		NA



SC-2, 18 MAY 2023 to 15 JUN 2023

SC-2, 18 MAY 2023 to 15 JUN 2023