

(FOLZZ2.FOLZZ) 22139

AL-5349 (FAA)

MIAMI EXEC (TMB)

FOLZZ TWO DEPARTURE (RNAV)

MIAMI, FLORIDA

ATIS
124.0
CLNC DEL
133.0
GND CON
121.7
TAMiami TOWER*
118.9 (CTAF)
MIAMI DEP CON
125.5 354.1

**TOP ALTITUDE:
ASSIGNED BY ATC**

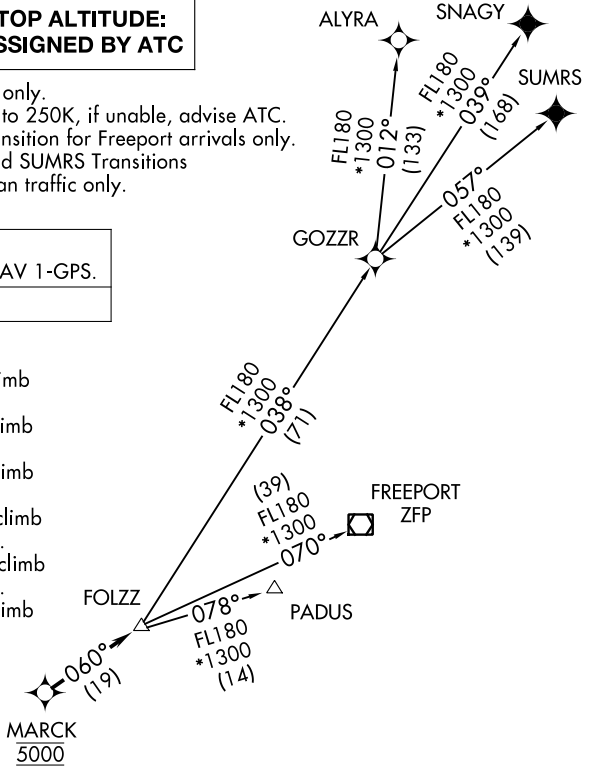
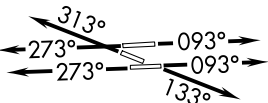
NOTE: Jet aircraft only.
NOTE: Accelerate to 250K, if unable, advise ATC.
NOTE: PADUS Transition for Freeport arrivals only.
NOTE: SNAGY and SUMRS Transitions for European traffic only.

RNAV-1 DME/DME/IRU or GPS.
SNAGY and SUMRS Transitions: RNAV 1-GPS.

RADAR required.

TAKEOFF MINIMUMS

- Rwy 9L: Standard with minimum climb of 500' per NM to 1300.
- Rwy 9R: Standard with minimum climb of 500' per NM to 1500.
- Rwy 13: Standard with minimum climb of 500' per NM to 1800.
- Rwy 27L: Standard with minimum climb of 500' per NM to 1900.
- Rwy 27R: Standard with minimum climb of 500' per NM to 1700.
- Rwy 31: Standard with minimum climb of 500' per NM to 1400.



NOTE: Chart not to scale.

DEPARTURE ROUTE DESCRIPTION

- TAKEOFF RUNWAYS 9L/R: Climb on heading 093° or as assigned for RADAR vectors to cross MARCK at 5000, thence. . .
- TAKEOFF RUNWAY 13: Climb on heading 133° or as assigned for RADAR vectors to cross MARCK at 5000, thence. . .
- TAKEOFF RUNWAYS 27L/R: Climb on heading 273° or as assigned for RADAR vectors to cross MARCK at 5000, thence. . .
- TAKEOFF RUNWAY 31: Climb on heading 313° or as assigned for RADAR vectors to cross MARCK at 5000, thence. . .

. . .on track 060° to FOLZZ, then on transition. Maintain ATC assigned altitude, expect clearance to filed altitude within 10 minutes after departure.

- ALYRA TRANSITION (FOLZZ2.ALYRA)
- FREEPORT TRANSITION (FOLZZ2.ZFP)
- GOZZR TRANSITION (FOLZZ2.GOZZR)
- PADUS TRANSITION (FOLZZ2.PADUS)
- SNAGY TRANSITION (FOLZZ2.SNAGY)
- SUMRS TRANSITION (FOLZZ2.SUMRS)

FOLZZ TWO DEPARTURE (RNAV)
(FOLZZ2.FOLZZ) 19MAY22

MIAMI, FLORIDA
MIAMI EXEC (TMB)

SE-3, 18 MAY 2023 to 15 JUN 2023

SE-3, 18 MAY 2023 to 15 JUN 2023