

(FLMGO1.FLMGO) 22139

AL-5349 (FAA)

MIAMI EXEC (TMB)
MIAMI, FLORIDA

FLMGO ONE DEPARTURE (RNAV)

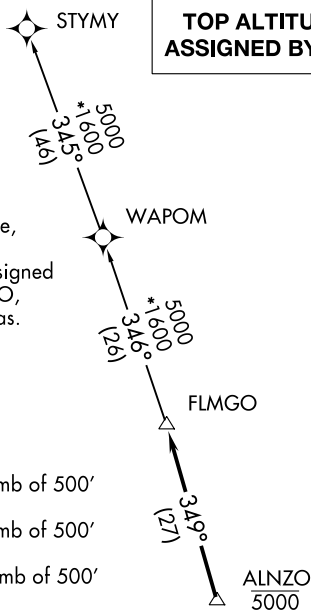
RNAV 1 - DME/DME/IRU or GPS.

RADAR required.

**TOP ALTITUDE:
ASSIGNED BY ATC**

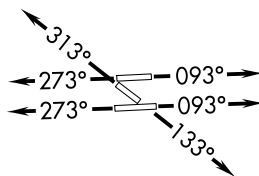
ATIS
124.0
CLNC DEL
133.0
GND CON
121.7
TAMIAMI TOWER ★
118.9 (CTAF)
MIAMI DEP CON
125.5 354.1

NOTE: Jet aircraft only.
NOTE: Accelerate to 250K, if unable, advise ATC.
NOTE: WAPOM Transition ATC assigned except aircraft landing: MCO, DAB, and MLB terminal areas.



TAKEOFF MINIMUMS

- Rwy 9L: Standard with minimum climb of 500' per NM to 1300.
- Rwy 9R: Standard with minimum climb of 500' per NM to 1500.
- Rwy 13: Standard with minimum climb of 500' per NM to 1800.
- Rwy 27L: Standard with minimum climb of 500' per NM to 1900.
- Rwy 27R: Standard with minimum climb of 500' per NM to 1700.
- Rwy 31: Standard with minimum climb of 500' per NM to 1400.



NOTE: Chart not to scale.

DEPARTURE ROUTE DESCRIPTION

- TAKEOFF RUNWAYS 9L/R: Climb on heading 093° or as assigned for RADAR vectors to cross ALNZO at 5000, then...
- TAKEOFF RUNWAY 13: Climb on heading 133° or as assigned for RADAR vectors to cross ALNZO at 5000, then...
- TAKEOFF RUNWAYS 27L/R: Climb on heading 273° or as assigned for RADAR vectors to cross ALNZO at 5000, then...
- TAKEOFF RUNWAY 31: Climb on heading 313° or as assigned for RADAR vectors to cross ALNZO at 5000, then...

...on track 349° to FLMGO, then on assigned transition. Maintain ATC assigned altitude. Expect filed altitude within 10 minutes after departure.

STYMY TRANSITION (FLMGO1.STYMY)
WAPOM TRANSITION (FLMGO1.WAPOM)

FLMGO ONE DEPARTURE (RNAV)

(FLMGO1.FLMGO) 19MAY22

MIAMI, FLORIDA
MIAMI EXEC (TMB)

SE-3, 18 MAY 2023 to 15 JUN 2023

SE-3, 18 MAY 2023 to 15 JUN 2023