

WAAS CH 97639	APP CRS 170°	Rwy Idg TDZE Apt Elev	4372 456 464
W17A			

RNAV (GPS) RWY 17

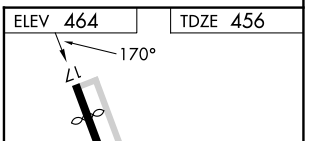
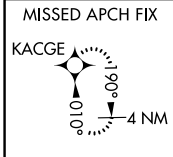
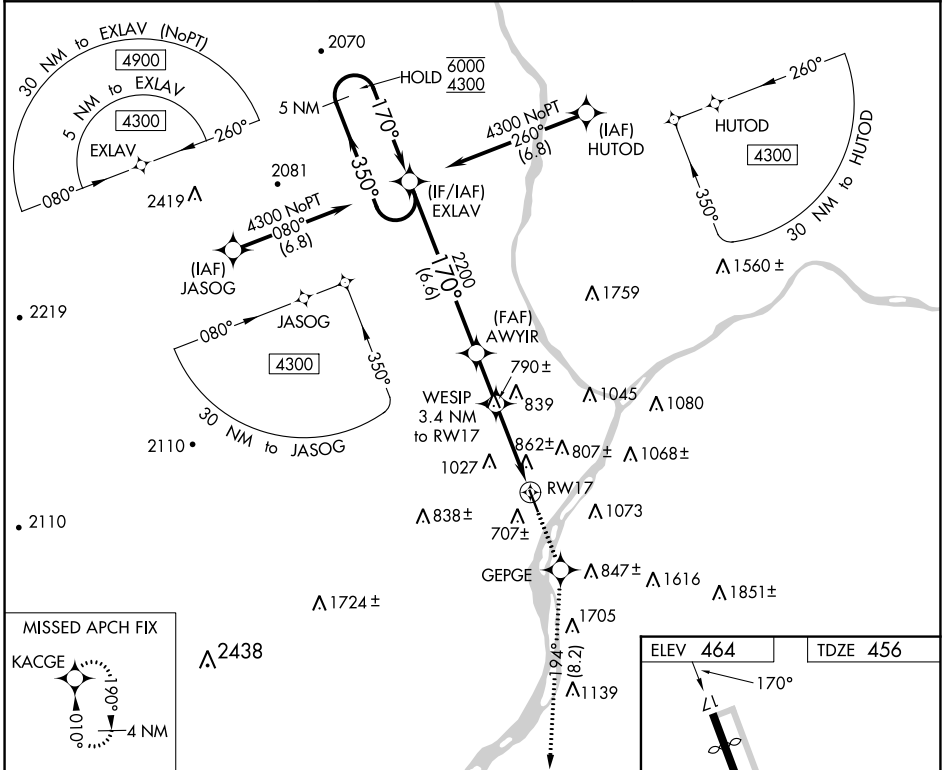
PENN VALLEY (SE/G)

RNP APCH

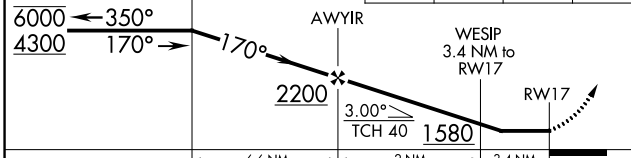
▼ Rwy 17 helicopter visibility reduction below 1 SM NA. Straight-in Rwy 17 NA at night, Circling Rwy 17 NA at night. When Circling to Rwy 35 at night, operational VGSI required, remain on or above VGSI glidepath until threshold.
⚠ -15°C

MISSED APPROACH: Climb to 3900 direct GEPGE and on track 194° to KACGE and hold, continue climb-in-hold to 3900.

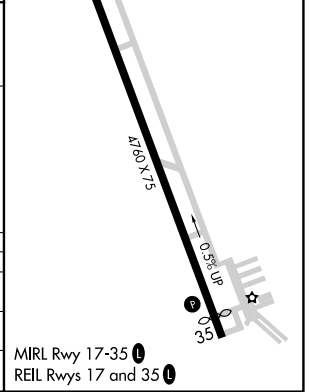
ASOS 123.975	HARRISBURG APP CON 118.25 269.45	UNICOM 122.7 (CTAF) ①
------------------------	--	---------------------------------



5 NM Holding Pattern	EXLAV	3900	GEPGE	KACGE
----------------------	-------	------	-------	-------



CATEGORY	A	B	C	D
LP MDA	1200-1 744 (800-1)	1200-1¼ 744 (800-1¼)	1200-2	744 (800-2)
LNAV MDA	1260-1 804 (800-1)	1260-1¼ 804 (800-1¼)	1260-2½	804 (800-2½)
Ⓢ CIRCLING	1400-1¼	936 (1000-1¼)	1420-3 956 (1000-3)	1600-3 1136 (1200-3)



NE-4, 18 MAY 2023 to 15 JUN 2023

NE-4, 18 MAY 2023 to 15 JUN 2023