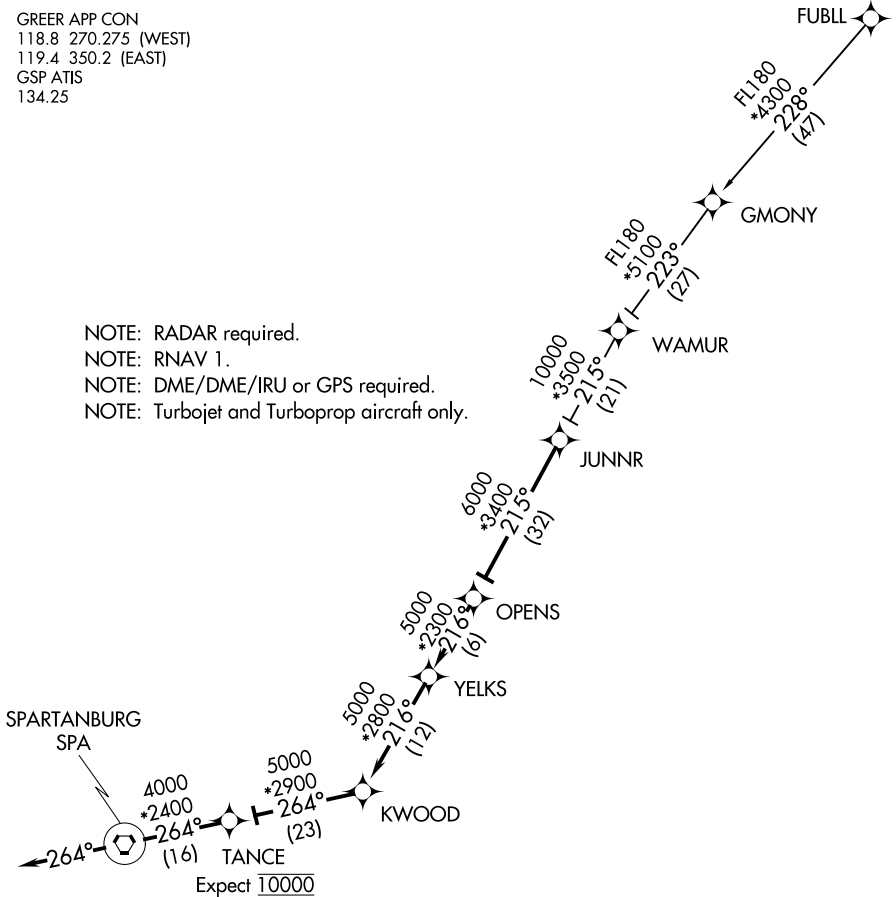


JUNNR THREE ARRIVAL (RNAV)

GREER, SOUTH CAROLINA

GREER APP CON
118.8 270.275 (WEST)
119.4 350.2 (EAST)
GSP ATIS
134.25

- NOTE: RADAR required.
- NOTE: RNAV 1.
- NOTE: DME/DME/IRU or GPS required.
- NOTE: Turbojet and Turboprop aircraft only.



SE-2, 18 MAY 2023 to 15 JUN 2023

SE-2, 18 MAY 2023 to 15 JUN 2023

NOTE: Chart not to scale.

ARRIVAL ROUTE DESCRIPTION

FUBLL TRANSITION (FUBLL.JUNNR3)

From JUNNR on track 215° to OPENS, then on track 216° to YELKS, then on track 216° to KWOOD, then on track 264° to TANCE, then on track 264° to SPA VORTAC, then on heading 264° or as assigned by ATC. Expect RADAR vectors to final approach course.

JUNNR THREE ARRIVAL (RNAV)

GREER, SOUTH CAROLINA