

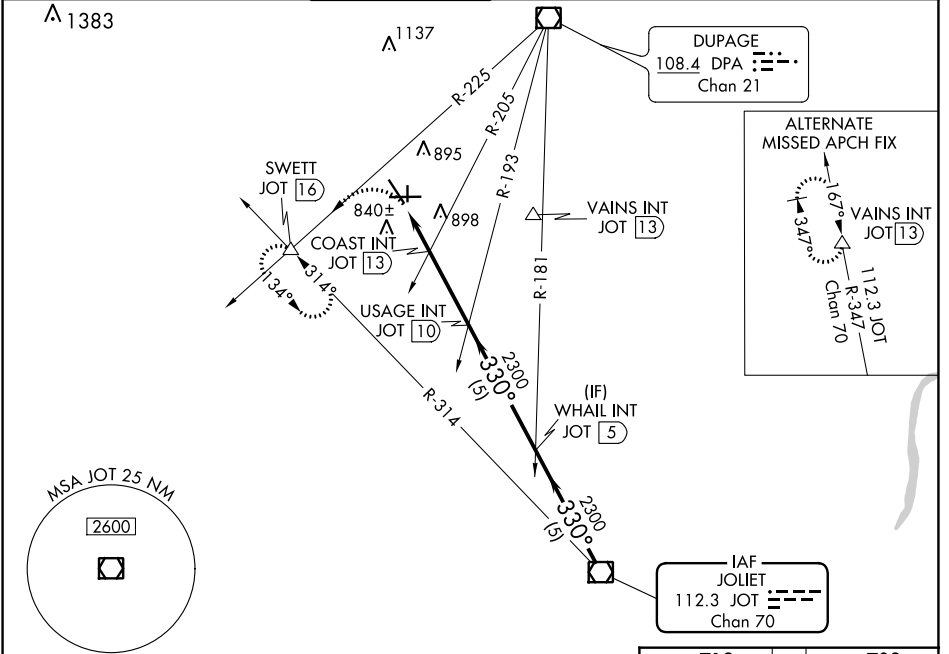
VOR/DME JOT 112.3 Chan 70	APP CRS 330°	Rwy Idg 3198 TDZE 703 Apt Elev 712
---	------------------------	---

VOR RWY 36

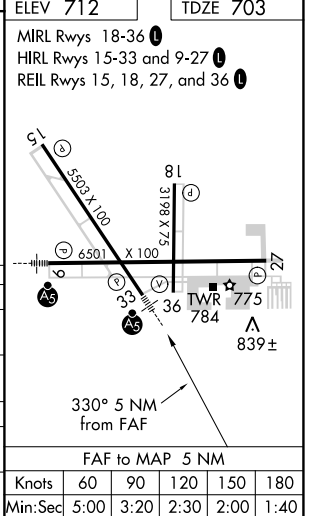
AURORA MUNI (A.R.R.)

MISSED APPROACH: Climbing left turn to 3000 on DPA VOR/DME R-225 to SWETT INT/16 DME and hold.

ATIS 125.85	CHICAGO APP CON 133.5 349.0	AURORA TOWER* 120.6 (CTAF) 0	GND CON 121.7	CLNC DEL 121.7 (When tower closed)	UNICOM 122.95 123.5
-----------------------	---------------------------------------	--	-------------------------	---	-------------------------------



3000	SWETT	USAGE INT	WHAIL INT	JOT
DPA R-225	△	JOT 10	JOT 5	VOR/DME
COAST INT JOT 13		330° 2300		
JOT 15	JOT 13.7	2300		
1360		2.96° TCH 45		
1.3	0.7	3 NM	5 NM	5 NM
CATEGORY	A	B	C	D
S-36	1360-1 657 (700-1)		1360-1¾ 657 (700-1¾)	1360-2 657 (700-2)
C CIRCLING	1360-1 648 (700-1)		1360-1¾ 648 (700-1¾)	1360-2 648 (700-2)
COAST FIX MINIMUMS (DUAL VOR RECEIVERS or DME REQUIRED)				
S-36	1160-1 457 (500-1)		1160-1¼ 457 (500-¼)	1160-1½ 457 (500-½)
C CIRCLING	1200-1 488 (500-1)		1300-1½ 588 (600-½)	1320-2 608 (700-2)



EC-3, 18 MAY 2023 to 15 JUN 2023

EC-3, 18 MAY 2023 to 15 JUN 2023