

WAAS CH <b>48822</b> <b>W27A</b>	APP CRS <b>270°</b>	Rwy Idg TDZE Apt Elev	<b>6460</b> <b>707</b> <b>712</b>
--	------------------------	-----------------------------	---

# RNAV (GPS) RWY 27

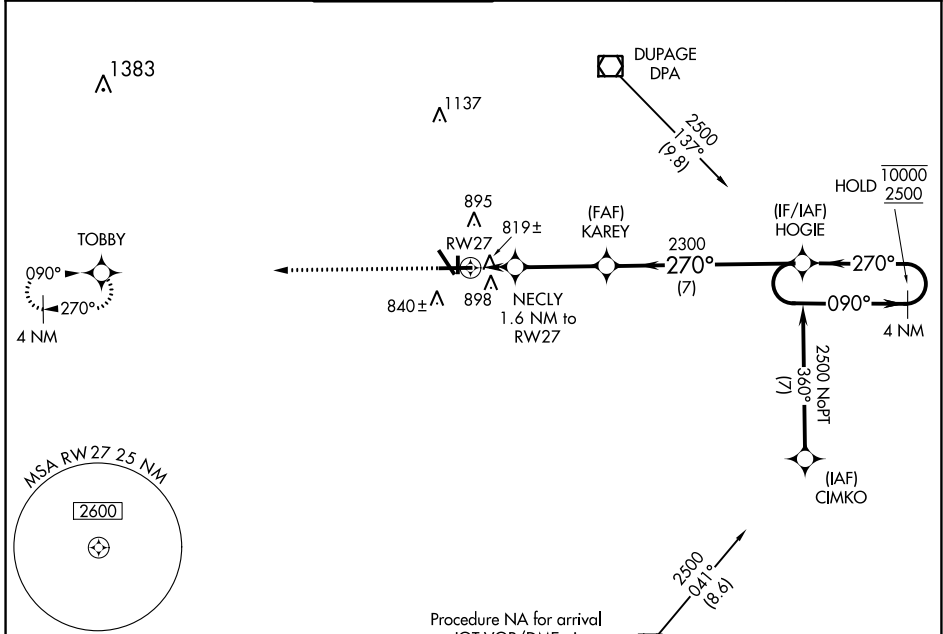
AURORA MUNI (A.R.R.)

RNP APCH - GPS.

For uncompensated Baro-VNAV systems, LNAV/VNAV NA below -16°C or above 54°C.

MISSED APPROACH:  
Climb to 2700 direct  
TOBBY and hold.

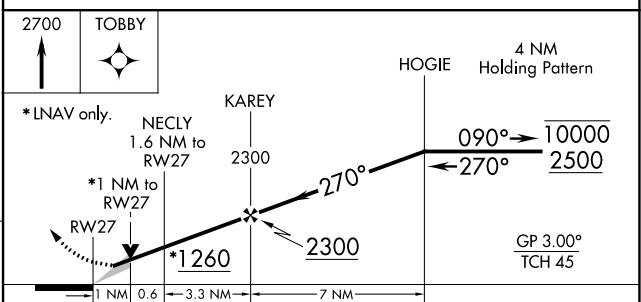
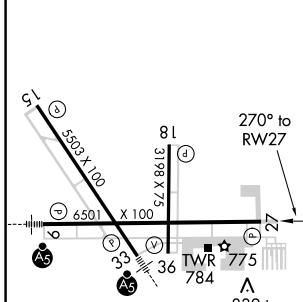
ATIS <b>125.85</b>	CHICAGO APP CON <b>133.5 349.0</b>	AURORA TOWER★ <b>120.6</b> (CTAF) <b>0</b>	GND CON <b>121.7</b>	CLNC DEL <b>121.7</b> (When tower closed)	UNICOM <b>122.95 123.5</b>
-----------------------	---------------------------------------	---	-------------------------	---	-------------------------------



EC-3, 18 MAY 2023 to 15 JUN 2023

EC-3, 18 MAY 2023 to 15 JUN 2023

ELEV <b>712</b>	TDZE <b>707</b>
-----------------	-----------------



CATEGORY	A	B	C	D
LPV DA		907-3/4	200 (200-3/4)	
LNAV/VNAV DA		1002-1	295 (300-1)	
LNAV MDA		1080-1	373 (400-1)	
<input checked="" type="checkbox"/> CIRCLING	1200-1	488 (500-1)	1300-1 1/2 588 (600-1 1/2)	1320-2 608 (700-2)

MIRL Rwy 18-36 **0**  
HIRL Rwy 15-33 and 9-27 **0**  
REIL Rwy 15, 18, 27, and 36 **0**