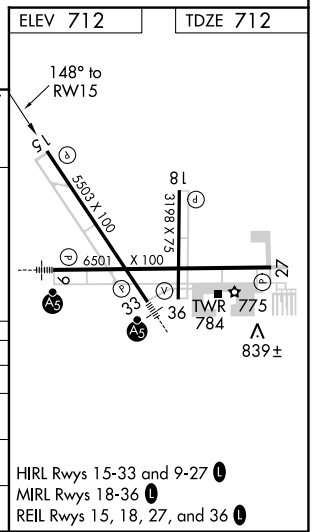
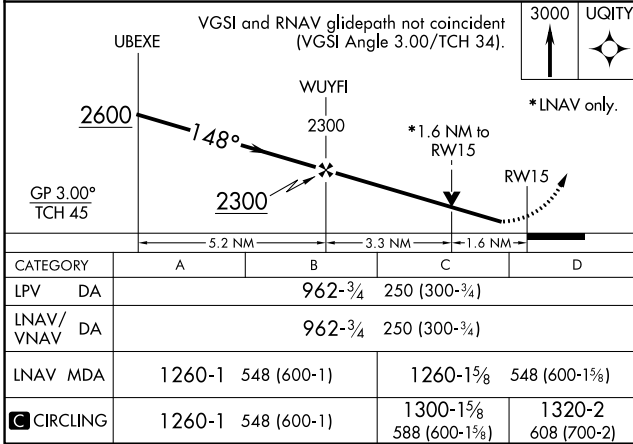
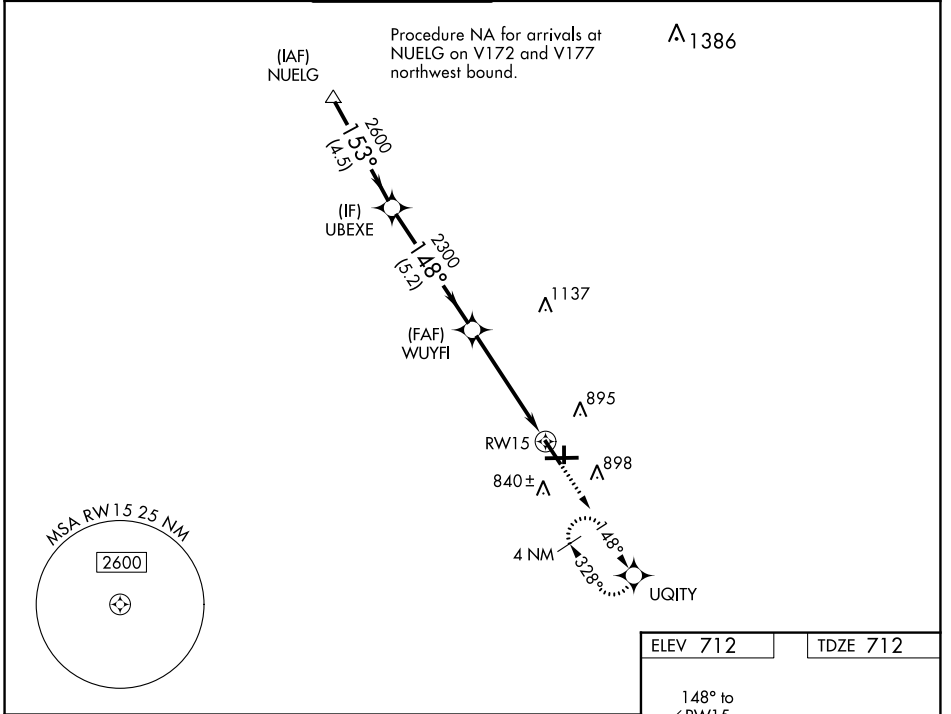


WAAS CH <b>72941</b> <b>W15A</b>	APP CRS <b>148°</b>	Rwy ldg TDZE Apt Elev	<b>5503</b> <b>712</b> <b>712</b>
--	------------------------	-----------------------------	---

# RNAV (GPS) RWY 15

AURORA MUNI (A.R.R.)

RNP APCH - GPS.		MISSED APPROACH: Climb to 3000 direct UQITY and hold, continue climb-in-hold to 3000.			
▼ For uncompensated Baro-VNAV systems, LNAV/VNAV NA below -20°C or above 54°C. Rwy 15 helicopter visibility reduction below ¼ SM NA.					
ATIS <b>125.85</b>	CHICAGO APP CON <b>133.5 349.0</b>	AURORA TOWER* <b>120.6 (CTAF) 0</b>	GND CON <b>121.7</b>	CLNC DEL <b>121.7</b> (When tower closed)	UNICOM <b>122.95 123.5</b>



EC-3, 18 MAY 2023 to 15 JUN 2023

EC-3, 18 MAY 2023 to 15 JUN 2023