

DUBLIN, VIRGINIA

AL-5084 (FAA)

21056

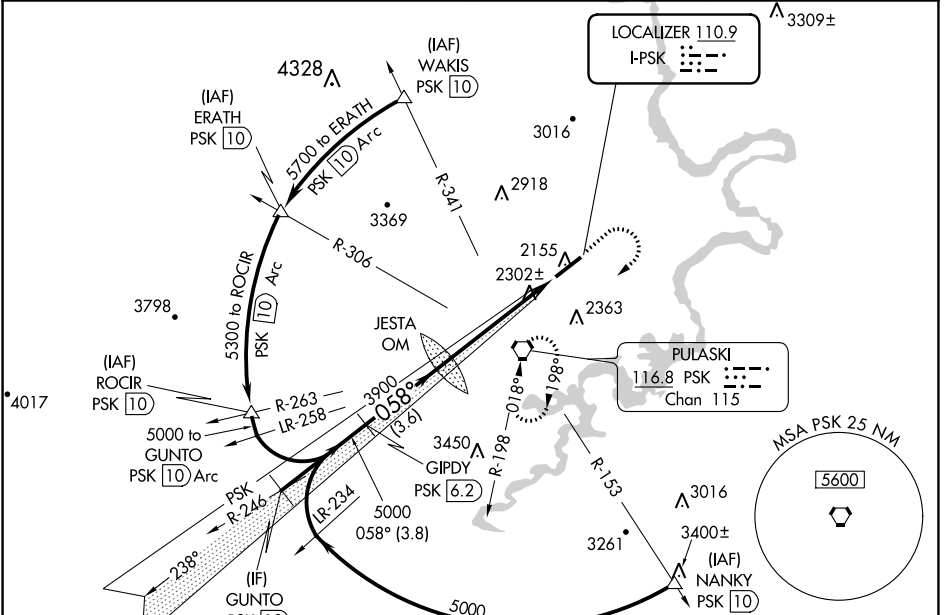
LOC I-PSK 110.9	APP CRS 058°	Rwy Idg TDZE Apt Elev	6201 2105 2105
---------------------------	------------------------	-----------------------------	---

ILS or LOC Y RWY 6

NEW RIVER VALLEY (PSK)

DME required.		MALSR PSK	MISSED APPROACH: Climb to 3000 then climbing right turn to 5000 direct PSK VORTAC and hold, continue climb-in-hold to 5000.
NA	Circling NA for Cat D northwest of Rwy 6-24. Inop table does not apply to S-ILS 6 all Cats and S-LOC 6 Cats A and B. For inop ALS, increase S-LOC 6 Cat C/D visibility to 1 3/8 SM.		

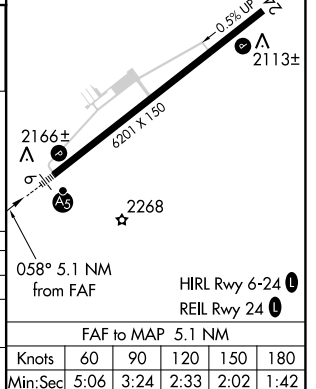
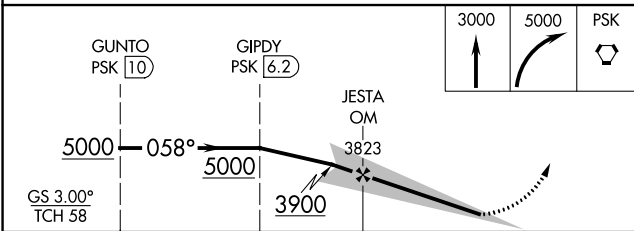
AWOS-3 127.375	ROANOKE APP CON 126.0 339.8	ROANOKE CLNC DEL 121.7	UNICOM 122.7 (CTAF)
--------------------------	---------------------------------------	----------------------------------	-------------------------------



NE-3, 18 MAY 2023 to 15 JUN 2023

NE-3, 18 MAY 2023 to 15 JUN 2023

ELEV 2105	TDZE 2105
-----------	-----------



CATEGORY	A	B	C	D
	S-ILS 6		2305-1	200 (200-1)
S-LOC 6		2560-1	455 (500-1)	
CIRCLING	2620-1 515 (600-1)	2680-1 575 (600-1)	2780-2 675 (700-2)	2780-2 1/4 675 (700-2 1/4)

FACILITY	Knots	60	90	120	150	180
	Min:Sec	5:06	3:24	2:33	2:02	1:42

DUBLIN, VIRGINIA
Orig-B 25FEB21

37°08'N-80°41'W

NEW RIVER VALLEY (PSK)

ILS or LOC Y RWY 6