

RNAV (GPS) RWY 10

CHIPPEWA COUNTY INTL (CIU)

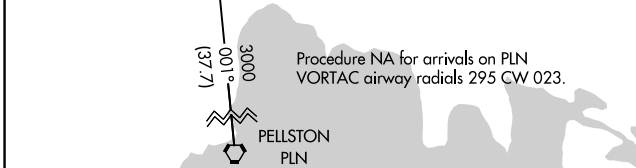
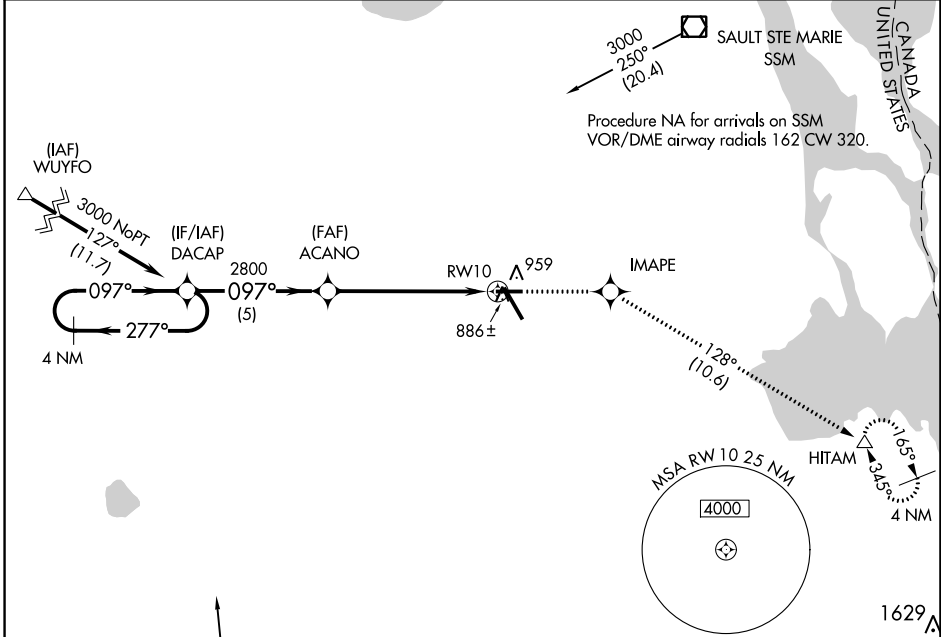
APP CRS	Rwy Idg	5000
097°	TDZE	799
	Apt Elev	799

RNP APCH.

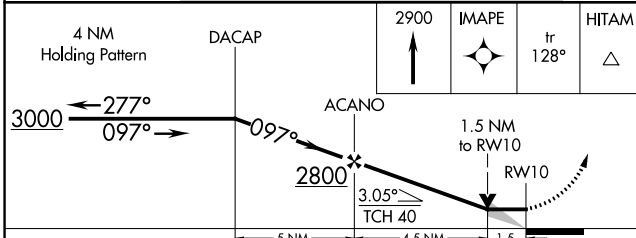
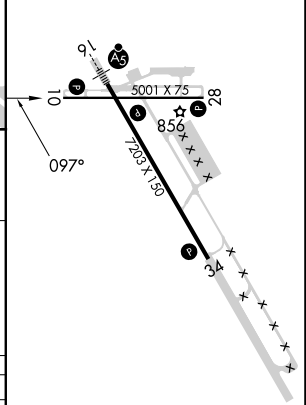
⚠ VDP NA with Sault Ste Marie altimeter setting. When local altimeter setting not received, use Sault Ste Marie Muni/Sanderson Fld altimeter setting; increase all MDA 60 feet, increase LNAV visibility Cat C/D and Circling Cat C ¼ SM.

MISSED APPROACH: Climb to 2900 direct IMAPE and track 128° to HITAM and hold.

AWOS-3PT	TORONTO CENTER	UNICOM
127.575	132.65 344.5	123.0 (CTAF) 0



ELEV 799	D TDZE 799
----------	-------------------



CATEGORY	A	B	C	D
LNAV MDA	1320-1	521 (600-1)	1320-1½	521 (600-1½)
C CIRCLING	1320-1	521 (600-1)	1320-1½	1360 - 2 561 (600-2)

REIL Rwy 10, 28 and 34 **L**

MIRL Rwy 10-28 **L**

HIRL Rwy 16-34 **L**

EC-1, 18 MAY 2023 to 15 JUN 2023

EC-1, 18 MAY 2023 to 15 JUN 2023