

MARYSVILLE, CALIFORNIA

RNAV (GPS) RWY 15

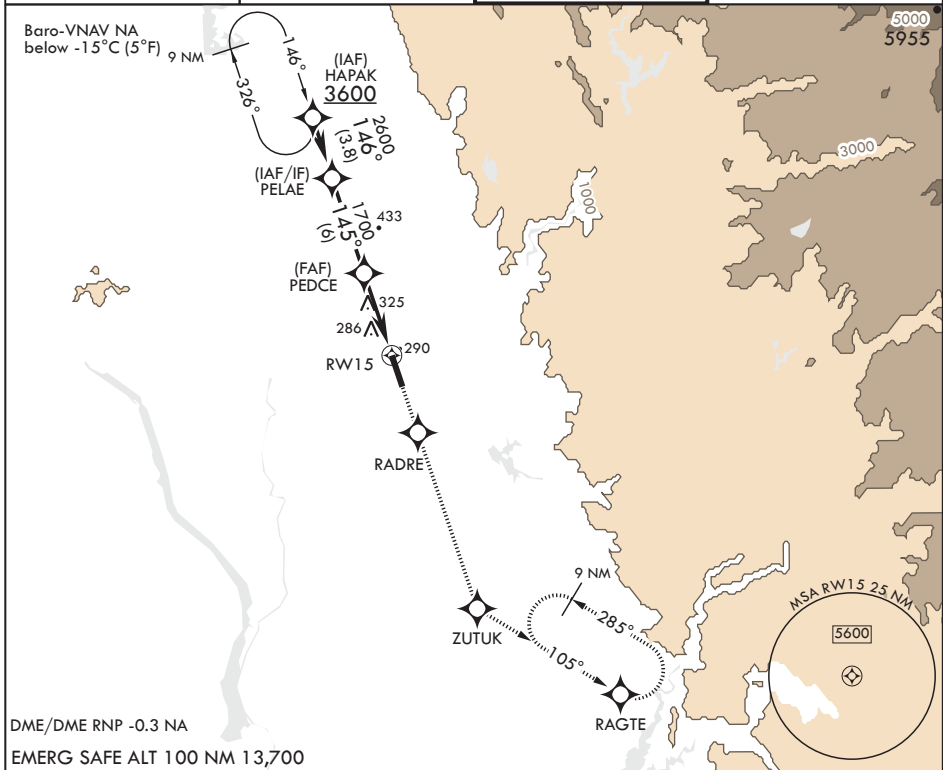
APCH CRS	Rwy Idg	12,001
145°	THRE	113
	Arpt Elev	113

AL-771 (USAF)

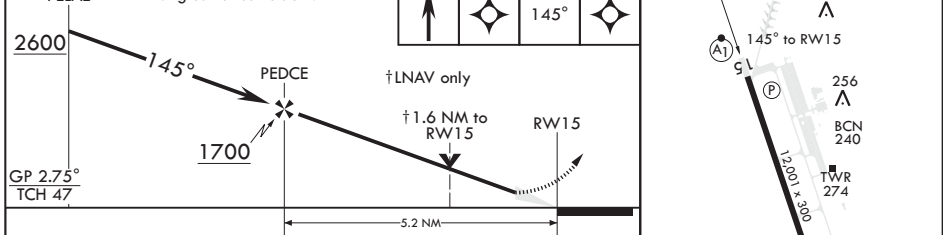
BEALE AFB (KBAB)

<p>▼ * When ALS inop, increase vis to 2 1/2 miles. ** When ALS inop, increase CAT AB RVR to 55 and vis to 1 mile, CAT CDE vis to 1 3/8 miles. *** Circling not authorized E of Rwy 15-33.</p>	<p>ALSF-1</p>	<p>MISSED APPROACH: Climb direct RADRE, then track 145° to ZUTUK, then turn left and track 105° to RAGTE and hold, maintain 3600.</p>
--	---------------	---

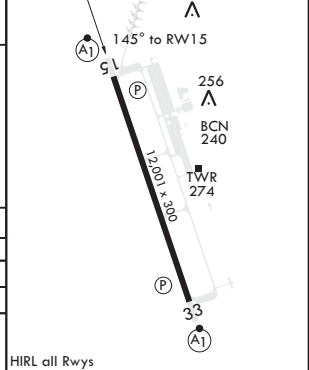
<p>ATIS★</p> <p>124.55 273.5</p>	<p>NORCAL APP CON</p> <p>125.4 259.1</p>	<p>TOWER★</p> <p>119.4 284.75</p>	<p>GND CON</p> <p>121.6 257.75</p>
----------------------------------	--	-----------------------------------	------------------------------------



<p>PELAE</p> <p>2600</p>	<p>VGSI and descent angles not coincident.</p>	<p>3600</p>	<p>RADRE</p>	<p>tr 145°</p>	<p>ZUTUK</p>	<p>ELEV 113</p>	<p>THRE 113</p>
--------------------------	--	-------------	--------------	----------------	--------------	-----------------	-----------------



CATEGORY	A	B	C	D	E
LNAV/VNAV DA*	680-1%		567	(600-1%)	
LNAV MDA**	620/24 507 (600-1/2)		620/55	507	(600-1)
C CIRCLING***	620-1 507 (600-1)	640-1 527 (600-1)	660-1 1/2 547 (600-1 1/2)	680-2 567 (600-2)	840-2 1/2 727 (800-2 1/2)



MARYSVILLE, CALIFORNIA
 Amdt 1 20JUL17

39°08'N - 121°26'W

BEALE AFB (KBAB)

RNAV (GPS) RWY 15

SW-2, 18 MAY 2023 to 15 JUN 2023

SW-2, 18 MAY 2023 to 15 JUN 2023