

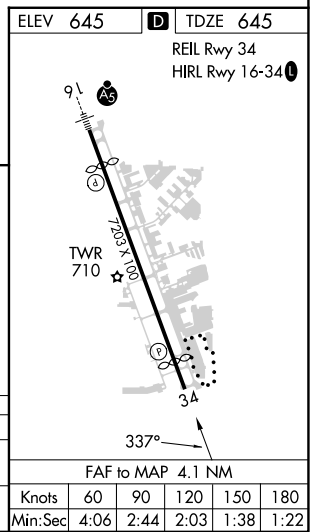
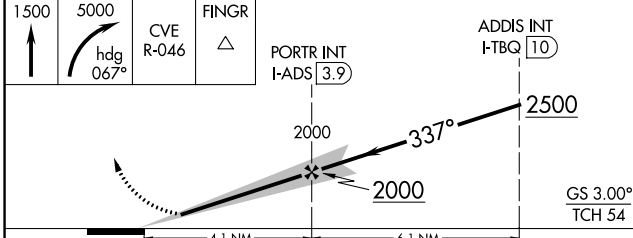
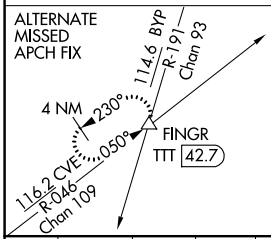
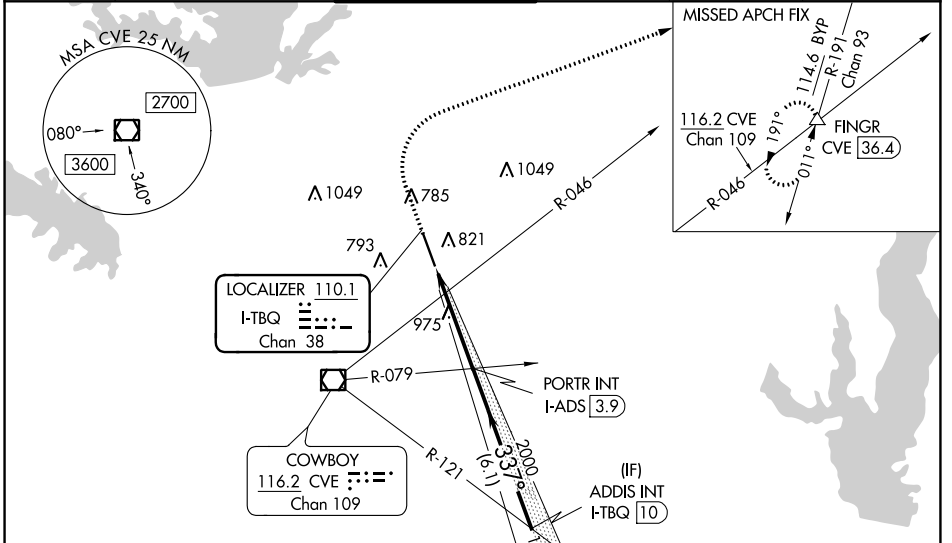
LOC/DME I-TBQ 110.1 Chan 38	APP CRS 337°	Rwy Idg 6431 TDZE 645 Apt Elev 645
---	------------------------	---

ILS or LOC RWY 34

ADDISON (ADS)

RADAR required for procedure entry.		MISSED APPROACH: Climb to 1500 then climbing right turn to 5000 on heading 067° and CVE VOR/DME R-046 to FINGR INT/CVE 36.4 DME and hold.	
<p>▼</p> <p>▲ Rwy 34 helicopter visibility reduction below ¾ SM NA.</p>			

ATIS 133.4	REGIONAL APP CON 124.3 282.275	ADDISON TOWER * 126.0 (CTAF) 0 239.0	GND CON 121.6	CLNC DEL 119.55	UNICOM 122.95
----------------------	--	--	-------------------------	---------------------------	-------------------------



CATEGORY	A	B	C	D
S-ILS 34	895-1 250 (300-1)			
S-LOC 34	1240-1 595 (600-1)	1240-1½ 595 (600-1½)	1240-1¾ 595 (600-1¾)	

SC-2, 18 MAY 2023 to 15 JUN 2023

SC-2, 18 MAY 2023 to 15 JUN 2023