

OKLAHOMA CITY, OKLAHOMA

AL-739 (FAA)

22251

VOR/DME PWA 113.4 Chan 81	APP CRS 348°	Rwy Idg TDZE Apt Elev	6843 1299 1300
---	------------------------	-----------------------------	---

VOR RWY 35R

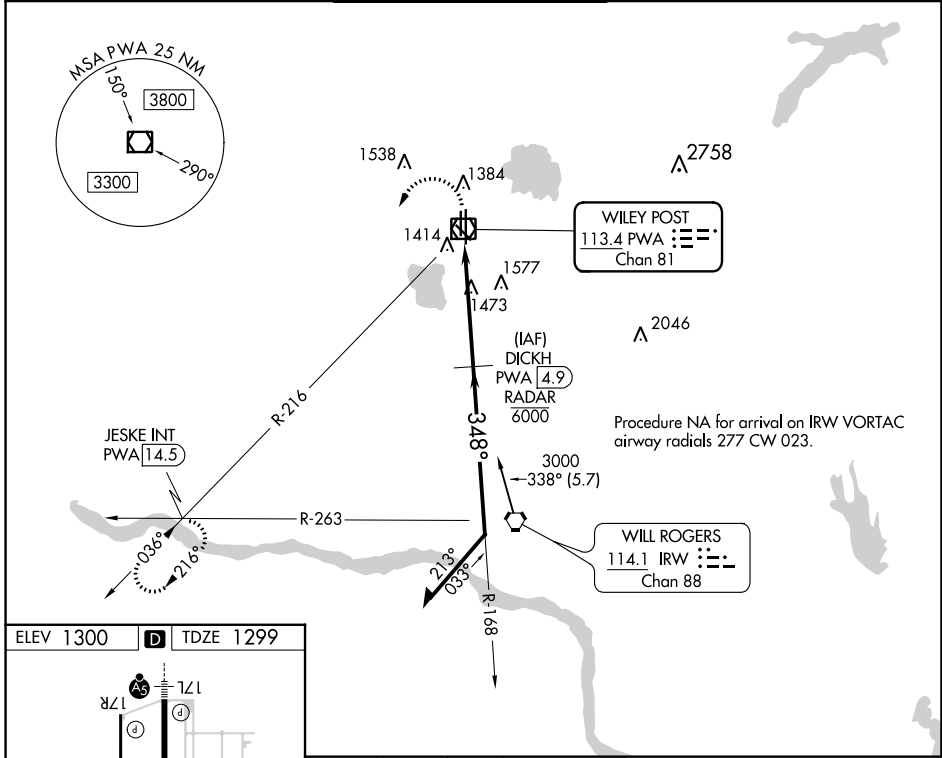
WILEY POST (PWA)

DME or RADAR required.

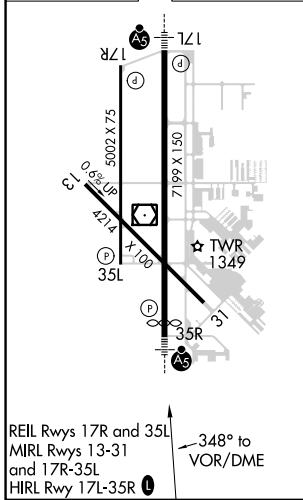


MISSED APPROACH: Climbing left turn to 3000 on heading 196° and PWA R-216 to JESKE INT/PWA 14.5 DME and hold.

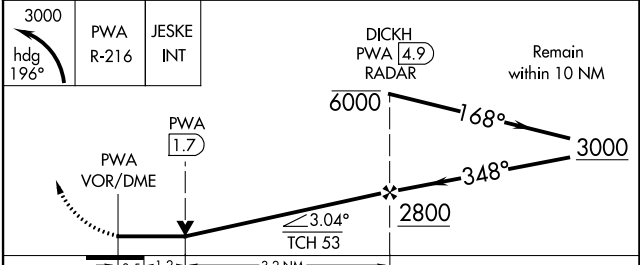
ATIS 128.725	OKE CITY APP CON 124.6 266.8	WILEY POST TOWER ★ 126.9 (CTAF) 306.9	GND CON 121.7	UNICOM 122.95
------------------------	--	---	-------------------------	-------------------------



ELEV 1300	D	TDZE 1299
-----------	----------	-----------



REIL Rwy 17R and 35L
MIRL Rwy 13-31
and 17R-35L
HIRL Rwy 17L-35R
348° to VOR/DME



CATEGORY	A	B	C	D
S-35R	1740-1/2	441 (500-1/2)	1740-7/8	441 (500-7/8)
C CIRCLING	1780-1	480 (500-1)	1880-1 1/2 580 (600-1 1/2)	1880-2 580 (600-2)

OKLAHOMA CITY, OKLAHOMA
Amdt 4 24MAR22

35°32'N-97°39'W

WILEY POST (PWA) VOR RWY 35R

SC-1, 18 MAY 2023 to 15 JUN 2023

SC-1, 18 MAY 2023 to 15 JUN 2023