

LOC I-PWA <b>110.15</b>	APP CRS <b>175°</b>	Rwy Idg TDZE Apt Elev	<b>6844</b> <b>1291</b> <b>1300</b>
----------------------------	------------------------	-----------------------------	---

# ILS or LOC RWY 17L

WILEY POST (PWA)

DME or RADAR required.

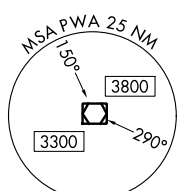
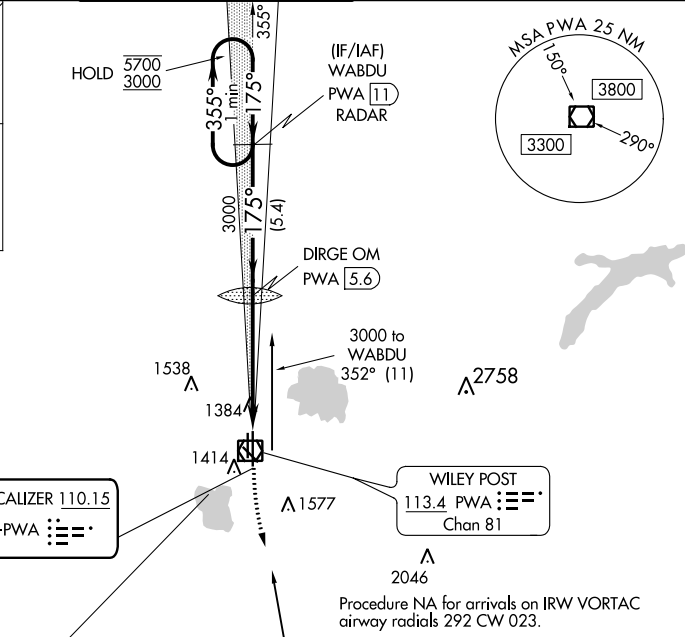
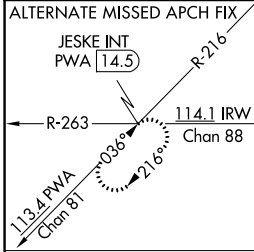


MALSR



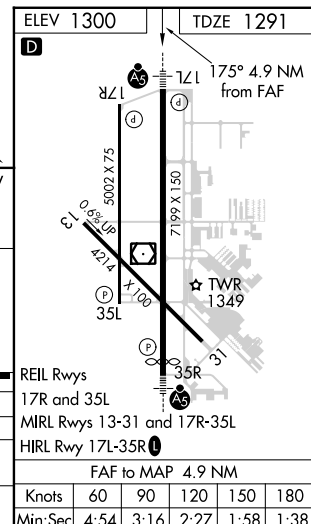
MISSED APPROACH: Climb to 1800 then climbing left turn to 3000 direct IRW VORTAC and hold.

ATIS <b>128.725</b>	OKE CITY APP CON <b>124.6 266.8</b>	WILEY POST TOWER * <b>126.9 (CTAF) 0 306.9</b>	GND CON <b>121.7</b>	UNICOM <b>122.95</b>
------------------------	--	---	-------------------------	-------------------------



Procedure NA for arrivals on IRW VORTAC airway radials 292 CW 023.

One Minute Holding Pattern	WABDU PWA (11) RADAR	DIRGE OM PWA (5.6)	1800	3000	IRW
5700 ← 355°	175° →	2904	PWA (1.6)	PWA (0.7)	
3000	175° →	3000			
GS 3.00° TCH 54		5.4 NM	4 NM	0.9 NM	
CATEGORY	A	B	C	D	
S-ILS 17L		1491-1/2	200 (200-1/2)		
S-LOC 17L	1640-1/2	349 (400-1/2)	1640-5/8	349 (400-5/8)	
CIRCLING	1780-1	480 (500-1)	1880-1/2	1880-2	
			580 (600-1/2)	580 (600-2)	



SC-1, 18 MAY 2023 to 15 JUN 2023

SC-1, 18 MAY 2023 to 15 JUN 2023