

VOR/DME LOZ <b>116.55</b> Chan <b>112 (Y)</b>	APP CRS <b>025°</b>	Rwy ldg <b>5000</b> TDZE <b>1212</b> Apt Elev <b>1212</b>
---	------------------------	---

# VOR RWY 6

LONDON/CORBIN/MAGEE (LOZ)

**⚠** When local altimeter setting not received, use Somerset altimeter setting: increase all MDAs 100 feet and S-6 Cat C/D and Circling Cat C/D visibility ¼ SM. Night landing: Rwy 6 NA.

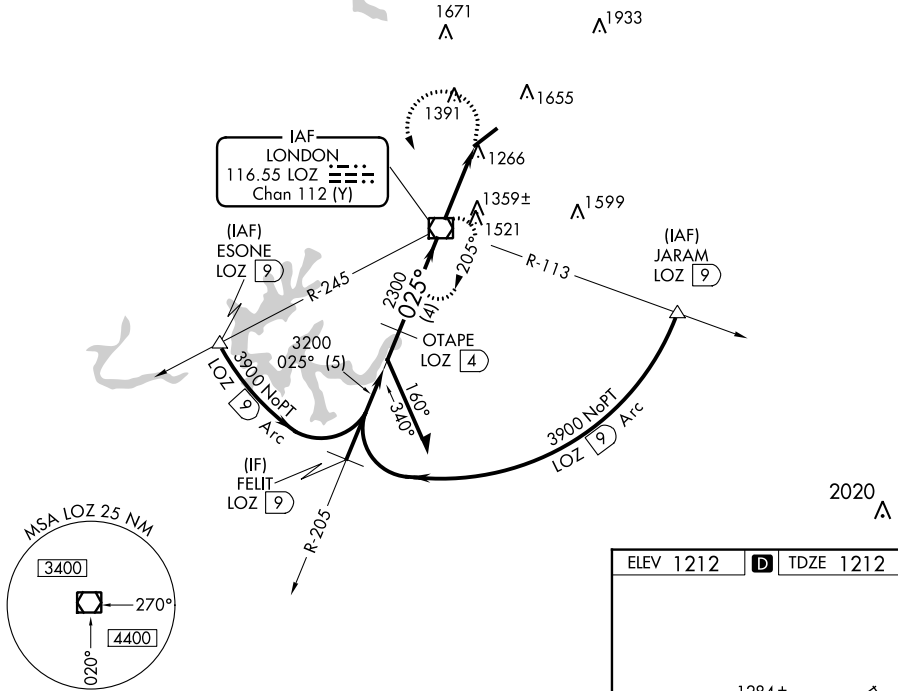
**MISSED APPROACH:** Climbing left turn to 4000 direct LOZ VOR/DME and hold, continue climb-in-hold to 4000.

ASOS  
**119.075**

INDIANAPOLIS CENTER  
**124.625 371.925**

UNICOM  
**123.0 (CTAF) 0**

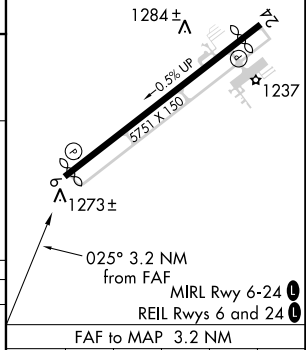
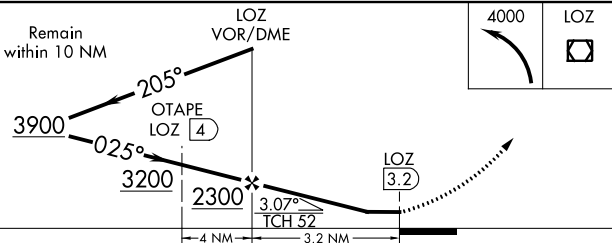
## DME REQUIRED



SE-1, 18 MAY 2023 to 15 JUN 2023

SE-1, 18 MAY 2023 to 15 JUN 2023

ELEV 1212 **D** TDZE 1212



CATEGORY	A	B	C	D	Knots	60	90	120	150	180
S-6	1620-1	408 (500-1)	1620-1¼	408 (500-1¼)	Min:Seq	3:12	2:08	1:36	1:17	1:04
CIRCLING	1780-1 568 (600-1)	2040-1¼ 828 (900-1¼)	2040-2½ 828 (900-2½)	2040-2¾ 828 (900-2¾)	FAF to MAP 3.2 NM					

# VOR RWY 6