

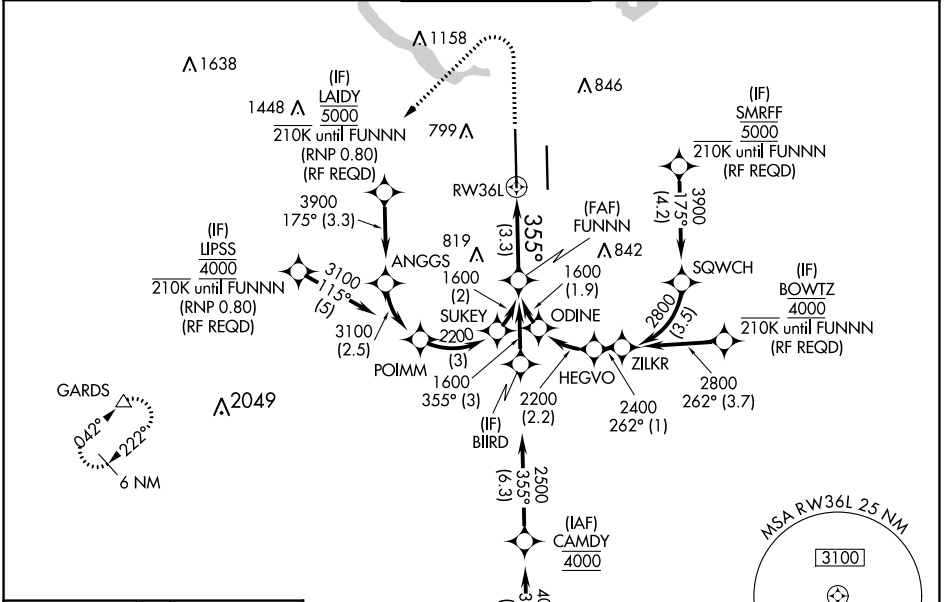
# RNAV (RNP) Z RWY 36L

AUSTIN-BERGSTROM INTL (AUS)

APP CRS	Rwy Idg	<b>12250</b>
<b>355°</b>	TDZE	<b>496</b>
	Apt Elev	<b>542</b>

RNP AR APCH. RADAR required.		MALS	MISSED APPROACH: Climb to 1700 then climbing left turn to 3500 direct GARDS and hold.
<p>Simultaneous approach authorized. For uncompensated Baro-VNAV systems, procedure NA below -5°C or above 54°C. For inop ALS, increase RNP 0.11 all Cats visibility to RVR 4500 and RNP 0.30 all Cats visibility to RVR 5500.</p>			

D-ATIS	AUSTIN APP CON	AUSTIN TOWER	GND CON	CLNC DEL	CPDLC
<b>124.4</b>	<b>127.225 317.65 (EAST)</b> <b>120.875 270.25 (SOUTH)</b> <b>119.0 370.85 (WEST)</b>	<b>121.0 281.5</b>	<b>121.9 348.6</b>	<b>125.5 263.0</b>	

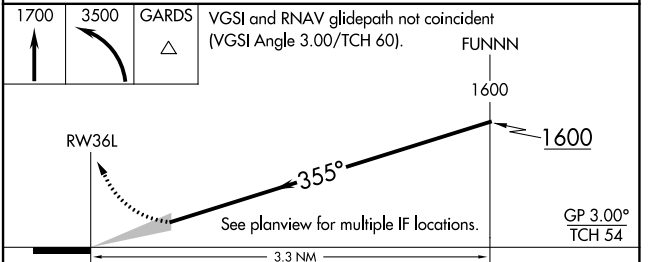
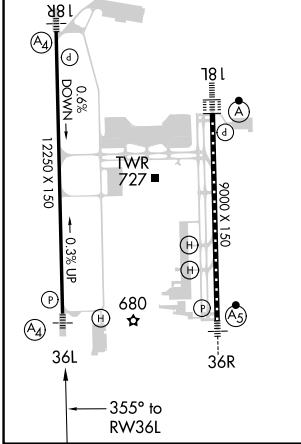


SC-3, 18 MAY 2023 to 15 JUN 2023

SC-3, 18 MAY 2023 to 15 JUN 2023

ELEV	<b>542</b>	<b>D</b>	TDZE	<b>496</b>
------	------------	----------	------	------------

HIRL Rwy 18L-36R and 18R-36L  
TDZ/CL Rwy 18L and 36R



CATEGORY	A	B	C	D
RNP 0.11 DA		758/40	262 (300-¾)	
RNP 0.30 DA		858/40	362 (400-¾)	

## AUTHORIZATION REQUIRED