

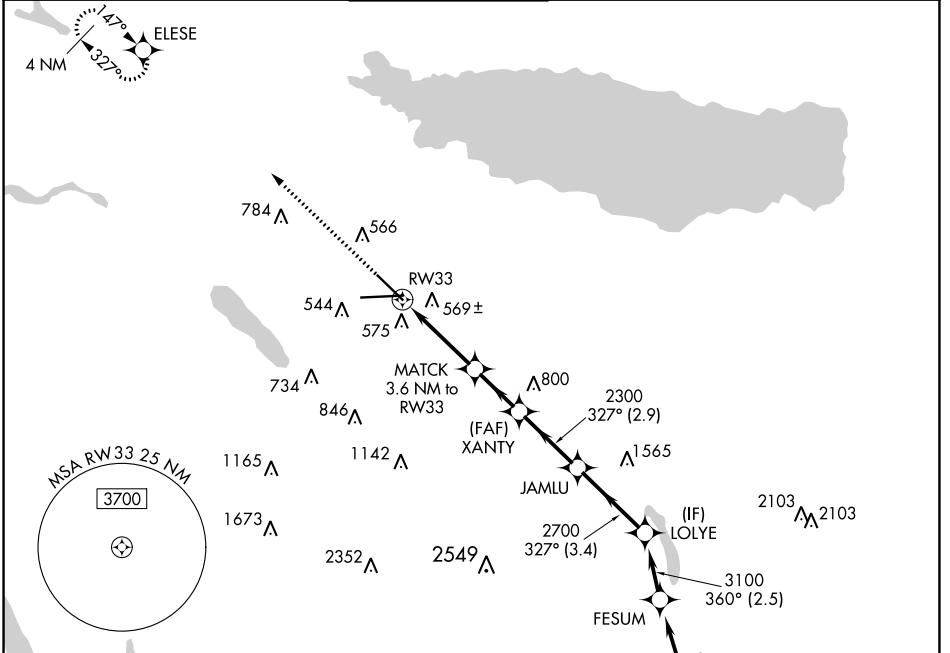
WAAS CH 81823 W33A	APP CRS 327°	Rwy Idg TDZE Apt Elev	7500 409 421
--	------------------------	-----------------------------	---

RNAV (GPS) RWY 33

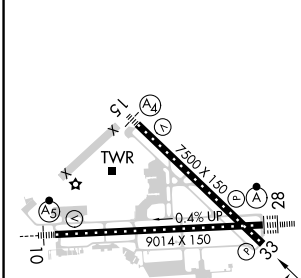
SYRACUSE HANCOCK INTL (SYR)

RNP APCH.		MISSED APPROACH: Climb to 3000 direct ELESE and hold.	
<p>▼ Rwy 33 helicopter visibility reduction below 3/4 SM NA. For uncompensated</p> <p>▲ Baro-VNAV systems, LNAV/VNAV NA below -20°C or above 54°C.</p>			

ATIS 124.225	SYRACUSE APP CON 126.125 269.125	SYRACUSE TOWER 120.3 239.0	GND CON 121.7 348.6	CLNC DEL 125.05 257.775
------------------------	--	--------------------------------------	-------------------------------	-----------------------------------



ELEV 421	D	TDZE 409
----------	----------	----------



3000	ELESE	MATCH	XANTY	JAMLU	LOLYE
↑	◆	3.6 NM to RWY33	2300	2700	3100
*LNAV only	*1.1 NM to RWY33				GP 3.00°
		1580*	2300		TCH 50
	1.1 NM	2.5 NM	2.2 NM	2.9 NM	3.4 NM

CATEGORY	A	B	C	D
LPV DA		715/45	306 (300-7/8)	
LNAV/VNAV DA		882-1 3/8	473 (500-1 3/8)	
LNAV MDA	820/55	411 (400-1)	820/60	411 (400-1 1/4)
<input checked="" type="checkbox"/> CIRCLING	900-1 479 (500-1)	920-1 499 (500-1)	1020-1 1/2 599 (600-1 1/2)	1180-2 1/2 759 (800-2 1/2)

NE-2, 18 MAY 2023 to 15 JUN 2023

NE-2, 18 MAY 2023 to 15 JUN 2023