

LOC/DME I-SYR 109.9 Chan 36	APP CRS 280°	Rwy Idg 9014 TDZE 413 Apt Elev 421
---	------------------------	---

ILS RWY 28 (SA CAT I)

SYRACUSE HANCOCK INTL (SYR)

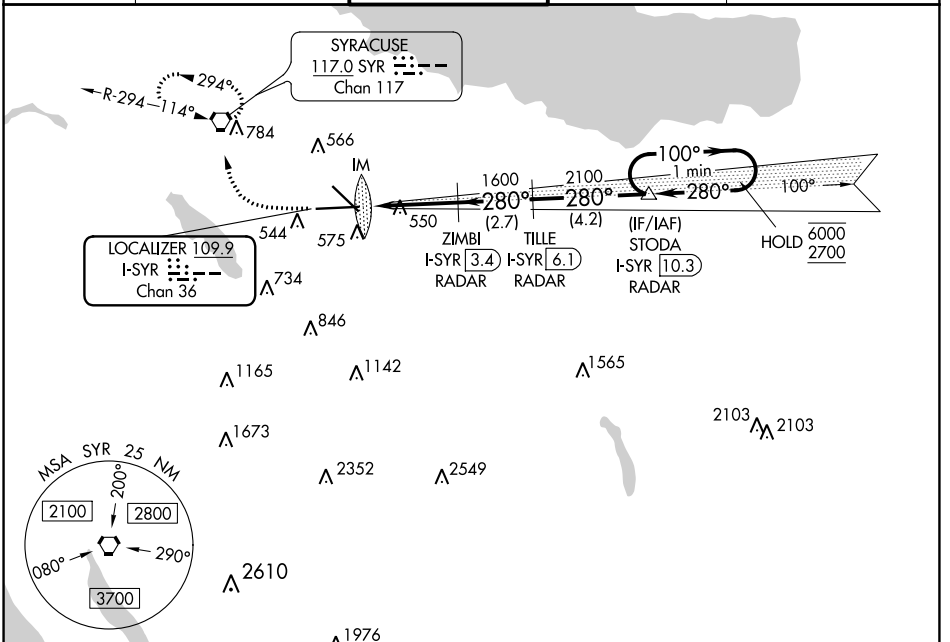
DME or RADAR required.

Requires specific OPSPEC, MSPEC, or LOA approval and use of HUD to DH.

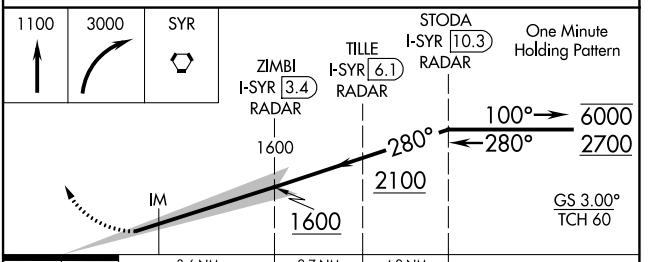
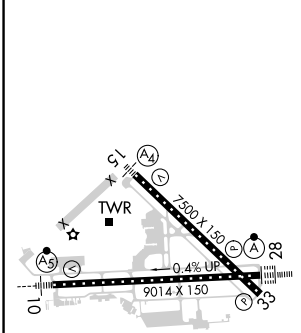
ALSF-2

MISSED APPROACH: Climb to 1100 then climbing right turn to 3000 direct SYR VORTAC and hold, continue climb-in-hold to 3000.

ATIS 124.225	SYRACUSE APP CON 126.125 269.125	SYRACUSE TOWER 120.3 239.0	GND CON 121.7 348.6	CLNC DEL 125.05 257.775
------------------------	--	--------------------------------------	-------------------------------	-----------------------------------



ELEV 421	D	TDZE 413
----------	----------	----------



CATEGORY	A	B	C	D
S-ILS 28	RA 150/14 150 DA 563			

SA CATEGORY I ILS - SPECIAL AIRCREW & AIRCRAFT CERTIFICATION REQUIRED

TDZ/CL Rwy 28
HIRL Rwy 10-28 and 15-33

NE-2, 18 MAY 2023 to 15 JUN 2023

NE-2, 18 MAY 2023 to 15 JUN 2023