


VORTAC CEC 109.0 Chan 27	APP CRS 131°	Rwy Idg 5002 TDZE 60 Apt Elev 61
--	------------------------	---

VOR/DME RWY 12

JACK MC NAMARA FLD (CEC)

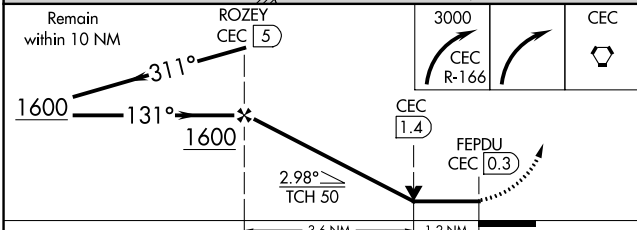
▽ VDP NA with Brookings altimeter setting. When local altimeter setting not received, use Brookings altimeter setting and increase all MDA 100 feet; increase S-12 Cat C/D, and Circling Cat D visibility ¼ mile, and Circling Cat C visibility ½ mile. For inop MALSRS, increase S-12 Cats A/B visibility to 1 mile, Cats C/D visibility to 1½ mile. For inop MALSRS when using Brookings altimeter setting, increase S-12 Cats A/B visibility to 1 mile, Cats C/D visibility to 1½ mile. Night Landing: Rwy 18, 30 NA. Night Landing: Rwy 36 operational VGSJ required, remain on or above VGSJ glidepath until threshold.

MALSRS

MISSED APPROACH:
 Climbing right turn to 3000 on CEC VORTAC R-166 then right turn direct CEC VORTAC and hold.

ASOS 119.925	SEATTLE CENTER 124.85 306.3	UNICOM 122.8 (CTAF)
------------------------	---------------------------------------	-------------------------------



ELEV 61	D TDZE 60
---------	------------------



HIRL Rwy 12-30 **1**
 REIL Rws 18, 30 and 36 **1**
 MIRL Rwy 18-36 **1**

CATEGORY	A	B	C	D
S-12	480-¾ 420 (500-¾)		480-1 420 (500-1)	
C CIRCLING	540-1 479 (500-1)		640-1½ 579 (600-1½)	640-2 579 (600-2)

SW-2, 18 MAY 2023 to 15 JUN 2023

SW-2, 18 MAY 2023 to 15 JUN 2023