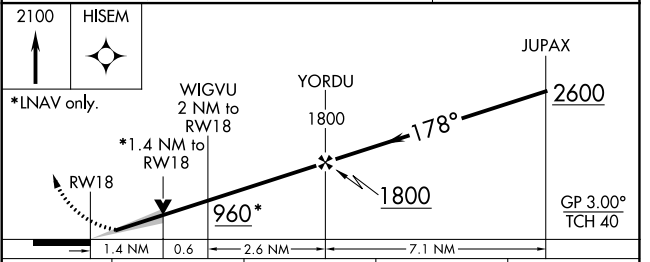
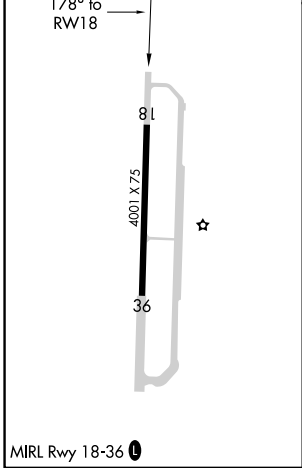
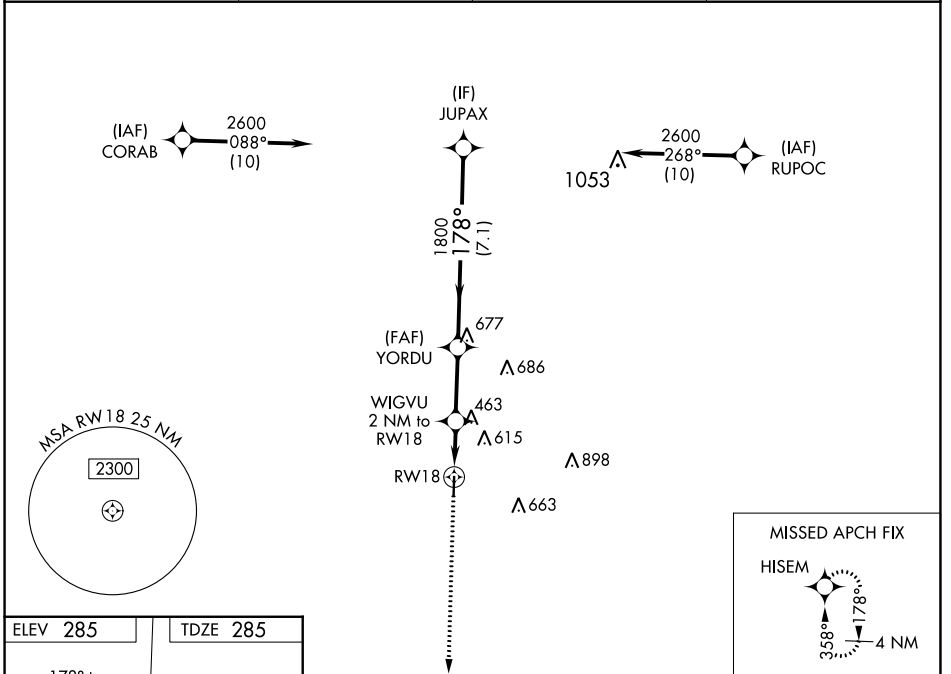


WAAS CH 50522 W18A	APP CRS 178°	Rwy Idg TDZE Apt Elev	4001 285 285
--	------------------------	-----------------------------	---

RNAV (GPS) RWY 18

HEARNE MUNI (LHB)

RNP APCH.		MISSED APPROACH: Climb to 2100 direct HISEM and hold.	
<p>▲ Baro-VNAV and VDP NA when using College Station altimeter setting. For uncompensated Baro-VNAV systems, LNAV/VNAV NA below -15°C or above 54°C.</p>			
AWOS-3 118.675	HOUSTON APP CON 134.3 360.85	CTAF 122.9	123.3 0



CATEGORY	A	B	C	D
LPV DA	485- $\frac{3}{4}$	200 (200- $\frac{3}{4}$)		NA
LNAV/VNAV DA	583-1	298 (300-1)		NA
LNAV MDA	780-1	495 (500-1)	780-1 $\frac{3}{8}$ 495 (500-1 $\frac{3}{8}$)	NA
CIRCLING	800-1 515 (600-1)	920-1 635 (700-1)	1020-2 735 (800-2)	NA

SC-5, 23 MAR 2023 to 20 APR 2023

SC-5, 23 MAR 2023 to 20 APR 2023