

WAAS CH 97735 W18A	APP CRS 182°	Rwy Idg TDZE Apt Elev	4000 936 936
--	------------------------	-----------------------------	---

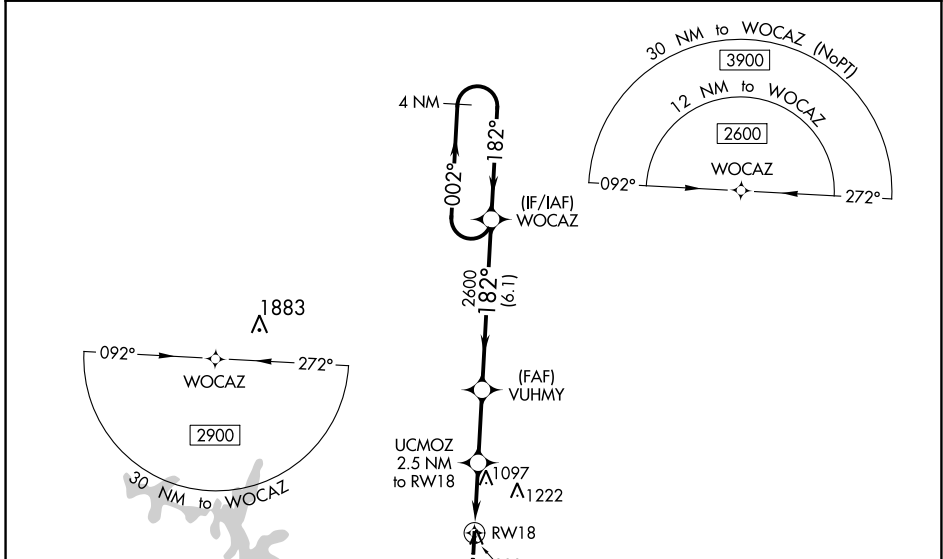
RNAV (GPS) RWY 18

WARSAW MUNI (R.A.W)

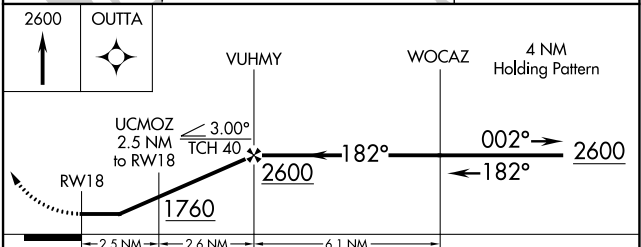
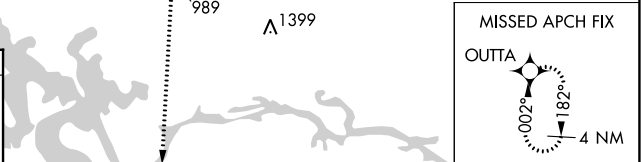
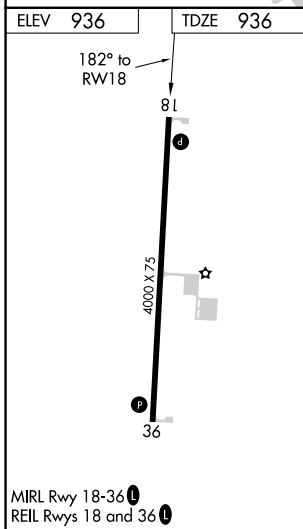
NA DME/DME RNP-0.3 NA. Helicopter visibility reduction below 1 SM NA. When local altimeter setting not received, use Clinton altimeter setting and increase all MDA 60 feet. Increase LP/LNAV Cat C/D visibility to 1 $\frac{3}{8}$ mile, and Circling Cat C/D visibility $\frac{1}{4}$ mile.

MISSED APPROACH: Climb to 2600 direct OUTTA and hold.

AWOS-3PT 118.325	WHITEMAN APP CON * 127.45 284.0	CTAF 122.9
----------------------------	---	----------------------



ELEV 936	TDZE 936
----------	----------



CATEGORY		A	B	C	D
LP	MDA	1320-1	384 (400-1)	1320-1 $\frac{1}{8}$	384 (400-1 $\frac{1}{8}$)
	LNAV MDA	1360-1	424 (500-1)	1360-1 $\frac{1}{4}$	424 (500-1 $\frac{1}{4}$)
C	CIRCLING	1360-1 424 (500-1)	1400-1 464 (500-1)	1580-1 $\frac{3}{4}$ 644 (700-1 $\frac{3}{4}$)	1580-2 644 (700-2)

NC-3, 23 MAR 2023 to 20 APR 2023

NC-3, 23 MAR 2023 to 20 APR 2023