

WAAS CH <b>62838</b> <b>W05A</b>	APP CRS <b>051°</b>	Rwy Idg TDZE <b>954</b> Apt Elev <b>964</b>	<b>4003</b>
--	------------------------	---	-------------

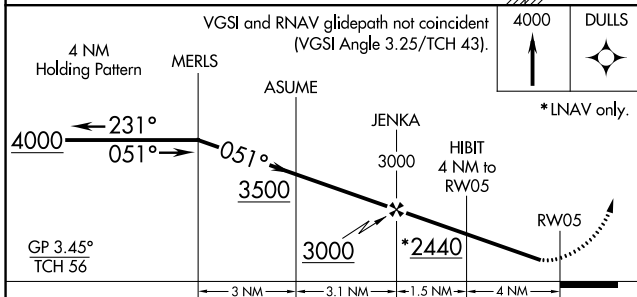
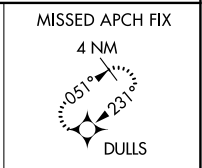
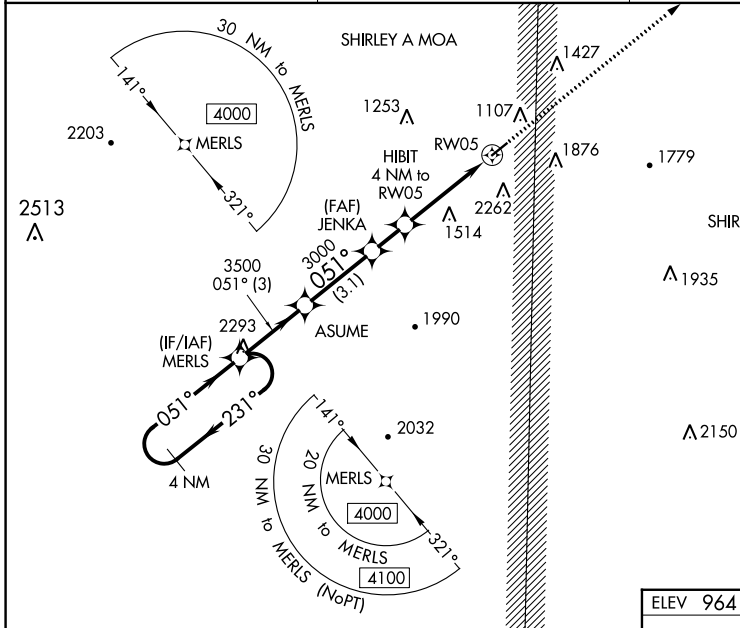
# RNAV (GPS) RWY 5

SEARCY COUNTY (4A5)

**▽** DME/DME RNP-0.3 NA. Circling NA SE of Rwy 5-23. Night Landing: Rwy 23 NA.  
**△NA** Baro-VNAV NA. Use Flippin altimeter setting; when not received, use Harrison altimeter setting and increase all Cats LPV DA to 1396 and visibility 1/8 mile. LNAV/VNAV all Cats DA to 1981, and all MDA 60 feet. Helicopter visibility reduction below 3/4 SM NA.

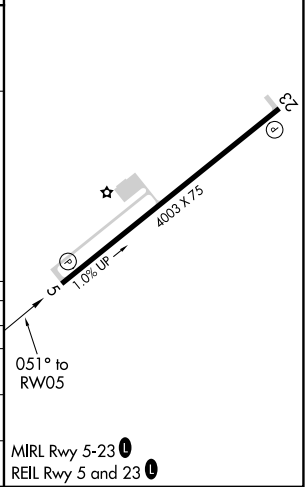
**MISSED APPROACH:**  
Climb to 4000 direct DULLS and hold.

FLP AWOS-3 <b>132.075</b>	MEMPHIS CENTER <b>126.85 281.55</b>	CTAF <b>122.9</b>
------------------------------	--	----------------------



ELEV 964	TDZE 954
----------	----------

CATEGORY	A	B	C	D
LPV DA	1353-1¼	399 (400-1¼)		NA
LNAV/VNAV DA	1938-3	984 (1000-3)		NA
LNAV MDA	1920-1¼ 966 (1000-1¼)	1920-1½ 966 (1000-1½)	1920-3 966 (1000-3)	NA
<b>☐</b> CIRCLING	1920-1¼ 956 (1000-1¼)	1920-1½ 956 (1000-1½)	1920-3 956 (1000-3)	NA



SC-1, 23 MAR 2023 to 20 APR 2023

SC-1, 23 MAR 2023 to 20 APR 2023