

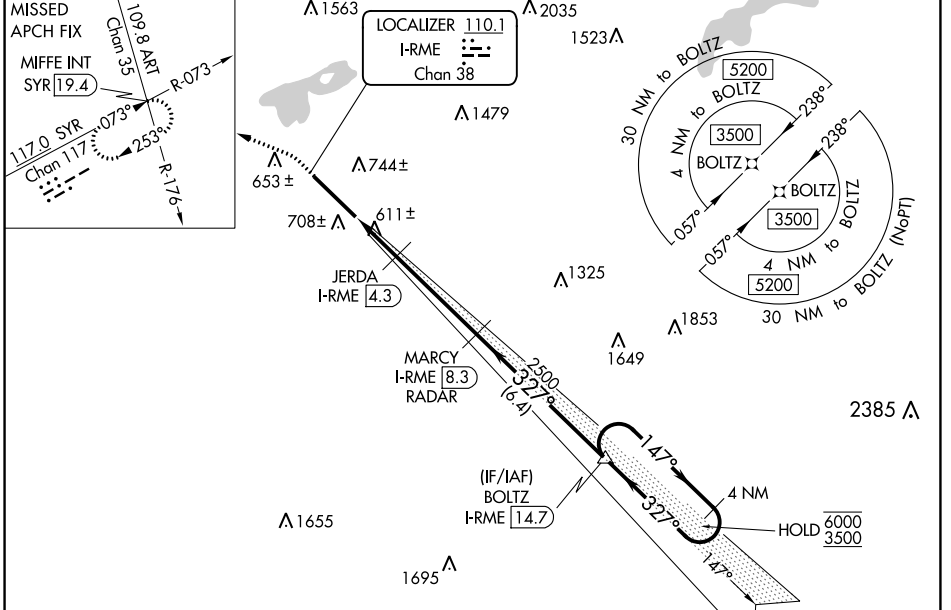
LOC/DME I-RME <b>110.1</b> Chan <b>38</b>	APP CRS <b>327°</b>	Rwy Idg <b>11820</b> TDZE <b>498</b> Apt Elev <b>504</b>
---	------------------------	--

# ILS or LOC RWY 33

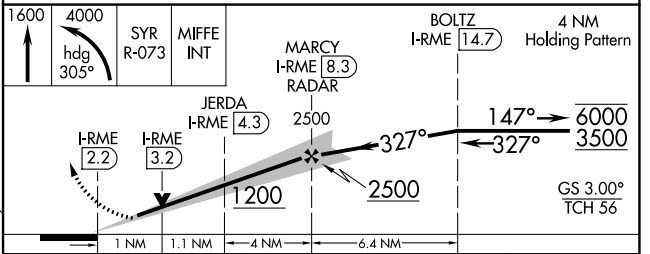
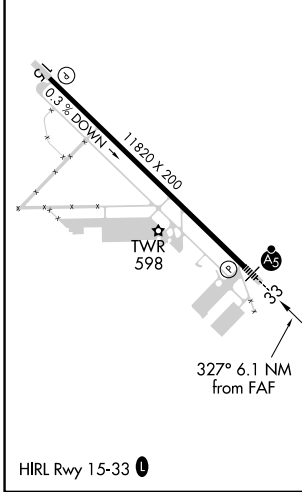
GRIFFISS INTL (RME)

RNP APCH - GPS.	MALSR	MISSED APPROACH: Climb to 1600 then climbing left turn to 4000 on heading 305° and on SYR VORTAC R-073 to MIFFE INT/SYR 19.4 DME and hold.
<p>▼ Circling NA southwest of Rwy 15-33. ▲ Rwy 33 helicopter visibility reduction below ¼ SM NA. Inop table does not apply.</p>		

ATIS <b>118.7</b>	SYRACUSE APP CON <b>127.425 290.45</b>	GRIFFISS TOWER * <b>118.1 (CTAF) 0 291.7</b>	GND CON <b>121.9</b>	UNICOM <b>122.95</b>
----------------------	---	---	-------------------------	-------------------------



ELEV <b>504</b>	<b>D</b>	TDZE <b>498</b>
-----------------	----------	-----------------



CATEGORY	A	B	C	D
S-ILS 33		784-7/8	286 (300-7/8)	
S-LOC 33	880-1	382 (400-1)	880-1 1/8	382 (400-1 1/8)
<b>C</b> CIRCLING	1120-1 616 (700-1)	1220-1 716 (800-1)	1380-2 1/2 876 (900-2 1/2)	1640-3 1136 (1200-3)

NE-2, 23 MAR 2023 to 20 APR 2023

NE-2, 23 MAR 2023 to 20 APR 2023