

VOR/DME TTT <b>113.1</b> Chan <b>78</b>	APP CRS <b>356°</b>	Rwy Idg <b>4001</b> TDZE <b>588</b> Apt Elev <b>588</b>
---	------------------------	---

# VOR RWY 36

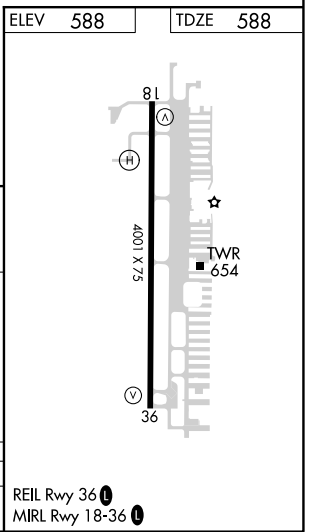
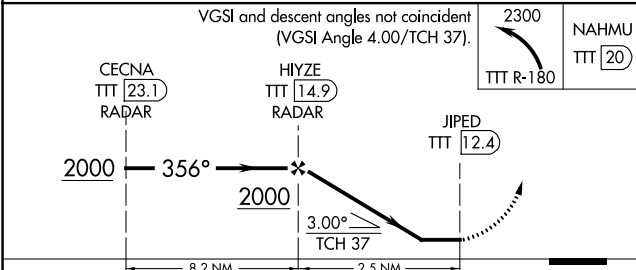
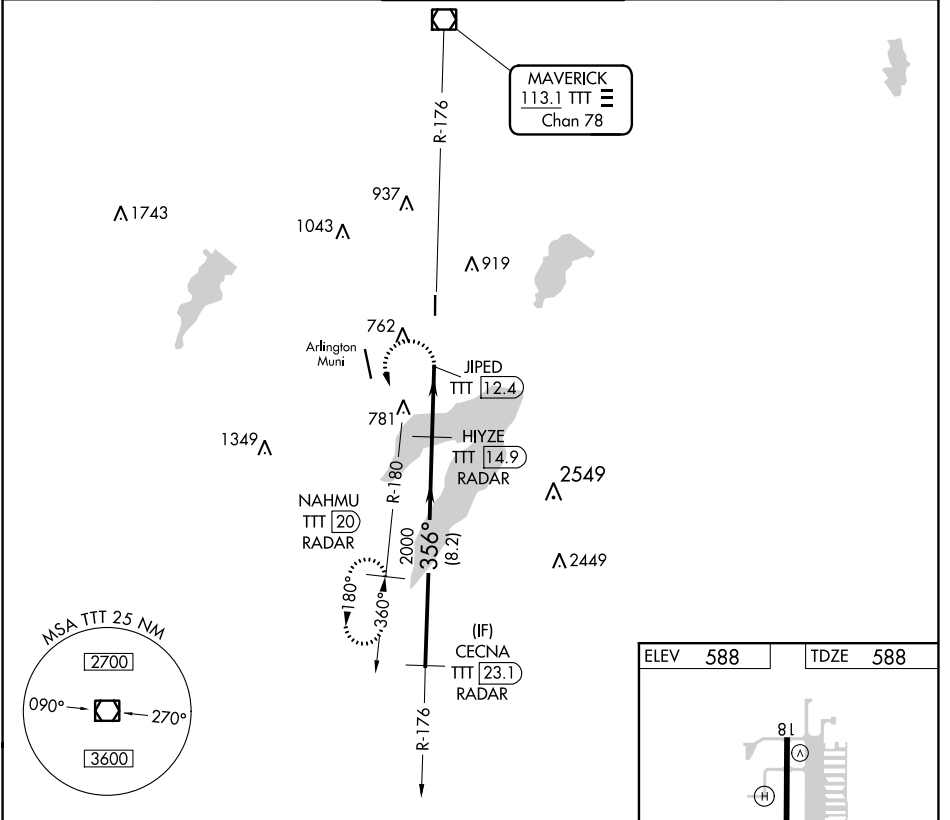
GRAND PRAIRIE MUNI (GPM)

RADAR and DME required.

MAVERICK 113.1 TTT Chan 78

MISSED APPROACH: Climbing left turn to 2300 on TTT R-180 to NAHMU/20 DME/RADAR and hold.

AWOS-3P <b>118.475</b>	REGIONAL APP CON <b>135.975 379.9</b>	GRAND PRAIRIE TOWER* <b>128.55 (CTAF)</b>	GND CON <b>121.15</b>	UNICOM <b>123.075</b>
---------------------------	--	--	--------------------------	--------------------------



CATEGORY	A	B	C	D
S-36	1040-2½	452 (500-2½)	NA	

SC-2, 23 MAR 2023 to 20 APR 2023

SC-2, 23 MAR 2023 to 20 APR 2023