

WAAS Chan 99700 W36A	APP CRS 357°	Rwy ldg 5002 TDZE 86 Aprt Elev 86
--	------------------------	--

RNAV (GPS) RWY 36

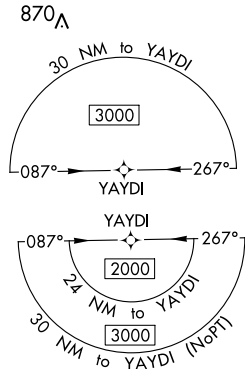
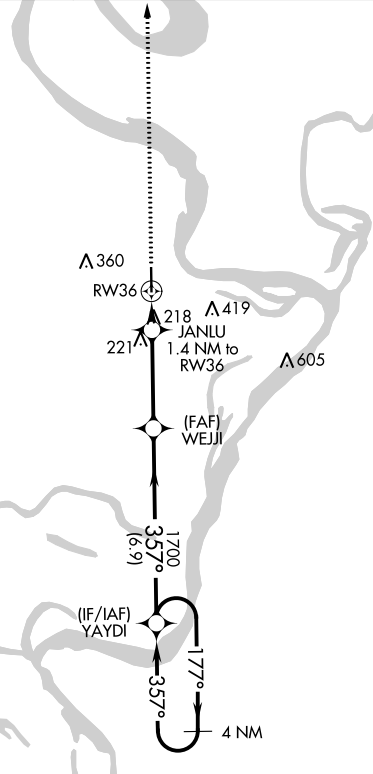
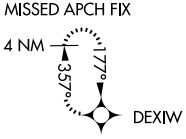
VICKSBURG TALLULAH RGNL (TVR)

⚠ For uncompensated Baro-VNAV systems, LNAV/VNAV NA below -8°C (18°F) or above 54°C (130°F). DME/DME RNP-0.3 NA. When local altimeter setting not received, use Vicksburg Muni, MS altimeter setting and increase LPV DA to 309 feet, LNAV/VNAV DA to 516 feet all visibilities 1/8 mile; increase all MDA 40 feet and visibility Cats C/D 1/4 mile. Baro-VNAV and VDP NA with Vicksburg Muni, MS altimeter setting.



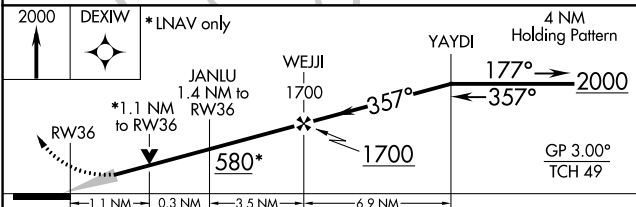
MISSED APPROACH:
Climb to 2000 direct DEXIW and hold.

ASOS 118.525	MEMPHIS CENTER 132.5 259.1	UNICOM 123.0 (CTAF) 0
------------------------	--------------------------------------	---------------------------------

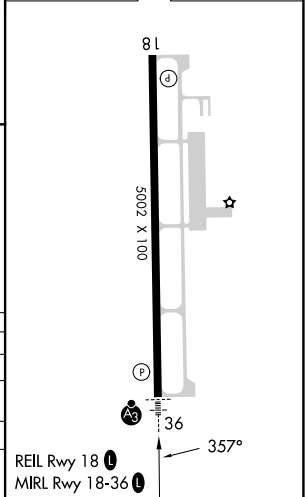


SC-4, 23 MAR 2023 to 20 APR 2023

SC-4, 23 MAR 2023 to 20 APR 2023



ELEV 86	D TDZE 86
---------	------------------



CATEGORY	A	B	C	D
LPV DA		286-1/2	200 (200-1/2)	
LNAV/VNAV DA		493-7/8	407 (500-7/8)	
LNAV MDA	480-1/2	394 (400-1/2)	480-5/8	394 (400-5/8)
C CIRCLING	540-1	454 (500-1)	720-1 3/4 634 (700-1 3/4)	720-2 634 (700-2)

REIL Rwy 18 **0**
MIRL Rwy 18-36 **0**