

WAAS CH 56639 W11A	APP CRS 114°	Rwy ldg 2713 TDZE 15 Apt Elev 15
----------------------------------------	------------------------	-------------------------------------------------------------

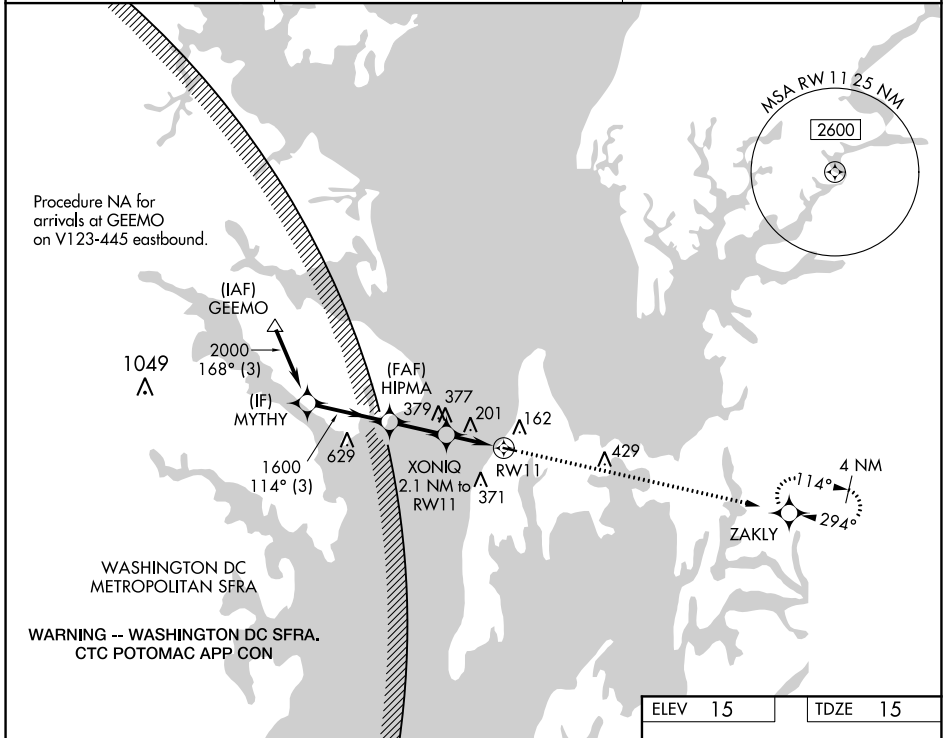
RNAV (GPS) RWY 11

BAY BRIDGE (W29)

RNP APCH. MISSED APPROACH: Climb to 2100 direct ZAKLY and hold.

For uncompensated Baro-VNAV systems, LNAV/VNAV NA below -15°C or above 54°C.

AWOS-3 120.575	POTOMAC APP CON 119.0 282.275	UNICOM 122.725 (CTAF) 0
--------------------------	-----------------------------------------	-----------------------------------



NE-3, 23 MAR 2023 to 20 APR 2023

NE-3, 23 MAR 2023 to 20 APR 2023

ELEV 15	TDZE 15
---------	---------

VGSI and RNAV glidepath not coincident (VGSI Angle 3.00/TCH 39).

MYTHY 2000 114° 1600 1600 XONIQ 2.1 NM to RW11 *1.3 NM to RW11 RW11

GP 3.50° TCH 40

*820

*LNAV only.

2100 ZAKLY

114° 0.3% UP 2713 X 60 29

CATEGORY	A	B	C	D
LPV DA	265-1	250 (300-1)		NA
LNAV/VNAV DA	489-1 3/8	474 (500-1 3/8)		NA
LNAV MDA	460-1	445 (500-1)		NA
CIRCLING	500-1 485 (500-1)	800-1 785 (800-1)		NA

REIL Rwy 11 and 29 0
MIRL Rwy 11-29 0