

WAAS CH 56231 W13A	APP CRS 133°	Rwy Idg 4994 TDZE 582 Apt Elev 588
--	------------------------	---

RNAV (GPS) RWY 13

COURTLAND (9A4)

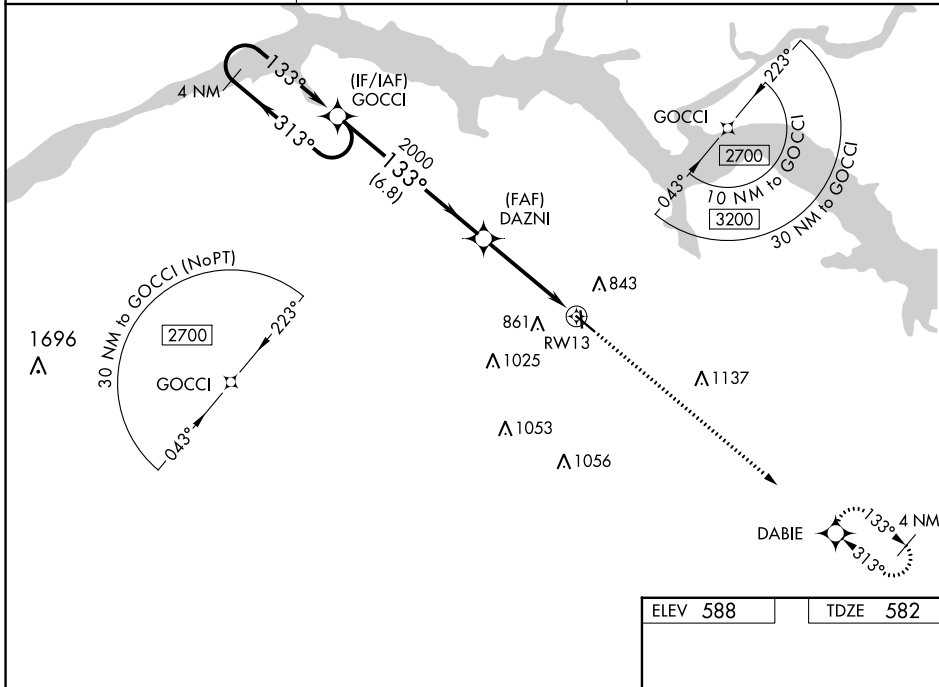
⚠ Baro-VNAV NA when using Muscle Shoals altimeter setting. For uncompensated Baro-VNAV systems, LNAV/VNAV NA below -16°C (4°F) or above 40°C (104°F). DME/DME RNP-0.3 NA. VDP NA when using Muscle Shoals altimeter setting. When local altimeter setting not received, use Muscle Shoals altimeter setting and increase all DAs 38 feet and all MDAs 40 feet, increase LNAV/VNAV all Cats and LNAV Cats C/D visibility 1/8 SM and Circling Cat D 1/4 SM. Night landing: Rwy 18 NA. Helicopter visibility reduction below 3/4 SM NA.

MISSED APPROACH:
Climb to 2700 direct DABIE and hold.

AWOS-3P
118.525

HUNTSVILLE APP CON ★
118.05 239.0

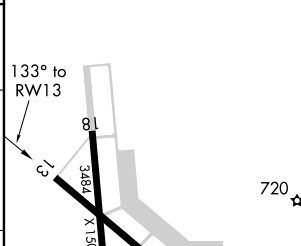
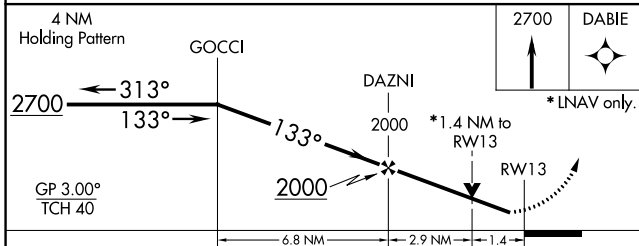
UNICOM
122.7 (CTAF) 0



SE-4, 23 MAR 2023 to 20 APR 2023

SE-4, 23 MAR 2023 to 20 APR 2023

ELEV 588	TDZE 582
----------	----------



CATEGORY	A	B	C	D
LPV DA		782-3/4	200 (200-3/4)	
LNAV/VNAV DA		1074-1 3/4	492 (500-1 3/4)	
LNAV MDA	1080-1	498 (500-1)	1080-1 3/8	498 (500-1 3/8)
CIRCLING	1160-1 572 (600-1)	1240-1 652 (700-1)	1260-2 672 (700-2)	1360-2 1/2 772 (800-2 1/2)

HIRL Rwy 13-31 0
REIL Rws 13 and 31 0