

WAAS CH <b>45940</b> <b>W35A</b>	APP CRS <b>349°</b>	Rwy Idg TDZE Apt Elev	<b>5003</b> <b>14</b> <b>14</b>
--	------------------------	-----------------------------	---------------------------------------

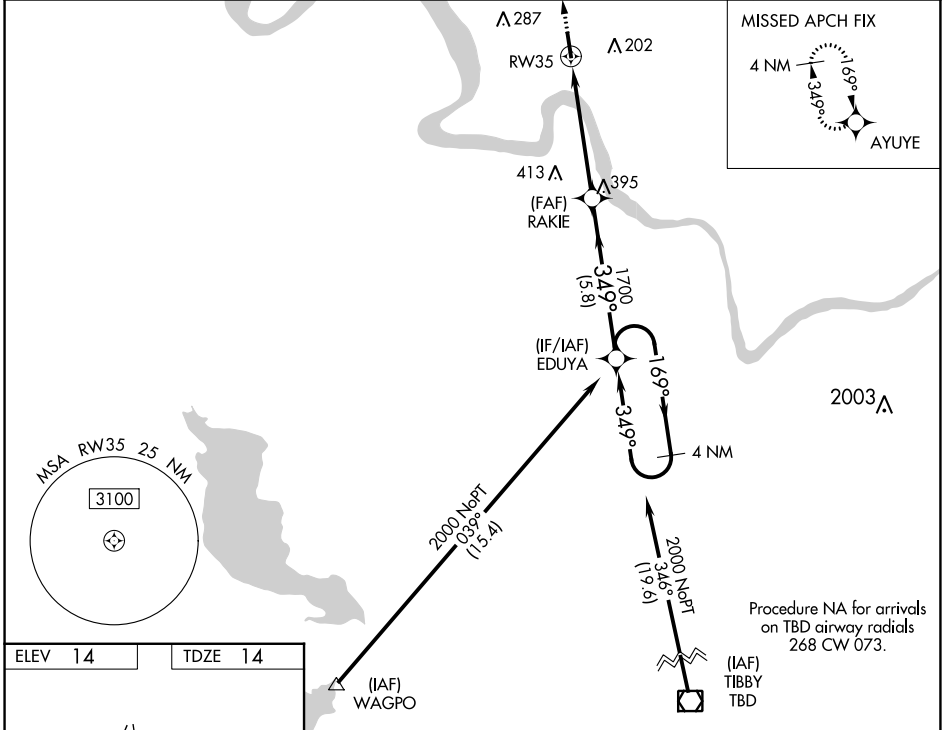
# RNAV (GPS) RWY 35

LOUISIANA RGNL (REG)

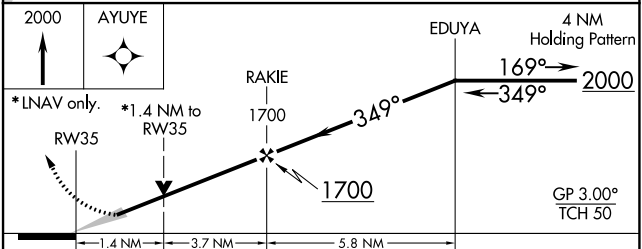
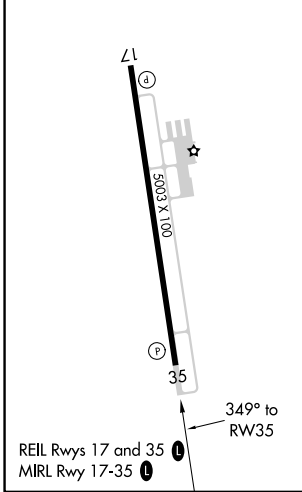
**⚠** For uncompensated Baro-VNAV systems, LNAV/VNAV NA below -15°C (5°F) or above 54°C (130°F). DME/DME RNP-0.3 NA.

MISSED APPROACH: Climb to 2000 direct AYUYE and hold.

REG AWOS-3PT <b>121.175</b>	BTR ASOS <b>125.2</b>	BATON ROUGE APP CON★ <b>133.225 278.3</b>	GCO <b>135.075</b>	UNICOM <b>123.0 (CTAF) 0</b>
--------------------------------	--------------------------	--	-----------------------	---------------------------------



ELEV 14	TDZE 14
---------	---------



CATEGORY	A	B	C	D
LPV DA		264- <sup>3</sup> / <sub>4</sub>	250 (300- <sup>3</sup> / <sub>4</sub> )	
LNAV/VNAV DA		417-1 <sup>3</sup> / <sub>8</sub>	403 (500-1 <sup>3</sup> / <sub>8</sub> )	
LNAV MDA	500-1	486 (500-1)	500-1 <sup>3</sup> / <sub>8</sub>	486 (500-1 <sup>3</sup> / <sub>8</sub> )
<input checked="" type="checkbox"/> CIRCLING	500-1 486 (500-1)	520-1 506 (600-1)	700-2 686 (700-2)	700-2 <sup>1</sup> / <sub>4</sub> 686 (700-2 <sup>1</sup> / <sub>4</sub> )

SC-4, 23 MAR 2023 to 20 APR 2023

SC-4, 23 MAR 2023 to 20 APR 2023