

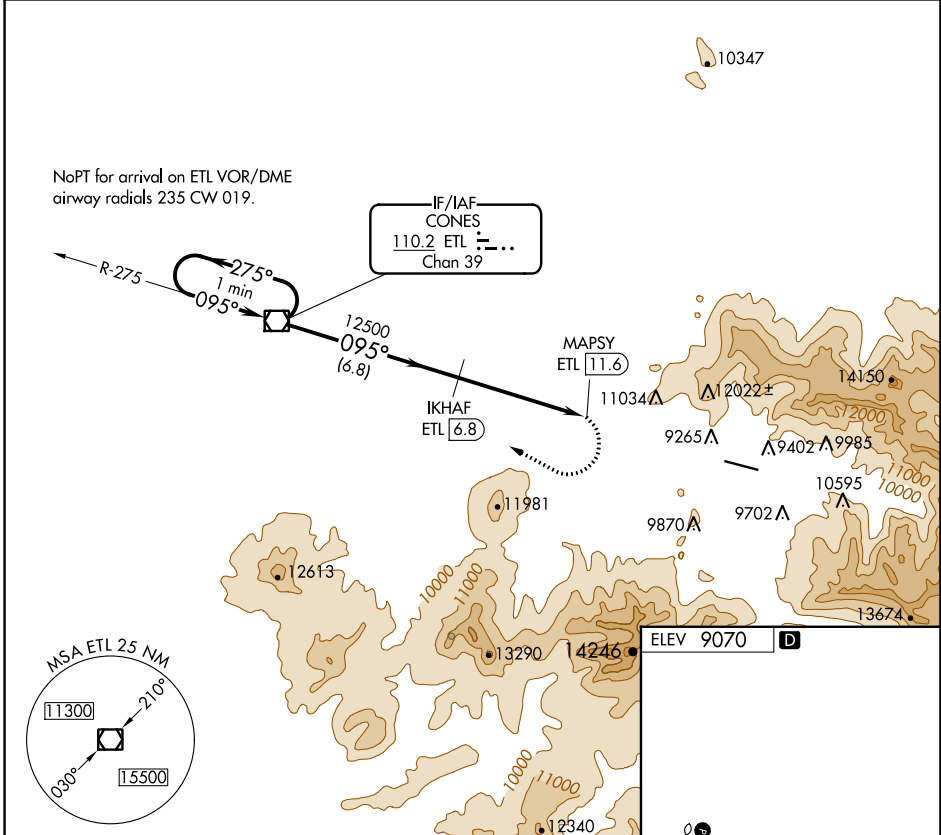
VOR/DME ETL 110.2 Chan 39	APP CRS 095°	Rwy Idg TDZE Apt Elev N/A N/A 9070
---	------------------------	---

VOR/DME-A

TELLURIDE RGNL (TEX)

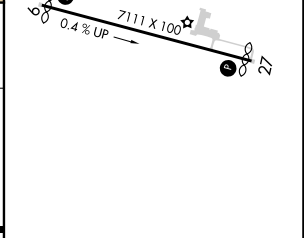
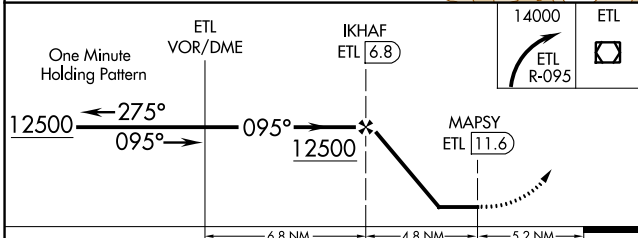
	Circling NA north of Rwy 9-27. Procedure NA at night.	MISSED APPROACH: Immediate climbing right turn to 14000 via ETL VOR/DME R-095 to ETL VOR/DME and hold.
--	--	---

AWOS-3 118.325	DENVER CENTER 125.35 354.05	UNICOM 123.0 (CTAF) 1
--------------------------	---------------------------------------	--



SW-1, 23 MAR 2023 to 20 APR 2023

SW-1, 23 MAR 2023 to 20 APR 2023



CATEGORY	A	B	C	D
C CIRCLING	12420-6	3350 (3400-6)	NA	NA

HIRL Rwy 9-27 **1**
 REIL Rwys 9 and 27 **1**