

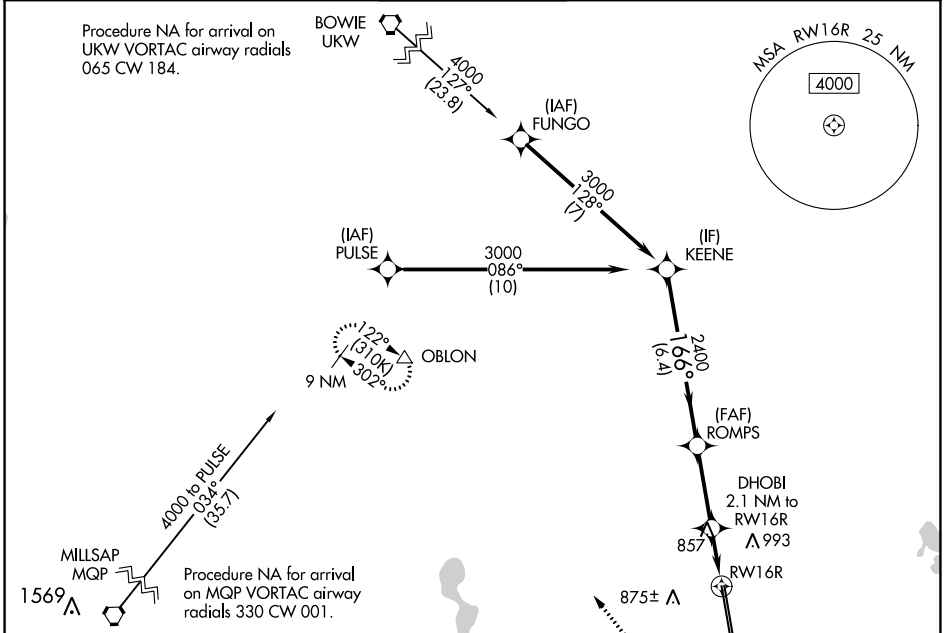
WAAS CH 99338 W16A	APP CRS 166°	Rwy Idg TDZE 721 Apt Elev 723
--	------------------------	---

RNAV (GPS) RWY 16R

PEROT FLD/FORT WORTH ALLIANCE (A.F.W)

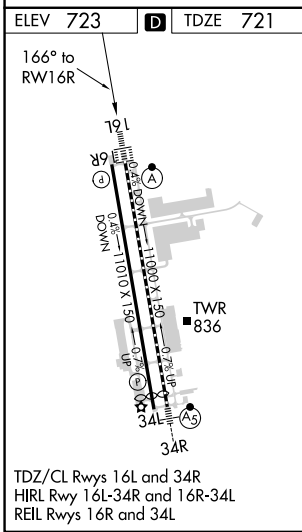
⚠ ⚠	For uncompensated Baro-VNAV systems, LNAV/VNAV NA below -9°C (16°F) or above 54°C (130°F). Circling NA east of Rwy 16L-34R. DME/DME RNP-0.3 NA.	MISSED APPROACH: Climb to 1200 then climbing right turn to 3000 direct OBLON and hold.
----------------------	---	--

ATIS 126.925	REGIONAL APP CON 118.1 306.95	ALLIANCE TOWER 135.15 257.9	GND CON 132.65 306.2	CLNC DEL 128.725
------------------------	---	---------------------------------------	--------------------------------	----------------------------



SC-2, 23 MAR 2023 to 20 APR 2023

SC-2, 23 MAR 2023 to 20 APR 2023



KEENE	VGSI and RNAV glidepath not coincident (VGSI Angle 3.00/TCH 75).				1200	3000	OBLON
	3000	ROMPS	DHOBI	RW16R	*1 NM to RW16R	*LNAV only.	
GP 3.00°	2400	2.1 NM to RW16R					
TCH 55	6.4 NM	3 NM	1.1 NM	1 NM			
CATEGORY	A	B	C	D	E		
LPV DA		921-3/4	200 (200-3/4)				
LNNAV/VNAV DA		1017-7/8	296 (300-7/8)				
LNNAV MDA	1120-1	399 (400-1)	1120-1 1/8	399 (400-1 1/8)			
C CIRCLING	1200-1 477 (500-1)	1320-1 597 (600-1)	1360-1 3/4 637 (700-1 3/4)	1380-2 657 (700-2)	1380-2 1/4 657 (700-2 1/4)		

RNAV (GPS) RWY 16R